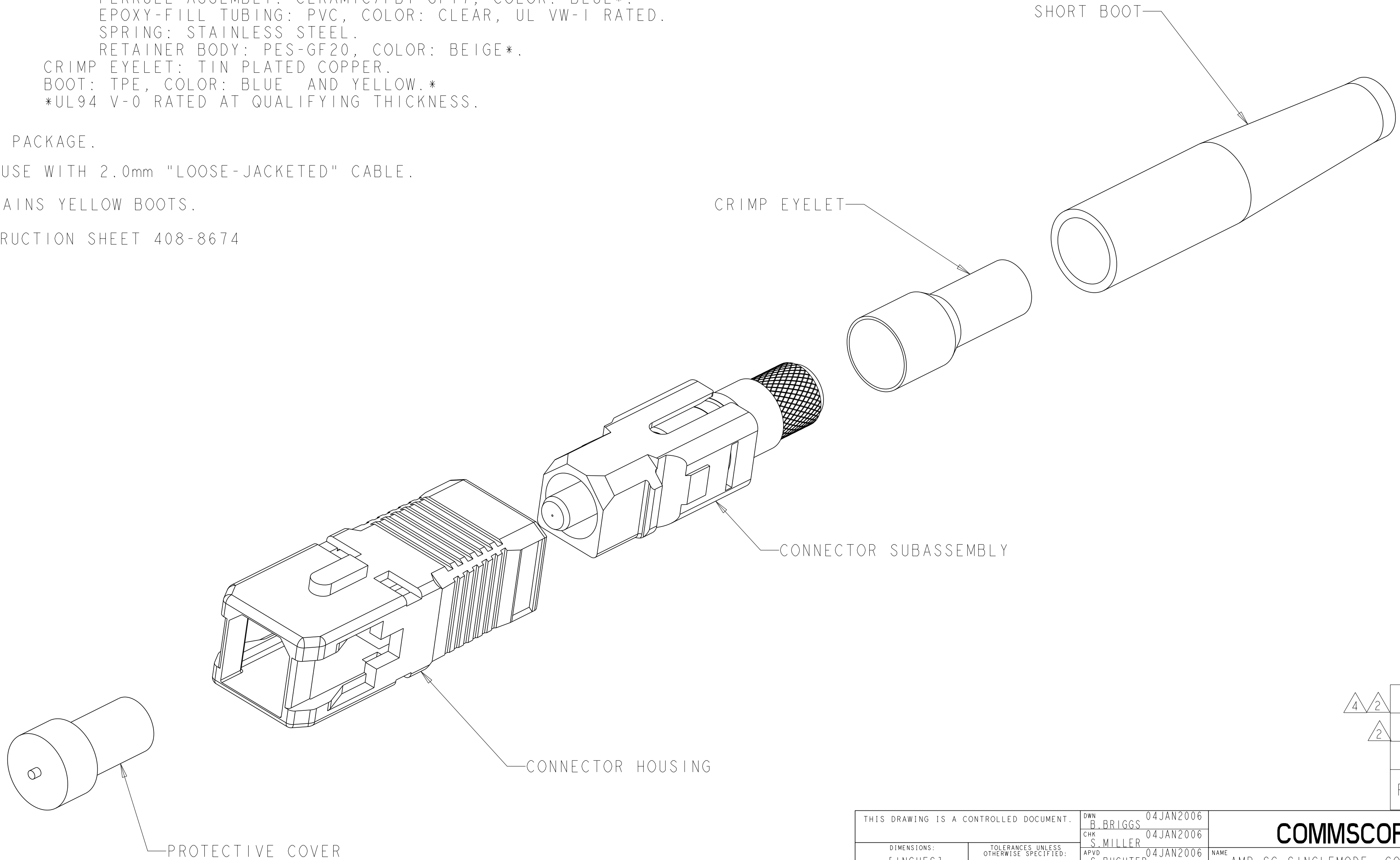


THIS DRAWING IS UNPUBLISHED.      RELEASED FOR PUBLICATION      20  
 © 2016 COMMSCOPE INC. CONFIDENTIAL      NOTICE: THESE DRAWINGS AND SPECIFICATIONS ARE THE PROPRIETARY PROPERTY OF COMMSCOPE, INC. AND MAY BE USED ONLY FOR THE SPECIFIC PURPOSE AUTHORIZED IN WRITING BY COMMSCOPE, INC.

REVISIONS				
P	LTR	DESCRIPTION	DATE	APVD
B		REV; 40033535MCO	28SEP2016	GG TE

**1 MATERIAL:**  
 PROTECTIVE COVER: LDPE, BLACK, NON-FR.  
 CONNECTOR HOUSING: PBT-GF17, COLOR: BLUE\*.  
 CONNECTOR SUBASSEMBLY:  
 PLUG BODY: PES-GF20, COLOR: BEIGE\*.  
 FERRULE ASSEMBLY: CERAMIC/PBT-GF17, COLOR: BLUE\*.  
 EPOXY-FILL TUBING: PVC, COLOR: CLEAR, UL VW-1 RATED.  
 SPRING: STAINLESS STEEL.  
 RETAINER BODY: PES-GF20, COLOR: BEIGE\*.  
 CRIMP EYELET: TIN PLATED COPPER.  
 BOOT: TPE, COLOR: BLUE AND YELLOW.\*  
 \*UL94 V-0 RATED AT QUALIFYING THICKNESS.

- 2 BULK PACKAGE.**  
 3. FOR USE WITH 2.0mm "LOOSE-JACKETED" CABLE.  
**4 CONTAINS YELLOW BOOTS.**  
 5. INSTRUCTION SHEET 408-8674



<b>4/2</b>	5504934-5
<b>2</b>	5504934-3
	5504934-2
	PART NUMBER

THIS DRAWING IS A CONTROLLED DOCUMENT.		DWN B. BRIGGS 04 JAN 2006	<b>COMMSCOPE, INC.</b>	
DIMENSIONS: mm [INCHES]		CHK S. MILLER 04 JAN 2006		
TOLERANCES UNLESS OTHERWISE SPECIFIED:		APVD S. BUCHTER 04 JAN 2006	NAME AMP SC SINGLEMODE, CONNECTOR KIT, ONE PIECE, 2.0mm	
0 PLC ±-		PRODUCT SPEC	-	
1 PLC ±-		APPLICATION SPEC	-	
2 PLC ±-		WEIGHT	-	
3 PLC ±-		CUSTOMER DRAWING	SCALE 5:1 SHEET 1 OF 1 REV B	
4 PLC ±-		FINISH	-	
ANGLES ±-				
MATERIAL				