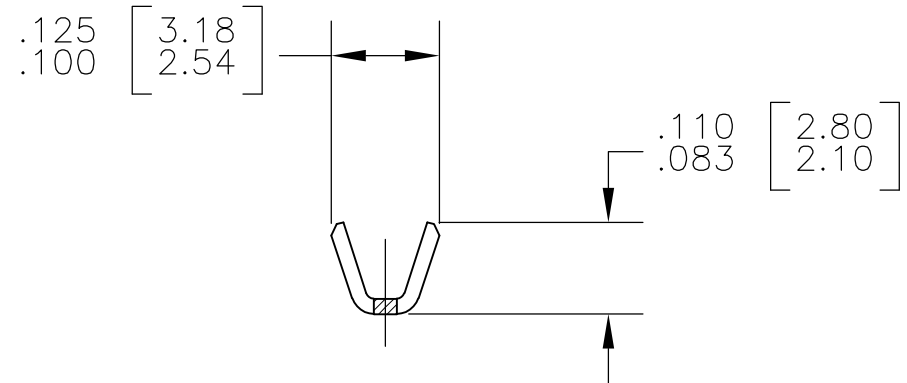
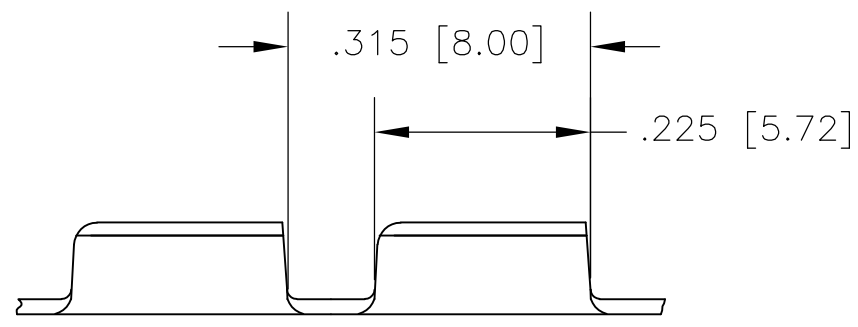
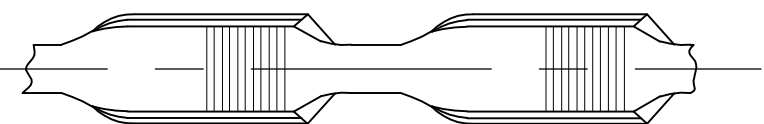



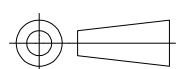
THIS DRAWING IS UNPUBLISHED. RELEASED FOR PUBLICATION JAN ,2016.
 © COPYRIGHT 2015 By TE CONNECTIVITY ALL RIGHTS RESERVED.

REVISIONS					
P	LTR	DESCRIPTION	DATE	DWN	APVD
	A	RELEASED	13JUL2016	PKS	RRP

- 1 PRODUCT SUPPLIED IN STRIP FORM ON REELS
BREAKS MAY BE PRESENT
- 2 DIMENSIONS IN BRACKETS ARE IN MM
- 3 CMA RANGE: 400-1500
- 4 CRIMP WIDTH: .080 F(AMPLIVAR TYPE)
CRIMP HEIGHT ($\pm .002$) = (TOTAL CMA +5320)/139,200
GENERAL APPLICATION GUIDELINES MUST BE FOLLOWED AS SPECIFIED IN CATALOG #
FOR APPLICATOR INFORMATION CALL: 1-800-722-1111
FOR PRODUCT INFORMATION CALL: 1-800-522-6752
- 5 NOT FOR USE WITH COPPER MAGNET WIRE
USE WITH ALUMINUM MAGNET WIRE ONLY IN COMBINATION WITH STRANDED COPPER LEAD WIRE



5	TIN PLATED	.016[0.41] BRASS	2825180-2
No. of Serrations	Finish	Material	Part Number

THIS DRAWING IS A CONTROLLED DOCUMENT.		DWN SENTHIL 28JAN2016	 TE Connectivity FINE MAGWIRE SPLICE MINI MAG-MATE SERRATION				
DIMENSIONS: INCHES		CHK SENTHIL 28JAN2016				NAME	
		APVD RAJENDRA 28JAN2016				PRODUCT SPEC	
TOLERANCES UNLESS OTHERWISE SPECIFIED:		108-64051				APPLICATION SPEC	
MATERIAL SEE TABLE		114-64001	SIZE	CAGE CODE	DRAWING NO		
FINISH SEE TABLE		WEIGHT 0	A3	00779	C-2825180		
CUSTOMER DRAWING			RESTRICTED TO	SCALE 5:1	SHEET 1 OF 1		
				REV A			