

AMPROBE®

HARD AT WORK SINCE 1948.

2014

Product Catalog



Clamp Meters Pg 4

ACD-50NAV	5	RS-1007	7
ACDC-52NAV	5	AC50A	8
ACDC-54NAV	5	LH41A	8
ACD-20SW	6	ACDC-400	8
ACD-23SW	6	ACD-6 PRO	8
ACD-10 PLUS	6	ACDC-100	9
ACD-14 PLUS	6	ACDC-100 TRMS	9
ACD-14 TRMS-PLUS	6	ACD-15 TRMS-PRO	9
ACDC-3400 IND	7	ELS2A	9

Digital Multimeters Pg 11

AM-510	14	HD110C	17
AM-520	14	HD160C	17
AM-530	14	AM-500	18
AM-560	14	DM73C	18
AM-570	14	PM51A	18
37XR-A	16	PM55A	18
38XR-A	16		

Electrical Testers Pg 19

TIC 300 PRO	21	VP-440	25
TIC 410A	21	ST-101B	25
LT-10	22	ST-102B	25
INSP-3	23	PY-1A	26
PRM-4	24	LAN-1	26
MO-100	24		
VP-1000SB	25		

Wire Tracers • Locators Pg 27

AT-3500	28	CT-100	31
AT-4000-A SERIES	29	CT-326-C	31
AT-2000-A SERIES	30	BT-250	31
AT-1000	30		

Insulation • Ground Power Quality Pg 32

AMB-45	34	AMC-3	36
AMB-25	34	AMC-4	36
AMB-50	35	GP-2A	37
AMB-55	35	DGC-1000A	37
AMB-110	35	DM-III MULTITEST	38
AMB-3	36	DM-III MULTITEST F	38
AMC-2	36		

Thermometers Pg 39

IR-700 SERIES	40	TMD-50 SERIES	44
IR-450	42	TMD-50	45
IR608A	42	TMD-53	45
THWD-3	43	TMD-56	45
TH-3	43	TR200-A	46
TH-1	43	TR300	46
THWD-5	43		

Environmental Pg 47

MT-10	48	CO2-100	52
TMA5	48	CO2-200	52
TMA10A	49	TACH-10	53
TMA40-A	49	TACH20	53
TMA-21HW	50	LM-100	53
RLD-1	50	LM-120	53
GSD600	51	LM-200 LED	53
ULD-300	51	SM-10	54
TMULD-300	51	SM-20-A	54
CM-100	52	SM-CAL1	54

Solar • Battery • Components Pg 55

Solar Testers		Component Testers	
SOLAR-100	56	CR50A	58
SOLAR-600	56	LCR55A	58
Battery Testers		Relays	
BAT-200	57	R-115S	58
BAT-500	57	RC-120S	58

Accessories Pg 60

Test Leads	60	Software	62
Carrying Cases	61	Product Index	63
Fuse Directory	62		



No Hassle Warranty - No waiting. No shipping charges.

Our commitment to high-quality products and customer service is demonstrated by our industry exclusive "No Hassle" warranty.

In the unlikely event that an Amprobe Test Tool requires warranty service, any of our local dealers are authorized to replace it, on the spot. (\$500 MSLRP limit)

The product warranty is stated in the user's manual that comes with each product and can be downloaded from www.Amprobe.com

For warranty service, please contact the Amprobe Service Department at 1-877-AMPROBE.



Clamp Meters

Innovation
Amprobe invented the first clamp meter and the innovation has never stopped. The Amprobe Navigator™ Clamp Meter series serves as the first line of defense in any industrial setting. Designed for one-hand operation, our cutting edge navigation system eliminates push buttons with an easy to use joystick allowing you to select functions directly on the large backlit display.

★★★★★
TOP RATED
5 Out of 5 Stars

See The Top Rated Navigator™ Clamp Meter Series, read the five star reviews at www.Amprobe.com.



Clamp Meter Selection Guide

Choose the clamp meter that's right for your job, from basics to industrial.

MODEL:	ACD-50NAV	ACD-51NAV	ACDC-52NAV	ACDC-54NAV	ACD-20SW	ACD-23SW	ACD-10 PLUS	ACD-14 PLUS	ACD-14 TRMS-PLUS	ACDC-3400 IND	RS-1007 PRO	AC50A	LH41A	ACDC-400	ACD-6 PRO	ACDC-100	ACDC-100 TRMS	ACD-15 TRMS PRO	
PG 05	PG 05	PG 05	PG 05	PG 06	PG 06	PG 06	PG 06	PG 06	PG 06	PG 07	PG 07	PG 08	PG 08	PG 08	PG 08	PG 09	PG 09	PG 09	
	Industrial, Power Quality Navigator® Clamps				Swivel™ Clamp Meters		Multimeter Clamps				Large Jaw Industrial	Analog	Leakage Clamps	Basic Clamps				Specialty	
Safety Rating	CAT IV 600 V	CAT IV 600 V	CAT IV 600 V	CAT IV 600 V	CAT III 600 V	CAT III 600 V	CAT III 600 V	CAT III 600 V	CAT III 600 V	CAT IV 600 V	CAT IV 600 V	CAT II 600 V	CAT II 600 V	CAT III 600 V	CAT III 600 V	CAT III 600 V	CAT III 600 V	CAT III 600 V	CAT III 600 V
True-rms	•	•	•	•					•	•								•	•
AC Voltage (V)	1000 V	1000 V	1000 V	1000 V	600 V	600 V	600 V	600 V	600 V	750 V	600 V	600 V		600 V	600 V	600 V	600 V	600 V	600 V
DC Voltage (V)	1000 V	1000 V	1000 V	1000 V	600 V	600 V	600 V	600 V	600 V	1000 V				600 V	600 V	600 V	600 V	600 V	600 V
AC Current (A)	600 A	600 A	600 A	1000 A	400 A	400 A	600 A	600 A	600 A	1000 A	1000 A	60 A	40 A	400 A	1000 A	800 A	800 A	2000 A	
DC Current (A)			600 A	1000 A						1000 A			40 A	400 A		1000 A	1000 A		
Micro Amps									•	•									
Resistance	•	•	•	•	•	•	•	•	•	•	•	•	•	•	•	•	•	•	•
Capacitance	•	•	•	•	•	•	•	•	•	•	•	•	•	•	•	•	•	•	•
Frequency (Test Leads)	•	•	•	•															•
Frequency (Jaw)	•	•	•	•															
Duty Cycle																			•
Relative Zero	•	•	•	•	•	•	•	•	•	•				•	•	•	•	•	•
Temperature	•	•	•	•	•	•	•	•	•										
Diode Test	•	•	•	•	•	•	•	•	•	•	•	•	•	•	•	•	•	•	•
Continuity Beeper	•	•	•	•	•	•	•	•	•	•	•	•	•	•	•	•	•	•	•
Non-Contact Voltage	•	•	•	•	•	•	•	•	•										•
Power (W)	•	•	•	•															
Autoranging	•	•	•	•															
Total Harmonic Distortion (THD)	•	•	•	•															
Phase Rotation Indication	•	•	•	•															
Inrush Current	•	•	•	•															
dBm reading																			
Backlight	•	•	•	•															•
Bar Graph	•	•	•	•															•
Data Hold	•	•	•	•	•	•	•	•	•	•	•	•	•	•	•	•	•	•	•
Peak hold (Crest)	•	•	•	•															•
AutoTest Function (V.A.R)																			•
Auto Power-Off	•	•	•	•	•	•	•	•	•	•	•	•	•	•	•	•	•	•	•
Work light (LED)	•	•	•	•															
MAX	•	•	•	•															
MIN	•	•	•	•															

CAT IV Navigator™ Clamp Meters

See a snapshot of harmonics and power quality measurements to help determine if specialized equipment is needed. Use a wide range of measurement options: min/max, power factor and ac/dc. Make quick, accurate measurements with one hand using the joystick control.

- Fast response
- Inrush current measurement for motors
- Low-pass filter for variable frequency drives
- Phase rotation indication
- VolTect™ non-contact voltage detection
- Continuity beeper
- MAX/MIN and smart data hold
- Peak hold
- Auto flashlight when clamping
- Large backlit display with analog bar graph
- Auto power-off
- Overmold body to absorb shock – drop-proof to 4' (1.2 m)
- True-rms provides accuracy and dependability

FEATURE	ACD-50NAV	ACD-51NAV	ACDC-52NAV	ACDC-54NAV	BEST ACCURACY
AC Current	100.00 A, 600.0 A		100.00 A, 1000.0 A		+/- (1.5% rdg + 5 LSD)
DC Current	-	-	100.00 A, 600.0 A		+/- (1.5% rdg + 5 LSD)
AC Voltage	100.00 V, 1000 V				+/- (1.0% rdg + 5 LSD)
DC Voltage	100.00 V, 1000 V				+/- (0.7% rdg + 2 LSD)
Resistance	1.0000 kΩ, 10.000 kΩ, 100.00 kΩ				+/- (1.0% rdg + 3 LSD)
Frequency	20.0 Hz to 10 kHz				+/- (0.5% rdg + 3 LSD)
Capacitance	4.0000 μF, 4000 μF				+/- (1.9% rdg + 8 LSD)
DCμA	-	1000.0 μA	-	-	+/- (1.7% rdg + 2 LSD)
Temperature	-	-50°F → 1832°F (-50°C → 1000°C)	-	-50°F → 1832°F (-50°C → 1000°C)	+/- (1% rdg + 1°C)
THD (Total Harmonics Distortion)	0.1% → 100.0%				+/- (3.0% rdg + 10 LSD)
Individual Harmonics	1 → 25				-
Power	10 kW → 600 kW		10 kW → 1000 kW		±(A, error×V, reading + V, error×A, reading)
Power Factor	-1.00 → 1.00				+/- 3 degrees
Accommodates Conductors	Up to 1.45" (37 mm) in diameter		Up to 1.60" (40 mm) in diameter		

INCLUDED ACCESSORIES: Test leads, users manual, batteries (installed), thermocouple (ACDC-54NAV only)



ACDC-54NAV

Joystick control detail

★★★★★ TOP RATED

"The ACDC-54NAV is my favorite meter for the job site where ac/dc testing, verification, and troubleshooting are required. This meter is near perfect for the electrician/engineer that regularly works with residential or commercial HVAC, AC Hydraulics, or DC Telco."

- ACDC-54NAV customer reviews



ACD-50NAV ACDC-52NAV ACDC-54NAV

Recommended Accessories

DL248D Deluxe Test Leads Kit (See Page 60)



Navigate Through Any Job

Job Function	Applications	Model
Industrial Electricians and HVAC Technicians	<p>Motor Testing. Use inrush current to test motors capacitance to check start up capacitors and phase rotation to measure three-phase systems</p> <p>Power Quality. Quickly determine the efficiency of an electrical system by measuring power factor and working power measurements. Check for harmful harmonics while you perform daily system checks</p> <p>Transformers. The Navigator™ Clamp is the ideal tool for maintenance and installation of transformers and advanced equipment</p>	ACDC-52NAV ACDC-54NAV
Facilities Maintenance	<p>System Monitoring. Assess and monitor the condition of various systems and advanced equipment such as power quality analyzers</p> <p>Performance Testing. Verify system efficiency and quickly troubleshoot issues to minimize costly downtime by performing load studies, motor testing system checks</p>	ACD-50NAV

Swivel™ Clamp Meters ★★★★★ TOP RATED

Get fast and easy testing for HVAC and electrical applications. See measurements in tight or inconvenient spaces with the patented 180-degree rotating head design of Amprobe's Swivel™ Clamp Meters. The slim jaw puts all features within reach for one-handed operation.

- 180-degree rotating head
- VolTect™ non-contact voltage detection
- Audible continuity
- Auto ranging for quick checks
- Manual ranging for precise measurements
- Data hold

FEATURE	ACD-20SW	ACD-23SW	BEST ACCURACY
True-rms	-	•	-
AC Current	40.00 A, 400.0 A		+/- (2.0% rdg + 10 LSD) 50 Hz → 60 Hz
AC Voltage	4.000 V, 40.00 V, 400.0 V, 600.0 V		+/- (1.2% rdg + 8 LSD) → 50 Hz → 500 Hz at 4 V → 400 V ranges
DC Voltage	400.0 mV, 4.000 V, 40.00 V, 400.0 V, 600.0 V		+/- (0.5% rdg + 2 LSD)
Resistance	400.0 Ω, 4.000 kΩ, 40.00 kΩ, 400.0 kΩ, 4.000 MΩ, 40.00 MΩ		+/- (1.0% rdg + 4 LSD) at 400 Ω → 400 kΩ ranges
Capacitance	-	4.000 μF, 40.00 μF, 400.0 μF, 4.000 μF	+/- (3.0% rdg + 5 LSD) on 40 μF → 400 μF ranges
Temperature	-	-30°F → 400°F, (-35°C → 400°C)	+/- (1.0% + 2°F) 32°F → 400°F +/- (1.0% + 1°C) 0°C → 400°C
Diode Test	•	-	-
VolTect™ non-contact voltage detection	70 V → 600 VAC (50 Hz → 60 Hz)		-
Backlight	-	•	-
Accommodates Conductors	Up to 1.18" (30 mm) in diameter		

INCLUDED ACCESSORIES: Test leads, battery (installed), users manual, carrying case, K-type thermocouple (ACD-23SW only)



180-degree rotating head



ACD-23SW

Recommended Accessories

FOR: ACD-20SW, ACD-23SW, ACD-10 PLUS, ACD-14PLUS and ACD-14 TRMS-PLUS

- DL248D** Deluxe Test Leads Kit (See Page 60)
- ELS2A** AC Line Splitter (See Page 60)



ACD-10 PLUS Clamp Multimeter with Uniquely Thin Jaws

With thinner jaws than standard clamp multimeters, only 0.4"/10 mm thick, the ACD-10 PLUS, and ACD-14 PLUS, allow access to tight measurement areas and still accommodate conductors up to 1"/25 mm.

ACD-14 PLUS and ACD-14 TRMS-PLUS Dual Display Digital Clamp Multimeters

The professional's choice for both HVAC and electrical applications with a complete set of measurement features including dual displays that allow you to view amperage and voltage measurements simultaneously.

- Continuity buzzer
- Hold and maximum reading functions
- Auto ranging
- Auto power off and low battery indication
- Rubber over-molded case
- Frequency is measured by either jaws or test leads (ACD-10 PLUS only)
- Microamps for testing flame sensors (ACD-14 PLUS only)
- Diode test (ACD-14 PLUS and ACD-14 TRMS-PLUS only)
- True-rms for more accurate readings in noisy environments (ACD-14 TRMS-PLUS only)

FEATURES	ACD-10 PLUS	ACD-14 PLUS	ACD-14 TRMS-PLUS
True-rms	-	-	•
AC Voltage	4.000 V, 40.00 V, 400.0 V, 600 V		
DC Voltage	400.0 mV, 4.000 V, 40.00 V, 400.0 V, 600 V		
AC Current	40.00 A, 400.0 A, 600 A		
Resistance	400.0 Ω, 4.000 kΩ, 40.00 kΩ, 400.0 kΩ, 4.000 MΩ, 40.00 MΩ		
Capacitance	500.0 nF, 5.000 μF, 50.00 μF, 500.0 μF, 3000 μF		
Frequency	40 Hz → 400 Hz with Jaw, 10 Hz → 100 kHz with test leads		
Temperature	-	-4°F → 999°F (-20°C → 537°C)	
Dual Displays	-	•	•
Micro Amps	-	•	•
Accommodates Conductors	up to 1.0" (25 mm) in diameter		

INCLUDED ACCESSORIES: Test leads, battery (installed), soft carrying pouch, K-type thermocouple with banana plug (ACD-14 PLUS and ACD-14 TRMS-PLUS only), users manual



ACD-10 PLUS

ACD-14 TRMS-PLUS

ACDC-3400 IND CAT IV Clamp Meter

If an industrial or utility testing application demands a higher level of safety, reach for this CAT IV rated Clamp Meter.

- Extra large jaws accommodate wide wires
- Peak hold
- Audible continuity
- Auto and manual ranging
- Auto power-off
- Data hold
- Backlight
- Diode test
- True-rms for accuracy and dependability
- MAX/MIN recording

FEATURE	ACDC-3400 IND
DC Voltage	660.0 mV, 6.600 V, 66.00 V, 660.0 V, 1000 V
AC Voltage	660.0 mV, 6.600 V, 66.00 V, 660.0 V, 750 V
AC Current	66.00 A, 660.0 A, 1000 A
DC Current	660.0 A, 1000 A
Resistance	660.0 Ω, 6.600 kΩ, 66.00 kΩ, 660.0 kΩ, 6.600 MΩ, 66.00 MΩ
Capacitance	6.600 nF, 66.00 nF, 660.0 nF, 6.600 μF, 66.00 μF, 660.0 μF, 6.6 mF
Frequency	66.00 Hz, 660.0 Hz, 6.600 kHz, 66.00 kHz, 660.0 kHz, 1.000 MHz
Continuity	•
Accommodates Conductors	Up to 2.0" (51 mm) in diameter

INCLUDED ACCESSORIES: Deluxe carrying case, test leads, test leads, battery (installed), users manual.



★★★★★
Rated 4.3 Out of 5 Stars



ACDC-3400 IND

★★★★★
TOP RATED
"Top quality product
Fast, accurate and simple
to use."

- ACDC-3400 IND
customer review

Recommended Accessories

FOR: ACDC-3400 and RS-1007 PRO

- DL248D** Deluxe Test Leads Kit (See Page 60)



RS-1007 PRO CAT IV Analog Clamp Meter

Take these clamp meters to extremes. Digital clamp meters have LCD screens that tend to freeze below 32°F (0°C), but the Amprobe analog clamp meters can take extreme heat or cold and keep on measuring amps and volts without problems or batteries.

- Easy-to-read rotary scale
- Works in temperatures from 5°F to 122°F
- Does not need batteries to measure volts or amps
- Operates on 50Hz and 60Hz frequencies
- Pointer lock - data hold

FEATURE	RS-1007 PRO
AC Voltage	150 V, 300 V, 600 V
AC Current	15 A, 40 A, 100 A, 300 A, 1000 A
Resistance	1000 Ω
Continuity	•
Accommodates Conductors	up to 1.88" (47 mm) in diameter

INCLUDED ACCESSORIES: Test leads, battery (installed, for resistance measurement only), users manual, carrying case



RS-1007 PRO

AC50A Leakage Current Clamp Multimeter

Great for applications requiring measurement of leakage and fault currents, this clamp measures low AC current down to microamps.

- Min/max control to see largest/smallest values in a series of measurements
- Relative value measurement to determine differentials
- Data hold to freeze measurement value on the display
- Digital display with analog bargraph
- Auto power-off to save battery life
- Minimum resolution 0.01 mA

LH41A AC/DC Low Current Clamp Meter

Take precise low-current measurements with 1 mA resolution.

- Data hold
- Auto power-off
- Auto zero button to zero display for DC

FEATURE	AC50A	LH41A
AC Voltage	400.0 V	-
AC Current	40.00 mA, 400.0 mA, 4.000 A, 40.00 A, 60.0 A	4.000 A, 40.00 A
DC Current	-	4.000 A, 40.00 A
Resistance	400 Ω	-
Continuity	•	-
Accommodates Conductors	up to 1.2" (30 mm) in diameter	up to 0.78" (20 mm) in diameter

INCLUDED ACCESSORIES: Batteries (installed), users manual, test leads (AC50A only), carrying case (AC50A only)



AC50A



LH41A

ACDC-400 Digital Clamp Multimeter

The ACDC-400 is a full-featured clamp suitable for facility maintenance to field service with wide measurement capabilities.

- 10 mA resolution in the 40 A range
- 4000-count, easy-to-read display
- Analog bar graph
- Autoranging
- Data hold
- Auto power-off
- MAX/MIN recording

FEATURE	ACDC-400
AC Voltage	400.0 mV, 4.000 V, 40.00 V, 400.0 V, 600 V
DC Voltage	400.0 mV, 4.000 V, 40.00 V, 400.0 V, 600 V
AC Current	40.00 A, 400.0 A
DC Current	400 A
Resistance	400.0 Ω, 4.000 kΩ, 40.00 kΩ, 400.0 kΩ, 4.000 MΩ, 40.00 MΩ
Accommodates Conductors	up to 1.18" (30 mm) in diameter

INCLUDED ACCESSORIES: Users manual, carrying case, batteries (installed), test leads



ACDC-400



ACD-6 PRO

ACD-6 PRO Digital Clamp Meter

This high-current clamp doubles as a multimeter for AC and DC voltage, resistance and continuity.

- Auto and manual ranging
- Relative zero mode
- Auto power-off
- Data hold
- Diode test
- Audible continuity

MEASUREMENTS	ACD-6 PRO	BEST ACCURACY
DC Voltage	400.0 mV, 4.000 V, 40.00 V, 400.0 V, 600 V	1.0% + 3 LSD
AC Voltage	600 V	2.0% + 5 LSD
AC Current	400.0 A, 1000 A	1.5% + 5 LSD
Resistance	400.0 Ω, 4.000 kΩ, 40.00 kΩ, 400.0 kΩ, 4.000 MΩ, 40.00 MΩ	1.0% + 4 LSD
Accommodates Conductors	up to 1.77" (45 mm) in diameter	-

INCLUDED ACCESSORIES: Carrying case, batteries (installed), users manual



Recommended Accessories

FOR: ACDC-400 and ACD-6

DL248D
Deluxe Test Leads Kit
(See Page 60)

ELS2A
AC Line Splitter
(See Page 60)



ACDC-100 and ACDC-100 TRMS Digital Clamp Meters

Accuracy, quality, and proven technology meet in the ACDC-100 and ACDC-100 TRMS offering superior ac/dc measurement capabilities, highest product quality and enhanced ergonomic design.

- Relative zero mode
- Auto power-off
- Data hold
- MAX capture function for inrush current measurements (30 mS response)
- Diode test
- Audible continuity
- "Third hand" test probe holder
- Rubber over-molded case with built-in probes storage
- True-rms and backlight (ACDC-100 TRMS only)

FEATURE	ACDC-100	ACDC-100 TRMS
True-rms	-	•
AC Current	400.0 A, 800 A	
DC Current	400.0 A, 1000 A	
Voltage AC/DC	400.0 mV, 4.000 V, 40.00 V, 400.0 V, 600 V	
Resistance	400.0 Ω, 4.000 kΩ, 40.00 kΩ, 400.0 kΩ, 4.000 MΩ, 40.00 MΩ	
Continuity	•	
Capacitance	500.0 nF, 5.000 μF, 50.00 μF, 500.0 μF, 3000 μF	
Accommodates Conductors	up to 2.0" (50 mm) in diameter	

INCLUDED ACCESSORIES: Deluxe carrying case, test leads, batteries (installed), users manual



ACDC-100

Recommended Accessories

FOR: ACDC-100, ACDC-100 TRMS and ACD-15 TRMS-PRO

DL248D
Deluxe Test Leads Kit
(See Page 60)

ELS2A
AC Line Splitter
(See Page 60)



ACD-15 TRMS-PRO Clamp Multimeter

This professional meter improves measurement performance and reliability.

- Voltect™ non-contact voltage level detection
- Diode test
- Auto-check feature automatically selects dc V, ac V or resistance
- Auto and manual ranging
- Auto power-off
- Low battery indication
- Data hold
- Backlight
- True-rms provides accuracy and dependability

FEATURE	ACD-15 TRMS-PRO
True-rms	•
AC Current	400.0 A, 2000 A
Voltage AC/DC	6.000 V, 60.00 V, 600.0 V
Resistance	6.000 kΩ, 60.00 kΩ, 600.0 kΩ, 6.000 MΩ
Continuity	•
Frequency	10 Hz → 30 kHz
Capacitance	100.0 nF, 1000 nF, 10.00 μF, 100.0 μF, 2000 μF
Voltect™ Non-contact Voltage	•
Accommodates Conductors	up to 1.77" (45 mm) in diameter

INCLUDED ACCESSORIES: Deluxe carrying case, test leads, batteries (installed), users manual



ACD-15 TRMS-PRO

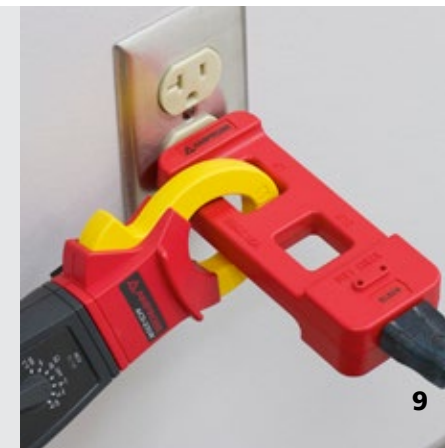
ELS2A AC Line Splitter

Measure the current on a 2-wire or 3-wire power cord up to 15 A without having to cut off the plug and separate the conductors, or open electrical boxes on 120 V lines. Use with any Amprobe clamp meter.

- Two measurement loops, 1X and 10X for increased sensitivity
- Built-in voltage measurement jacks to check for voltage sags and surges
- Rated for 120 V, 15 Amps



ELS2A



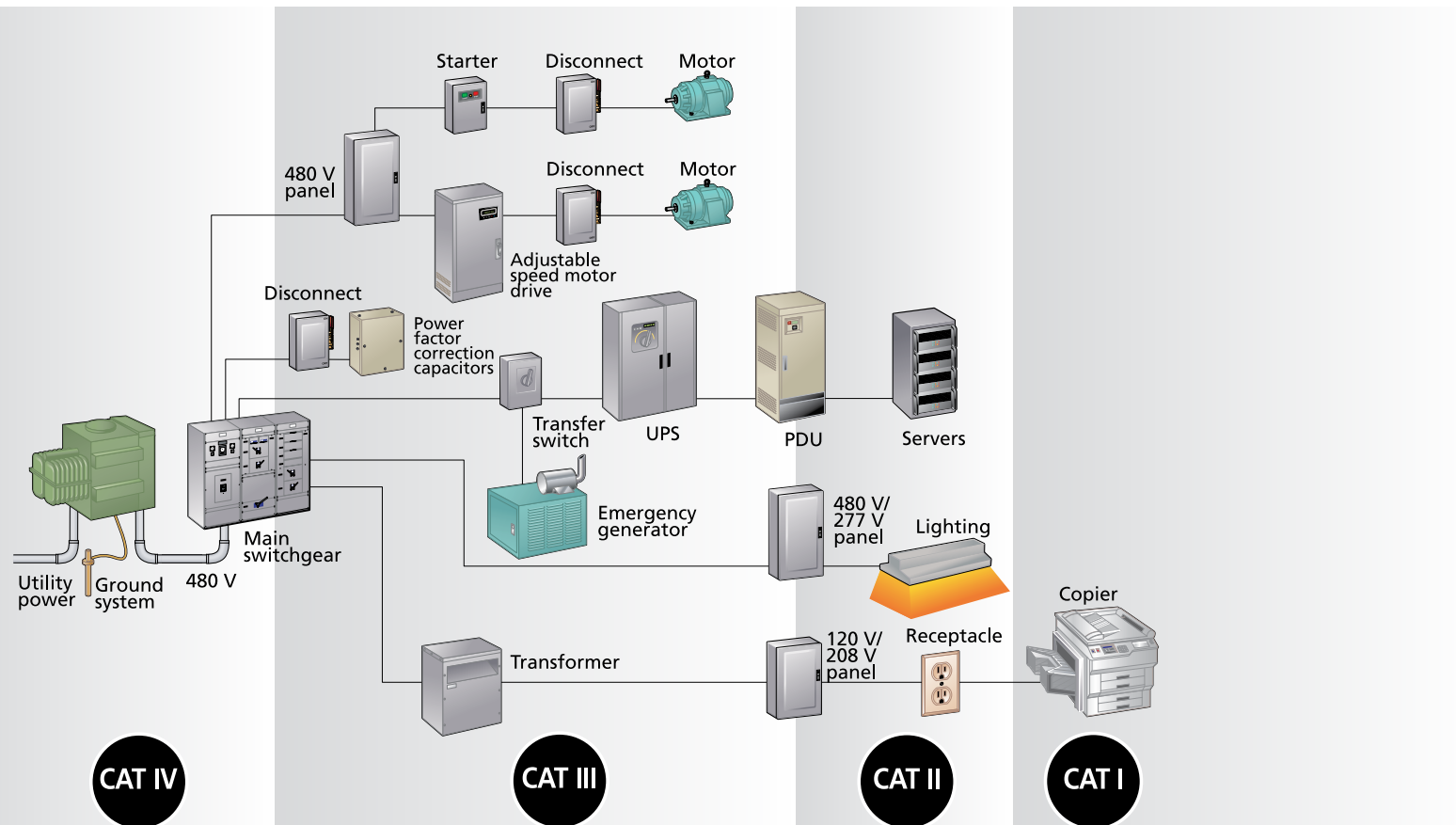
For ordering information see page 63. For detailed specifications go to www.Amprobe.com

Safety Reference Guide

International safety standards

Test equipment must be designed to protect people who work in the high-voltage, high-current environments. In order to prevent injury, the International Electrotechnical Commission (IEC) develops international general standards for safety of electrical equipment for measurement, control and laboratory use. The most current standard 61010 specifies overvoltage categories for electrical distribution systems. The category rating increases based on the closeness to the power source and a higher level of user protection that is required from test equipment.

Proposed Energy Regions*



CAT IV

CAT IV
Three-phase at utility connection, electricity meters, outside and service entrance

CAT III

CAT III
Three-phase distribution, large building lighting systems, distribution panel devices

CAT II

CAT II
Appliances, portable tools

CAT I

CAT I
Electronics, signal level single-phase receptacle loads

* Category ratings per IEC 61010-1
Category boundaries may not be exact

Digital Multimeters

Choice

Part of a great value is getting exactly what you need in a tool – nothing more or less. With the Amprobe broad selection of digital multimeters, you can find the perfect match for any job. From the industrial meters safety-rated for CAT IV electrical environments, to simple pocket-sized meters, you'll find a digital multimeter that fits your needs.



TOP RATED
5 Out of 5 Stars

See The Top Rated AM-500 Series Digital Multimeters



Digital Multimeter Selection Guide

Rugged, high performance multimeters for troubleshooting any application

MODEL:	AM-510	AM-520	AM-530	AM-560	AM-570	37XR-A	38XR-A	HD-110C	HD-160C	AM-500	DM73C	PM51A	PM55A
	PG 14	PG 14	PG 14	PG 14	PG 14	PG 16	PG 16	PG 17	PG 17	PG 18	PG 18	PG 18	PG 18
	Professional Autoranging Digital Multimeters					XR Full-Size Digital Multimeter		Heavy Duty Digital Multimeters		Autoranging Digital	Pen-style Digital	Pocket Digital Multimeters	
Safety Rating	CAT III 600 V	CAT III 600 V	CAT III 600 V	CAT IV 600 V	CAT IV 600 V	CAT III 600 V	CAT IV 600 V	CAT IV 1000 V	CAT IV 1000 V	CAT III 600 V	CAT II 600 V	CAT II 600 V	CAT II 600 V
True-rms			•		•	•	•	•					
AC Voltage (V)	600 V	600 V	600 V	1000 V	1000 V	1000 V	1000 V	1000 V	1000 V	600 V	600 V	600 V	600 V
DC Voltage (V)	600 V	600 V	600 V	1000 V	1000 V	1000 V	1000 V	1500 V	1500 V	600 V	600 V	600 V	600 V
AC Current (A)	10 A	10 A	10 A	10 A	10 A	10 A	10 A	2 A	2 A	10 A	2000 µA		2000 µA
DC Current (A)	10 A	10 A	10 A	10 A	10 A	10 A	10 A	2 A	2 A	10 A	2000 µA		2000 µA
Micro Amps	•	•	•	•	•	•	•	•		•	•		•
Resistance	•	•	•	•	•	•	•	•	•	•	•	•	•
Capacitance	•	•	•	•	•	•	•	•	•		•	•	•
Inductance						•							
Frequency	•	•	•	•	•	•	•	•	•		•	•	•
Duty Cycle	•			•	•	•	•	•	•				
Relative Zero	•	•	•	•	•	•	•	•	•				
Temperature Inputs		1	1	2	2		1	1					
Diode Test	•	•	•	•	•	•	•	•	•	•	•	•	•
Continuity Beeper	•	•	•	•	•	•	•	•	•	•	•	•	•
Non-contact Voltage	•	•	•	•	•						•		•
Logic Test						•							
Autoranging	•	•	•	•	•	•	•	•	•	•	•	•	•
Battery Test	•									•			
DC Loop Current 4-20m A								•	•				
dBm Reading						•	•	•					
Backlight	•	•	•	•	•	•	•	•	•				
Bar Graph		•	•	•	•	•	•	•	•				
Data Hold	•	•	•	•	•	•	•	•	•	•	•	•	•
Peak Hold (Crest)				•	•	•	•	•	•				
AutoTest Function (V,A,R)											•		•
Data Logging								•					
PC Interface Capabilities								•					
Auto Power Off	•	•	•	•	•	•	•	•	•	•	•	•	•
Work Light (LED)	•	•	•	•	•	•	•	•	•	•	•	•	•
Low Pass Filter				•	•								
Low Z					•								

Stray Voltage and What to Do About It.

Solve stray voltage problems with the Amprobe True-rms AM-570

The most common place to encounter stray voltage is in unused cable runs or electrical wiring in existing conduit. When buildings are built and wired, electricians often pull extra wire through and leave it unconnected for future use.

For most electrical measurements, a high impedance multimeter is best, since you don't want the meter loading the circuit and affecting the circuit measurements. When dealing with the capacitive coupling, however, a high impedance meter between ground or neutral to the unconnected cable or open connection will indicate some amount of voltage present. This measured voltage reading may be as high as 50% of the energized voltage in the same proximity.

Is this voltage real? Yes, but it's a static voltage, containing no real energy or current flow. Yet this stray voltage reading presents a real source of confusion. Is the connection hot or not? The AM-570 Industrial Digital Multimeter solves this problem. Designed with a high impedance (low Z) function, the AM-570 provides a low impedance load to the measured circuit, desensitizing the meter to low energy and spurious sources of interference. If the measurement points are energized with a "hard" voltage, the meter will simply display the voltage reading. If the measurement points contain a stray or ghost voltage, the meter will read very close to zero volts, indicating the circuit or connection is not energized.

The True-rms AM-570 also includes Voltect™ non-contact voltage detection and dual thermocouples for measuring the high and low side of an AC system which calculates temperature differential effortlessly.



AM-570

★★★★★ **TOP RATED**

"The features measure up to a lot of other industrial meters with big, well-known names, and yet there is more here than many of them - like dual temperature probes, non-contact voltage detection, and frequency/duty measurement. One of the best features is the LCD backlight - it is very bright and uniform throughout the display, and brighter than several meters costing 4 to 5 times as much."

- AM-570 customer review



AM-500 Series Digital Multimeters

Best-in-class autoranging, digital multimeters with features for residential, commercial electrical, industrial and HVAC applications. Features include True-rms, dual thermocouples for measuring temperature differential, low impedance to detect stray voltage, low pass filter to accurately measure variable frequency drives and a built-in flashlight.

- Five autoranging multimeters safety rated up to CAT IV 600 V
- True-rms
- VoltTect™ non-contact voltage detection verifies voltage presence
- Measure differential temperature easily with dual thermocouples
- Detect stray voltages with low impedance and low-pass filters
- Easily operate with large backlit LCD display, built-in flashlight and rubber tilt stand

AM-570

Recommended Accessories

- DL248D**
Deluxe Test Leads Kit (See Page 60)
- TPK-62**
Temperature Adapter and 2 Thermocouples for AM-560 and AM-570 (Replacement part)
- TPK-59**
Thermocouple (for AM-520 and AM-530)



Series Selection Guide		AM-510	AM-520	AM-530	AM-560	AM-570
Application:	Feature:	Com / Res	HVAC	Electrical	Adv. HVAC	Industrial
Safety Rating	Safety	CAT III 600 V	CAT III 600 V	CAT III 600 V	CAT IV 600 V CAT III 1000 V	CAT IV 600 V CAT III 1000 V
Measure voltage in noisy environments	True-rms			•		•
Electrical panels, AC outlets	AC Voltage (V)	600 V	600 V	600 V	1000 V	1000 V
DC systems, auto/marine batteries	DC Voltage (V)	600 V	600 V	600 V	1000 V	1000 V
AC Current - electrical panels, appliances	AC Current (A)	10 A	10 A	10 A	10 A	10 A
DC Current - electronics, DC motors	DC Current (A)	10 A	10 A	10 A	10 A	10 A
Specified resistance and continuity	Resistance (MOhms)	40 MΩ	40 MΩ	40 MΩ	60 MΩ	60 MΩ
Flame sensors	Microamps	•	•	•	•	•
Diodes in AC to DC converters	Diode test	•	•	•	•	•
Fuses, light bulbs, wire connections	Continuity	•	•	•	•	•
Household batteries	Battery test	•	-	-	-	-
Motor startup or run capacitors	Capacitance	•	•	•	•	•
Frequency verification	Frequency	•	•	•	•	•
Non-contact voltage detection	VoltTect™	•	•	•	•	•
Electrical load-time on vs time off	Duty cycle	•	•	•	•	•
Temp of air vents, fuses, transformers	Temperature inputs	-	1	1	2	2
Automatically selects measurement range	Autoranging	•	•	•	•	•
Manually select measurement range	Manual ranging	•	•	•	•	•
Voltage on variable frequency drives	Low pass filter	-	-	-	•	•
Detect stray voltages	Low Z	-	-	-	-	•
Dimly lit areas	Built-in flashlight	•	•	•	•	•
Meter resolution	LCD counts	4,000	4,000	4,000	6,000	6,000
Dimly lit areas	Backlight	•	•	•	•	•
Monitoring fast changing signals	Bar graph	-	•	•	•	•
Two relative measurements on one screen	Dual display	-	-	-	•	•
Data memory	Data hold	•	•	•	•	•
Difference between two measurements	Relative reading	•	•	•	•	•
Max/min peak measurement	Max/min hold	-	•	•	•	•
Specialized signal measurements	Peak hold (crest)	-	-	-	•	•

INCLUDED ACCESSORIES FOR ALL AM-500 SERIES MULTIMETERS:
Test leads (pair), K-type thermocouple (AM-520, AM-530, AM-560 and AM-570 only), batteries (installed), carrying case, users manual, Temperature adaptor (AM-560 and AM-570 only)



AM-510 Commercial/Residential Multimeter

Designed for light commercial and advanced residential applications, the AM-510 enables you to re-wire an electrical panel, install light fixtures, troubleshoot home appliances, electrical sockets and automotive electrical issues.

- Voltage up to 600 V ac/dc, ac/dc current and resistance
- Frequency, capacitance, duty cycle
- VoltTect™ non-contact voltage detection
- Audible continuity, diode test, backlit LCD display, data hold and relative zero mode

AM-510



AM-520 HVAC Multimeter

Designed for HVAC professionals, quickly measure temperature, micro amps and capacitance. The AM-520 measures a complete range of electrical parameters and features VoltTect™ non-contact voltage detection.

- Voltage up to 600 V ac/dc, ac/dc current and resistance
- Frequency, capacitance, duty cycle for troubleshooting applications
- VoltTect™ non-contact voltage detection
- Audible continuity, diode test, backlit LCD display, data hold, relative zero mode

Replacement part: TPK-59

AM-520



AM-530 True-rms Electrical Contractor Multimeter

Quickly troubleshoot voltage, perform repairs, run new wiring, check continuity on electrical connections, identify blown fuses, check motors or check transformers. The AM-530 is the perfect multimeter for the professional electrician.

- Voltage up to 600 V ac/dc, ac/dc current, resistance, frequency, capacitance, and temperature.
- True-rms
- VoltTect™ non-contact voltage detection
- Audible continuity, diode test, backlit LCD display, data hold, relative zero mode

Replacement part: TPK-59

AM-530



AM-560 Advanced HVAC Multimeter

Measure a complete range of electrical parameters for HVAC applications with dual thermocouples for taking differential temperature measurements, low pass filter for variable frequency drives and capacitance. It features micro amps for flame sensor troubleshooting. The AM-560 is the choice multimeter for a professional HVAC technician.

- AC/DC Voltage up to 1000 V, ac/dc current, resistance, frequency, capacitance, temperature, duty cycle.
- Dual thermocouple for simultaneous temperature measurements on low/high side of HVAC systems
- Low pass filter for variable frequency drives
- VoltTect™ non-contact voltage detection
- Audible continuity, diode test, backlit LCD display, data hold, relative zero mode

Replacement part: TPK-62

AM-560



AM-570 Industrial Multimeter

For professional electricians who need to maintain service or troubleshoot advanced electrical systems, the AM-570 is packed full of features such as true-rms, dual thermocouples, a low impedance mode, and a low pass filter to accurately take measurements on variable frequency drives.

- AC/DC Voltage up to 1000 V, ac/dc current, resistance, frequency, capacitance, temperature, duty cycle.
- Low Z – to detect stray voltages
- Low pass filter for variable frequency drives
- VoltTect™ non-contact voltage detection
- Audible continuity, diode test, backlit LCD display, data hold, relative zero mode

Replacement part: TPK-62

AM-570





38XR-A

XR Series Multimeters

The XR Multimeter Series lets you customize features and functions for your electronic, electrical, plant maintenance or HVAC applications.

HVAC contractors and field service technicians have a choice of the manual ranging 37XR-A with capacitance or the auto-ranging, True-rms 38XR-A with temperature and backlight.

For electronics troubleshooting, the True-rms 37XR-A offers component and logic test. If you're an engineer, designing or troubleshooting industrial automation and control systems, check out the 38XR-A, a True-rms multimeter with bright blue backlight and an optical PC interface.

- Autoranging
- Min/max and data hold
- Separate door for easy battery and fuse access
- Low battery indication
- Relative, peak, and average and data hold
- Analog bar graph
- Input warning tone when test leads are in wrong jack
- Auto power-off to save battery life
- VoltTect™ Non-contact voltage detection

FEATURE	37XR-A	38XR-A
True-rms		•
DC Voltage	1.000 mV, 10.00 V, 100.0 V, 1000 V	
AC Voltage	1.000 mV, 10.00 V, 100.0 V, 1000 V	
DC Current	100.0 µA, 1.000 µA, 10.00 mA, 100.0 mA, 400.0 mA, 10.00 A	
AC Current	100.0 µA, 1.000 µA, 10.00 mA, 100.0 mA, 400.0 mA, 10.00 A	
Resistance	1000.0 Ω, 10.000 kΩ, 100.00 kΩ, 1000.0 kΩ, 10.00 MΩ, 40.00 MΩ	
Continuity		•
Diode		•
VoltTect™ Non-Contact Voltage Detection		•
Capacitance	40.00 nF, 400.0 nF, 4.000 µF, 40.00 µF, 400.0 µF	
Frequency	100.00 Hz, 1.0000 kHz, 10.000 kHz, 100.0 kHz, 1.0000 MHz, 10.000 MHz	
Temperature	-	-4°F → 2372°F (-20°C → 1300°C)
Duty cycle		0.00% → 90.0%
Logic test	•	-
Inductance	40 H	-
dBm		-13 dBm → + 50 dBm

INCLUDED ACCESSORIES: Magne-Grip™ holder with magnetic hanging strap, users manual, K-type thermocouple (38XR-A only), batteries (installed), test leads



★★★★★
TOP RATED
"Excellent - full featured multimeter - Great Price too!" "I use this instrument on a daily basis when I visit various communication rooms to repair radio equipment. All I need is this and a laptop, and what a back saver!"

- 38XR-A customer reviews

Recommended Accessories

- DL248D** Deluxe Test Leads Kit (See Page 60)
- CT235A** Clamp Attachment
- CT237B** Clamp Attachment
- CT238A** Clamp Attachment (See Page 60)
- 38SW-A** RS232 Software/Cable (38XR-A DMM)
- USB-KIT3** Software kit 38XR-A (See Page 62)



DL248D



CT235A, CT237B, CT238A



38SW-A, USB-KIT3



HD110C and HD160C Heavy-duty Multimeters

Built for harsh environments, these unusually rugged meters offer extra features and superior protection that keep them operating reliably in heavy-duty applications.

- Measures up to 1500 V dc and 1000 V ac and withstands transients up to 12 kV (CAT IV 1000 V) – unmatched by other digital multimeters
- IP 67 rated and sealed to prevent dirt, grime and moisture from entering the case and causing inaccurate readings or damaging shorts
- Tough, fire-retardant thermoplastic resists grease and chemical spills and other environmental hazards
- All sensitive components are shock-mounted for drop resistance to at least eight feet
- Magne-Grip™ holder with magnetic hanging strap frees both hands for work
- Automatic polarity indication
- Superior 10,000 count resolution with bar graph
- Bright backlight for superior visibility
- Auto power-off to save batteries plus low battery indication

FEATURE	HD110C	HD160C
True-rms	-	•
DC Voltage	200.0 mV, 2.000 V, 20.00 V, 200.0 V, 1500 V	1000.0 mV, 10.000 V, 100.00 V, 1500.0 V
AC Voltage	200.0 mV, 2.000 V, 20.00 V, 200.0 V, 1000 V	1000.0 mV, 10.000 V, 100.00 V, 1000.0 V
Current AC/DC	200.0 µA, 2.000 mA, 20.00 mA, 200.0 mA, 2.000 A	100.00 µA, 1000.0 µA, 10.000 mA, 100.00 mA, 400.0 mA, 2.000 A
Resistance	200.0 Ω, 2.000 kΩ, 20.00 kΩ, 200.0 kΩ, 2.000 MΩ, 20.00 MΩ	1000.0 Ω, 10.00 kΩ, 100.0 kΩ, 1000.0 kΩ, 10.000 MΩ, 40.00 MΩ
Diode	•	-
Continuity		•
Frequency	-	100.00 Hz, 1000.0 Hz, 10.000 kHz, 100.0 kHz, 1000.0 kHz, 10.000 M Hz
Capacitance	-	40.00 nF, 400.0 nF, 4.000 µF, 40.00 µF, 400.0 µF
Temperature	-	-4°F → 2372°F (-20°C → 1300°C)

INCLUDED ACCESSORIES: Test leads, batteries (installed), users manual, Magne-Grip™ holder with magnetic hanging strap



HD160C

★★★★★
TOP RATED
"Great product with unlimited features" "A workhorse that does everything I need and then some."

- HD160C customer reviews

Recommended Accessories

- DL248D** Deluxe Test Leads Kit (See Page 60)
- CT235A** Clamp Attachment
- CT237B** Clamp Attachment
- CT238A** Clamp Attachment (See Page 60)



DL248D



CT235A, CT237B, CT238A

Why you need a True-rms reading multimeter.

Answer: True-rms instruments are accurate on any AC waveform. There are two basic AC measuring systems. One is "average sensing, RMS indicating." This is the most common system because it is affordable and easy to manufacture. An instrument with this type of measuring system measures the average of a sine wave, and then multiplies it by 1.112, allowing the instrument to indicate RMS. This measuring system is only accurate on sine waves.

The second measuring method is called "RMS Sensing, RMS Indicating." An instrument with this type of measuring system computes the RMS value of the measured waveform (sine or otherwise). This is referred to as "True-rms" reading. This measuring system is accurate for any waveform. When an average sensing instrument is used on a non-sinusoidal waveform, measurement accuracy could

be off as much as 50%. Since you may not know what type of AC waveform you are measuring, a True-rms instrument should be used whenever possible.



Digital Multimeters



AM-500

AM-500 Autoranging Multimeter

For residential or DIY applications. Install, troubleshoot or repair light fixtures, fans, appliances, or automotive electrical problems with the ease and safety of a CAT III 600 V rated product.

- Autoranging feature automatically sets up voltage, current, and resistance ranges
- Voltage up to 600V ac/dc
- Resistance
- Audible continuity
- Data hold, and auto power-off
- Diode test
- Auto power off

FEATURE	AM-500	BEST ACCURACY
AC/DC Voltage	2.000 V, 20.00 V, 200.0 V, 600 V 200 mV, 2.000 V, 20.00 V, 200.0 V, 600 V	+/- (1.0% rdg + 3 LSD) @ 45 Hz to 400 Hz, 2 V to 200 V ranges +/- (0.8% rdg + 1 LSD) @ 2 V to 200 V ranges
AC/DC Current	200.0 µA, 2000 µA, 20.00 mA, 200.0 mA, 2.000 A, 10.00 A 200.0 Ω, 2.000 kΩ, 20.00 kΩ, 200.0 kΩ, 2.000 MΩ, 20.00 MΩ	+/- (1.0% rdg + 2 LSD) +/- (1.0% rdg + 2 LSD) @ 2 kΩ to 200 kΩ ranges
Resistance	200.0 µA, 2000 µA, 20.00 mA, 200.0 mA, 2.000 A, 10.00 A	+/- (1.2% rdg + 2 LSD)

INCLUDED ACCESSORIES: Test leads (pair), batteries (installed), carrying case, users manual



DM73C Multimeter with Built-in Test Probe

Take one-handed measurements with this pocket-sized pen-style digital multimeter.

- Continuity beeper
- LCD display plus analog bar graph
- Auto power-off

FEATURE	DM73C
AC Voltage	3.400 V, 34.00 V, 340.0 V, 600 V
DC Voltage	3.400 V, 34.00 V, 340.0 V, 600 V
Resistance	340.0 Ω, 3.400 kΩ, 34.00 kΩ, 340.0 kΩ, 3.400 MΩ, 34.00 MΩ

INCLUDED ACCESSORIES: Test lead with alligator clip, 2 batteries (installed), spare tip, users manual



PM Series Pocket Multimeters

Great things do come in small packages. Get innovative features, a full set of measurement functions and high safety ratings in an ultra-compact size. Only 3/8" (9.5 mm) thick, each meter weighs less than 3 oz (85 g).

- Easy, one-touch button control
- Oversize, easy-to-read digital display
- VolTect™ non-contact voltage detection (PM55A only)
- Automatically selects ac volts, dc volts or resistance, for convenience (PM55A only)
- Low Z input impedance detect ghost voltages
- Hi Z input impedance for electronic circuitry (PM55A only)
- Continuity beeper
- Diode test
- Data hold
- 30 ms high speed max hold
- Autoranging
- Auto power off

FEATURE	PM51A	PM55A
AC/DC Voltage	400.0 mV, 4.000 V, 40.00 V, 400.0 V, 600 V	6.000 V, 60.00 V, 600.0 V
AC/DC Current	-	400.0 µA, 2000 µA
Frequency	400 Hz, 4 kHz, 40 kHz, 400 kHz, and 1 MHz	10.00 Hz → 30.00 kHz
Resistance	400.0 Ω, 4.000 kΩ, 40.00 kΩ, 400.0 kΩ, 4.000 MΩ, 40.00 MΩ	600.0 Ω, 6.000 kΩ, 60.00 kΩ, 600.0 kΩ, 6.000 MΩ
Capacitance	500.0 nF, 5.000 µF, 50.00 µF, 500.0 µF, 3000 µF	100.0 nF, 1000 nF, 10.00 µF, 100.0 µF, 2000 µF
VolTect™ Non-Contact Voltage Detection	-	•

INCLUDED ACCESSORIES: Carrying case, battery (installed), users manual



PM51A
PM55A



Electrical Testers

Electrical Testers

SAFETY

Use Amprobe tools with confidence. Our tools are tested by Amprobe and certified by UL and other regulatory groups around the world. Amprobe tools are proven performers that protect you and your equipment.



TOP RATED 4.8 Out of 5 Stars

See The Top Rated
INSP-3 Wiring Inspector



Is it Hot or Not?

Why utility crews trust the Amprobe TIC 300 PRO

Feedback from a major US utility and the 30 underground crews who serve a North American city

In every truck, on every trouble call, there's one tool crews reach for first to ensure their safety. That's the TIC 300 PRO. It's the go-to tool for underground crews servicing secondary power lines for a large US utility company in the Northeast. The crew's work takes them down manholes under historic cities where the infrastructure is aging and the problems are frequent.

As lead engineer responsible for troubleshooting, John K. can get calls anytime day or night from one of 30 underground crews. When a cable installer or splicer encounters out-of-the ordinary electrical problems on the job, they call in a "trouble man". And when the trouble man has questions on how equipment operates, he calls John. John constantly stresses the importance of safety to all the crews. He tells them to always assume it's live until they know for sure. Whether they're working on 120 V, 240 V, 5k V or greater, on cables, transformers, or switches, they begin the job by checking to see if the problem area is live or dead. That's the job of the TIC 300 PRO non-contact voltage detector.

After two decades of using Amprobe TIC tracers, the crews know it, trust it, and feel safe – exactly what they need.

Approximately 300 TIC tracers are in use throughout the system. Every crew carries at least one and usually two units in the truck. The cable installers, cable splicers, and trouble men all use them daily, often multiple times each day. They might see an exposed conductor, or a cable that's been cut off or broken. Sometimes one crew starts a job on their shift and another picks it on the next shift, and they need to know for sure what they are walking into.

Lights flash and the TIC 300 PRO beeps with increasing frequency as it nears a source of electricity, leaving the user no doubt whether the area is live or not. They can also quickly track where fault lines between two functioning points.

The crews like how simple the TIC 300 PRO is to use. One bright yellow button turns it on or off. With another button, the user can select either low or high voltage. Buttons are easy to press with heavy gloves, which is important because the crew must wear gloves and full PPE.

The TIC tracers get thrown around in the truck, but the tools are durable enough to take the rough treatment. John has seen some units last more than 20 years.

After using the TIC tracer product line for more than two decades, the crews all know it, trust it, and feel safe with them. To ensure a particular unit is working properly, they can just press the Test button.

John is not only responsible for troubleshooting but also for bringing new products into the company, so he's knowledgeable about his tool choices. He's looked at competitive non-contact voltage detectors, but the trust factor keeps the TIC 300 PRO his number one choice. It does the job, it doesn't fail, and his crews trust it. And that's exactly what they need.



TIC 300 PRO High Voltage Detector

Rugged and reliable for utility, industrial, heavy manufacturing and mine safety applications, the Amprobe TIC 300 PRO with VolTect™ detects voltages in low, medium and high voltage applications with bright visual and loud audible alerts.

- Utility tool for checking transmission lines, power distribution equipment, down power lines, fuses, and load break connectors
- Lower voltage setting for checking voltage presence in breaker panels, breakers, power outlets and wiring
- Verifies presence of voltage from 30 V ac to 122,000 V ac (122 kV)
- MSHA certified and intrinsically safe
- Push button functionality for ease of use with PPE gloves
- Visual and audible voltage indication
- Self-test verifies tester works properly
- Ergonomic design with a convenient handle
- Drop-proof to 6' (1.8 m)

FEATURE	TIC 300 PRO	TIC 410A
VolTect™ Non-Contact Voltage Detection	30 V ac → 1500 V ac 1500 V ac → 122,000 V ac (with Hot Stick TIC 410A)	–
48" long	–	•
Voltage		Up to 121kV

INCLUDED ACCESSORIES: CC-300 PRO carrying case, users manual, batteries (installed)



Recommended Accessories

TIC 410A Hot Stick for the TIC 300 PRO
Safely check voltages up to 122 kV with this 48 inch Hot Stick and the TIC 300 PRO.



CC-300 PRO Carrying Case
(Replacement part)



★★★★★

TOP RATED

"This tester is very accurate!" "I have used these testers for years, this model is convenient, small enough to carry in my pocket, and is a great tester for all of your electrical needs. I totally recommend it."

"Fast and easy to use. I would not think of going to work without it."

- TIC 300 PRO customer reviews



TIC 300 PRO

TIC 410A Hot Stick
(Extends to 48" not to scale)

LT-10 Fluorescent Lamp Tester

Troubleshooting fluorescent lamps is as easy as 1-2-3, saving you valuable time and money. The Amprobe Fluorescent Lamp Tester is a problem solving tool designed to easily test whether fluorescent light bulbs and ballasts are working prior to installation or removal. The intuitive single button operation allows you to troubleshoot lamps and avoid wasteful disposal of fluorescent light bulbs and ballasts.

The compact tool easily fits in your pocket and the industry leading 48" antenna making it easy to test fluorescent bulbs while still in the fixture, often eliminating the need to stand on a ladder.

- Tests fluorescent (electroluminescent) lights
- Built-in VolTect™ non-contact voltage detection
- Filament pin test to check continuity of bulb
- Simple, one-handed, single button operation
- Ultra compact design for portability
- 48" removable, fully retractable antenna included to test lights and voltage without a ladder
- Compatible with all fluorescent light bulbs:
 - T2, T4, T5, T8, T9, T10, T12 Fluorescent energy saving light bulbs

FEATURE	LT-10
Compatible lamps:	T2, T4, T5, T8, T9, T10, T12 Fluorescent energy saving light bulbs
Test voltage:	Approximately 3 kV / 280 kHz
Field strength:	Approximately 100 µV/m at 260 - 300 kHz
Maximum antenna length:	48" (1.2 m)
VolTect™ non-contact voltage detection:	AC 90 V to AC 600 V, 50/60 Hz to CAT II 300 V, CAT I 600 V
Filament pin test	T2, T4, T5, T8, T9, T10, T12

INCLUDED ACCESSORIES: 48" antenna, adaptor plate, users manual, battery and carrying case



Troubleshoot fluorescent lamps in three quick steps.



Step 1: Bulb

Check bulb for presence of gas.



Step 2: Pins

Check pins for voltage continuity.



Step 3: Voltage

Check voltage presence with non-contact voltage detection.

If all three steps pass, replace the ballast.



NEW

LT-10 48" Antenna

INSP-3 Wiring Inspector

Verify in seconds whether a building's wiring complies with electrical code. Save time and money by testing more efficiently and identifying issues crucial to the safety and performance of an electrical system.

- Large display shows all relevant test data, no scrolling or switching screens needed
- Find faulty wiring that needs repair without removing outlet cover plates or panel covers, including:
 - Faulty splices and connections
 - Incorrect wiring
 - Undersized wiring
 - Faulty or incorrectly wired AFCIs/GFCIs
 - Incorrect line voltage
 - Poor ground quality
- Verify performance of electrical systems with user selectable 10, 15 and 20 amp loads
- Flashing screen clearly indicates incorrect wiring or voltage drop test failure
- Test without tripping circuit breakers or blowing fuses
- Check grounding for safety and ability to support sensitive electronic equipment

FEATURE	INSP-3	BEST ACCURACY
Load:	Constant 10, 15 or 20 AMP simulation regardless of line voltage	–
Operating Voltage:	95 V ac → 140 V ac	+/- 2% + 2 LSD
GFI Trip:	6.0 mA nominal to trip GFI, 30 mA to trip RCD	–
AFCI Trip:	Up to 8, 120 AMP pulses within 1/2 second period	–

INCLUDED ACCESSORIES: Power cord, 9 V alkaline battery (installed), users manual, carrying case



INSP-3

Perform Voltage Drop Testing Without Overheating Faulty Lines.

Testing electrical lines under load provides more information on line conditions that one might expect. The National Electrical Code recommends a voltage drop less than 5% on both feeders and branch circuits under load.

High voltage drop and high ground impedance can result from many different issues, including poor splices or connections; undersized wiring for length of run; too many devices connected to the branch circuit; corroded connections; worn switch or circuit breaker contacts and faulty or worn outlets.

Voltage drop relates not only to safety, but also to the function and reliability of electrical systems, especially when modern electronic devices are used on the line.

Contrary to what many assume, electronic products such as computers, copiers, and office equipment can put significant loads on lines. This type of equipment also tends to be the most sensitive to disturbances that heavy loads can create, such as surges, spikes and low voltage.

Excessive voltage drop that is not corrected will often create one or several problems, including premature motor burn-out; component failure; "crashing" or loss of computer data; overheating of motors, electrical lines and other equipment; and highly sensitive lines that easily fluctuate from spikes, surges line noise and other factors.

In addition to marginal equipment operation, high voltage drop can also cause overheating associated with electrical files. This is an excellent reason to

protect your customers and yourself by checking drop under load.

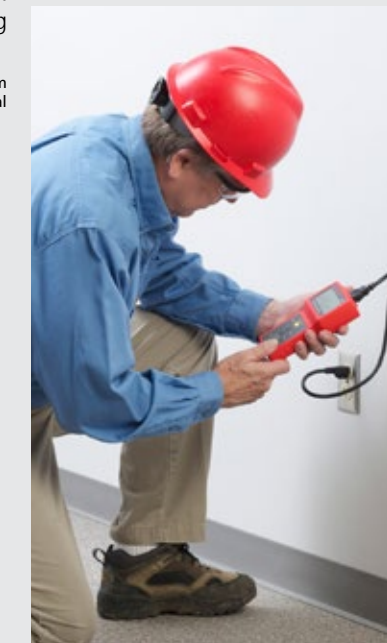
If a line is not tested under load the system may have faults that will not be known until equipment is connected to the line. At this point, excessive voltage drop will almost surely create a callback.

Checking voltage drop under load is a great way to assure yourself and your customers that lines are in good condition, safe and will hold up for years of efficient operation. This test should not be overlooked in the service of electrical wiring systems.

Source: National Electrical Contractors Association, Inc. "Perform Voltage Drop Testing Without Overheating Faulty Lines." Electrical Contractor June 1994. Print.



★★★★★
TOP RATED
"Call this product **"THE DETECTIVE!"**"
"A big time saver! If you want to know all about your branch circuits... GET THIS INSTRUMENT!!!"
- INSP-3 customer reviews



PRM-4 Phase Sequence / Motor Rotation Tester

Phase sequence testing is crucial for many three-phase loads. Improperly connected motors can result in reverse rotation, which can damage the equipment powered by the motor. Ensure electrical equipment is correctly and safely connected with Amprobe's PRM-4.

- Identifies 3-phase sequence
- Open phase check
- Motor shaft rotation indicator protected by CAT III circuitry
- 3-phase to phase input voltage, 100 V ac to 600 V ac max
- 45 to 70 Hz frequency



PRM-4

Recommended Part

TL-PRM-4
Replacement Test Leads



INCLUDED ACCESSORIES: Test leads with alligator clips, carrying case, users manual, 9 V battery (installed)



MO-100 Milliohmmeter

Spot potential failures fast with the portable, battery powered MO-100. Check for opens or shorts in motor windings, generators and transformers. Test heating elements and wire-to-wire resistance in critical electrical connections.

- Accurate four terminal measurement down to 100 μΩ without test leads resistance compensation
- Three test currents with over-temperature protection for measurement precision
- Protection against inadvertent connection to overvoltage
- Potential lead resistance, current lead resistance checks
- Indicates measurement errors due to temperature or connection problems
- Auto-hold and auto-off features
- Lightweight, robust and compact
- "O-Ring" sealed enclosure



MO-100

9.8" (L) x 7.5" (W) x 4.3" (D)
(250 mm x 190 mm x 110 mm)

FEATURE	MO-100
Measuring Ranges	0 → 200.0 mΩ in steps of 100 μΩ 0 → 2000 mΩ in steps of 1 mΩ 0 → 20.00 Ω in steps of 10 mΩ 0 → 200.0 Ω in steps of 100 mΩ 0 → 2000 Ω in steps of 1 Ω
Test Current	1 mA (2000 Ω range) 10 mA (20 Ω / 200 Ω ranges) 100 mA (200 mΩ / 2000 mΩ ranges)

INCLUDED ACCESSORIES: Users manual, test leads, batteries (installed)



Recommended Part

MO-100-LEADS
Replacement Test Leads



VP-1000SB

Designed for safe and convenient, non-contact ac voltage detection without interruption to electrical systems, the VP-1000SB provides 3-way visual, audible and vibration alerts when ac voltage is present.

- Designed to discern between hot and neutral wires up to CAT IV 1000 V ac
- Safety rated for indoor and outdoor applications
- Test for ac voltage cables, circuit breakers, wall sockets, junction boxes, and fuses

FEATURE	VP-1000SB
AC Voltage Detection	90 → 1000 V ac
Indicator	Lights, Beeps and Vibrates
Safety Rating	CAT IV 1000 V

INCLUDED ACCESSORIES: Users manual, batteries (installed)



VP-1000SB

VP-440 Non-contact Volt Probe®

Designed for safe, non-contact voltage detection, this voltage probe doesn't require much budget or demand much space. It fits conveniently in a shirt pocket, tool belt, or pouch.

- Safely check for ac voltages without disconnecting the electrical loads
- Test cables, circuit breakers, wall sockets, junction boxes, and fuses
- Completely insulated, with no exposed metal or conductive parts
- No current flow is needed for correct operation

FEATURES	VP-440
AC Voltage Detection	100 V → 1000 V
Indicator	Lights
Safety Rating	CAT III 1000 V

INCLUDED ACCESSORIES: Users manual, batteries (installed)



VP-440

ST-101B / ST-102B Socket Testers

Easily check and confirm proper wiring of electrical receptacles with the Amprobe ST-101B and ST-102B Receptacle Testers. Quickly test sockets and confirm wiring and operation of AC outlets with the ST-101B and confirm that GFCI breakers are properly wired for protection with the ST-102B.

- Confirm proper wiring and operation of AC socket
- Easy-to-read lights indicate common wiring problems
- The trip test to confirm that GFCI protection is working properly (ST-102B only)
- For use on 110-125 V ac

FEATURES	ST-101B	ST-102B
AC Voltage	110 V → 125 V	110 V → 125 V
GFCI	-	•

INCLUDED ACCESSORIES: Instruction sheet



ST-101B

ST-102B

Electrical Testers

PY-1A Voltage Tester

The Amprobe PY-1A Voltage Tester pocket-sized voltage tester detects AC and DC voltage ranges on cables, circuit breakers, wall sockets, junction boxes, and other electrical wiring through direct contact.

- Neon lights indicate AC voltage at 120, 240, 277, 480V and DC voltage at 160, 330, 380, and 600V
- For use on energized or non-energized circuits
- Simple one hand operation, no buttons or setup required
- Test leads store conveniently in back of unit, properly spaced for outlet testing.
- CSA listed. Safety rated to European Standard 61010-01 Category III 600V

FEATURE	PY-1A
AC Voltage	120 V, 240 V, 277 V, 480 V
DC Voltage	160 V, 330 V, 380 V, 600 V

INCLUDED ACCESSORIES: Users manual



LAN-1 LAN Tester

With quick, go/no-go tests, you can find opens, shorts and miswired cable installations. You can either step through the test cable one at a time, or let the unit automatically pulse through the pin-outs and display the results.

- Remote termination module tests installed cable on wall plate or patch panels
- Perform loopback or remote tests
- Buzzer sound warns for error condition in cable
- Two sets of LED lights indicate source and test
- Maximum line length: 328 yards (300 m)

FEATURE	LAN-1
Cable Types Tested	10/100 base-T; 10 base-2; RJ45; AT&T 258A; EIA / TIA 568A/568B; Token Ring
Continuity Maximum Length	> 300 meters
Connector Types	RJ45, BNC

INCLUDED ACCESSORIES: Users manual, batteries (installed), remote terminator, RJ45 to female BNC cable, RJ45 to male BNC cable, RJ45 to RJ45 cable, Female BNC to Female BNC cable



PY-1A

★★★★★
TOP RATED
"So many wonderful features for such a small package"

"Easy to read voltage display, probe securing, and convenient size are the features I like."

- PY-1A customer reviews



LAN-1

★★★★★
TOP RATED
"I liked the ease of use"

"The tester was easy to use and worked very well in the field, it made the job a lot more easy. I recommend this tool for the field or home."

- LAN-1 customer reviews

Wire Tracers and Underground Locators

TECHNOLOGY

When you want to be absolutely sure you're digging in the right place, depend on the technology leader. No other systems even come close to the speed, reliability and accuracy of Amprobe Underground Cable and Pipe Locators. They are specifically designed for your electrical and utility applications. Amprobe invented Wire Tracer technology and continues to lead the industry today.

★★★★★

TOP RATED
5 Out of 5 Stars

See The Top Rated Advanced Wire Tracers



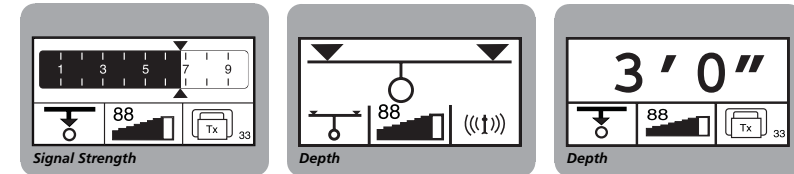
AT-3500 Underground Cable/Pipe Locator System

Keep productivity high and operational costs low, with the AT-3500. This rugged, economical solution helps you locate underground energized and de-energized wires, cables and pipes. Great for parking lot and airport lighting applications, it precisely pinpoints buried services, with exceptionally fast sound and meter response.

- Precisely pinpoint buried cables and wires
- Three testing modes for best accuracy:
 - Passive power (50 Hz / 60 Hz)
 - Passive radio (RF)
 - Active T-3500 signal generator with induction mode directly connected to the cable with test leads or optional clamp
- Proven 33 kHz frequency for most locating applications
- Avoid lines at utility construction sites with highly sensitive power and radio modes
- Take depth measurements up to 16' (4.9m)
- Backlit multiple-segment digital display with audible alerts to show and tell location of buried cables
- Semi-automatic gain control for fast signal location and control

FEATURE	AT-3500
Depth Measurement	16 ft (4.9 m)
Passive Tracing Frequencies	50 Hz / 60 Hz
Transmitter Frequency	Single, non-adjustable
Receiver Active Frequencies (Hz)	32.768 kHz
Receiver Passive Frequencies (Hz)	Range 1: radio 15 kHz to 23 kHz Range 2: power network 50 Hz / 60 Hz; optionally 100 Hz (can be adjusted by Amprobe service personnel)
Receiver Depth Display Accuracy	Range 1: radio +/- 20% Range 2: power network +/- 20% Range 3: transmitter +/- 5% (>5m (6 ft), +/- 20% (<5m (15 ft))
Receiver Depth Range	Maximum 16 ft (4.9 m)

INCLUDED ACCESSORIES: Receiver, transmitter, connection cables, ground stake, carrying case, users manual, batteries (installed)



AT-3500

Recommended Accessories

- SC-3500** Signal Clamp
- MLS55-3** Pipe Transmitter



SC-3500

MLS55-3

AT-4000-A Series Advanced Wire Tracer

Amprobe invented wire tracer technology decades ago and continues to set the standard today. The most advanced of all wire tracers, the AT-4000-A Series combines the technology, features and functions to make wire tracing fast and precise.

- One universal transmitter automatically switches to trace energized and non-energized (open, broken) wires
- Receiver is not position-sensitive - get accurate readings without rotating
- Locates breakers, neutrals, and ground lines
- Locates and traces wires in walls, floors, conduit, and computer cables
- Pinpoints shorts, ground faults and broken wires
- Performs tests without having to interrupt power
- Does not interfere with sensitive electronic equipment
- Precise sensitivity adjustment
- Battery booster strengthens signal for open tracing
- Clamp-on attachment injects signal for non-contact operation



AT-4005-A

SPECS	RANGE
Transmitter operating voltage	9 V - 300 V ac/dc
Operating frequency	32.786 kHz
Receiver short mode range and open mode range	20' (6 m) in air from the traced wire under test conditions

FEATURES	AT-4001-A	AT-4003-A	AT-4004-A	AT-4005-A
Traces energized wires without power interruption. Locates breakers without power interruption	•	•	•	•
Traces unenergized wires (wire continuity and wire grounded at the end). Pinpoints shorts and ground faults	•	•	•	•
Traces unenergized open wires (broken or disconnected wire). Pinpoints place where wire is broken	•	•	•	•
Supplied with clamp-on attachment to inject signal without making contact with bare wire	-	-	•	•
Supplied with Battery Booster to strengthen signal for open tracing	-	-	-	•

KIT CONTAINS:	AT-4001-A	AT-4003-A	AT-4004-A	AT-4005-A
Carrying Case	Soft SV-1000	Hard CC-AT-4000	Hard CC-AT-4000	Hard CC-AT-4000
Receiver R-4000 CON	•	•	•	•
Transmitter T-4000	•	•	•	•
110V Pigtail - Banana Plug Cord Set C2901	•	•	•	•
Alligator Clip - Banana Plug Cord Set C2902	•	•	•	•
Grounding Test Lead 25' (7.6 m) MTL-G	•	•	•	•
Alligator Clip for Ground Lead VRC-320	•	•	•	•
Clamp-on Transmitter Accessory A2202	-	-	•	•
Rechargeable Battery Pack B2024	-	-	-	•
Battery Pack Recharger B2025	-	-	-	•
Users Manual	•	•	•	•

★★★★★
TOP RATED
"A must have for all electricians"

"This product will find wires buried in walls! Imagine being able to trace a circuit with a problem either from the receptacle device to where it has caused a problem or is discontinuous or shorted"

"With the AT-4004-A, I'm able to work in all situations with ONE unit! It's sensitive, easy to use, and with the optional clamp, it's easy to trace a conductor without the hassle of trying to find a suitable connection point."

- AT-4004-A customer reviews

Recommended Accessories

- A2202** Clamp-on Transmitter Accessory



★★★★★
TOP RATED

"This product is great for finding depth and location"

"I've used one for years locating phone and gas lines and it works great. I can find and track wire or pipe and also know how deep within a few inches for digging and locating."

- AT-3500 customer reviews

AT-2000-A Series Wire Tracers

Without interrupting power, you can trace live wires buried or hidden behind walls up to 13' (4 m) deep.

- Traces unenergized and open (broken) wires
- Locates breakers, neutral and ground lines
- Locates and traces wires in walls, floors, conduit, computer cables, etc.
- Pinpoints shorts, ground faults and broken wires
- Does not interfere with sensitive electronic equipment

FEATURES	AT-2004-A	AT-2005-A
Traces energized wires and locates breakers without interrupting power	•	•
Traces non-energized wires (continuity and grounded wire) and pinpoints shorts & ground faults	•	•
Traces unenergized open wires (broken or disconnected wire). Pinpoints place where wire is broken	•	•
Supplied with clamp-on attachment to inject signal without making a contact with bare wire	•	•
Includes battery booster that strengthens signal for open tracing	–	•

KIT CONTAINS:	AT-2004-A	AT-2005-A
R-2000 Receiver	•	•
S2600-A Transmitter 9-300 V	•	•
T2200 Transmitter for open tracing	•	•
Clamp-on Transmitter Accessory A2201CE	•	•
B2024 Rechargeable Battery Pack	–	•
B2025 Battery Pack Recharger	–	•
C2901 Cordset 110 Volt Plug to Banana Plugs	•	•
C2902 Cordset Alligator Clips to Banana Plugs	•	•
Users Manual	•	•



AT-2005-A



AT-2004-A

AT-1000 Wire Tracer

For basic applications where accuracy and routine troubleshooting are important, choose the Amprobe first-tier circuit tracer.

- Trace energized lines up to 300 V ac or V dc
- Trace unenergized and open conductors
- Identifies breakers and fuses without powering down
- Locates shorts
- Identifies wires in a bundle
- Identifies control, alarm and telephone system wiring
- Traces coaxial cable shield
- Receiver range 1 to 3 feet from a cable being traced

FEATURE	AT-1000
Trace energized lines up to 300 V ac or V dc	100 V → 125 V ac (X1000 Transmitter)
Range 1-3' from a cable being traced	R1000 Receiver

INCLUDED ACCESSORIES: Users manual, batteries (installed), transmitter, receiver, connection cables, carrying case



AT-1000

CT-100 and CT-326-C Current Tracers

For tough industrial applications, we recommend these heavy-duty current instruments to trace live wires buried underground or hidden behind walls up to 4' (1.2 m) deep.

- Performs tests without having to interrupt power
- Locates breakers, neutral and ground lines
- Locates and traces wires in walls, floors, conduit, computer cables, etc.
- Pinpoints shorts and ground faults
- Does not interfere with sensitive electronic equipment

FEATURES	CT-100	CT-326-C
Traces energized wires and locates breakers without interrupting power	9 V → 300 V ac/dc	9 V → 300 V ac/dc
Traces non-energized wires (continuity and grounded wire) and pinpoints shorts & ground faults	T-100 Transmitter & 9 V batteries	Transmitter & 9 V batteries
Digital filter to assure accuracy in noisy industrial environments	–	•
Sensitivity Settings	3	12

INCLUDED ACCESSORIES: Users manual, transmitter, receiver, connection cables, carrying case

★★★★★
TOP RATED

"Hands down best circuit tracer on the market"

"This unit has proven to be 100% accurate every time. It has never failed me and it is one of the first tools I purchase when going to work for a new company."

- CT-326-C customer reviews



CT-100



CT-326-C

BT-250 Breaker Tracer

When you need to identify circuit breakers quickly and efficiently, count on this durable and dependable tracer.

- Works on all electrical systems from 90 to 280 V ac
- Meets the latest code requirement
- Automatic sensitivity adjustment
- Extremely accurate reading always finds the right breaker

FEATURES	BT-250
Voltage Range	90 V → 250 V
Frequency Range	40 Hz → 70 Hz

INCLUDED ACCESSORIES: Users manual, transmitter, receiver, carrying case, connection cable, light fixture adapter, batteries (installed)



BT-250





DM-III

Power Quality Counts

DM-III - Power Quality, Improving Plant Efficiency

The Superior Group, an electrical contracting company based in Columbus, Ohio, uses the Amprobe DM-III Multitest F Power Quality Recorder as a regular part of its business. The company works on a wide variety of projects, from very large data centers, to public works and even voice and data through its data vision.

"We are probably one of the larger electrical contractors in the area," said Rich Hartman, vice president of service and small projects for The Superior Group. "We employ approximately 150 people at this time and electrical construction makes up 60-70 percent of our business. We have 13 service trucks that will do anything from a one-hour service call to \$100,000 projects." Because of its diverse customer base, which includes Coca-Cola, Chase Bank and Abercrombie and Fitch, The Superior Group needs a flexible tool that can troubleshoot a wide variety of problems.

"The biggest thing we use the DM-III for are power issues with our industrial customers and even some of the new construction projects," Hartman said. "A lot of times we're looking at voltage problems, at motors of drives dropping out, so we'll go in and record for a week to see if the issues are power quality related or if it's something with the plant. Power quality has always

been an issue. We have done harmonics readings on some equipment for one of our clients. They were having harmonics issues on their drives, which we ended up putting on some capacitors to correct."

Including power quality analysis as a regular part of plant maintenance improves safety, saves energy as fuel prices skyrocket, and helps companies meet increasing emissions regulations. The Amprobe DM-III gives technicians a single, affordable tool with complex testing capabilities to take a global look at systems and run them efficiently.

"The thing I like about the Amprobe DM-III is that it's compact and easy to use"

"The thing I like about the Amprobe DM-III is that it's compact and easy to use," Hartman said. "It's a no-brainer to take out in the field and set-up. Everything about it is more user-friendly than what we used in the past."

★★★★★
TOP RATED

"Definitely worth the investment"

"This meter has a lot of useful features that can be used to monitor services, equipment, generators or individual circuits. It can be used to record before and after any work done to document savings on power factor correction, energy efficient lighting, VFDs instead of cross the starters also used in Harmonic recordings."

- DM-III Multitest F customer reviews

Insulation / Ground Power Quality

EFFICIENCY

Reduce downtime, predict equipment life and cut energy costs with Amprobe tools. The Amprobe insulation resistance testers support your preventative maintenance programs while the Amprobe power quality tools help you conserve energy and keep your equipment operating at peak performance. Use the Amprobe ground testers to not only operate efficiently, but also safely.

★★★★★

TOP RATED

See Amprobes Top Rated Insulation / Ground / Power Quality Testers



Insulation / Ground / Power Quality



AMB-45

AMB-45 Digital Insulation Tester

Test insulation of wires, cables, transformers and electrical motors quickly and easily with this rugged tester.

- Quickly test insulation of wires, cables, transformers and electrical motors
- Includes test leads and PC software
- Selectable test voltages 250 V, 500 V and 1000 V
- Programmable timer to perform the dielectric absorption ratio test
- Sensitive ohmmeter for checking resistance of motor windings
- Built-in voltmeter
- Data logging capabilities
- Download data to PC

FEATURES	AMB-45
Insulation resistance (250 V dc)	4.000 MΩ, 40.00 MΩ, 400.0 MΩ, 4000 MΩ
Insulation resistance (500 V dc)	4.000 MΩ, 40.00 MΩ, 400.0 MΩ, 4000 MΩ
Insulation resistance (1000 V dc)	4.000 MΩ, 40.00 MΩ, 400.0 MΩ, 4000 MΩ
Low resistance	400.0 Ω, 4000 Ω
Voltage ac/dc	600.0 V

INCLUDED ACCESSORIES: Test leads, users manual, batteries (installed), carrying case, software & download cable



Recommended Accessories

AMB-45-CABLE USB to 3.5mm Male Connector Communication Cable

★★★★★
TOP RATED

"Met and exceeded my needs"

"The high volt and low ohm features go hand in hand with this type of meter, the memory and record feature that lets me download to my computer is just brilliant"

- AMB-45 customer reviews



AMB-25

AMB-25 Digital Insulation Resistance Tester

Quality tools don't have to be expensive. These affordable, rugged megohmmeters are fast and easy to use, and offer the features you need for most insulation test applications including wires, cables, transformers and motors.

- Selectable test voltages up to 1000 V
- Button lock for Dielectric Absorption Ratio (DAR) test
- Sensitive ohmmeter for checking resistance of motor windings
- Internal memory stores up to 9 readings

FEATURES	AMB-25
Insulation resistance (250 V dc)	40.00 MΩ, 400.0 MΩ
Insulation resistance (500 V dc)	400.0 MΩ, 1000.0 MΩ
Insulation resistance (1000 V dc)	400.0 MΩ, 2000.0 MΩ
Low resistance	999.9 Ω

INCLUDED ACCESSORIES: Test leads, users manual, batteries (installed)



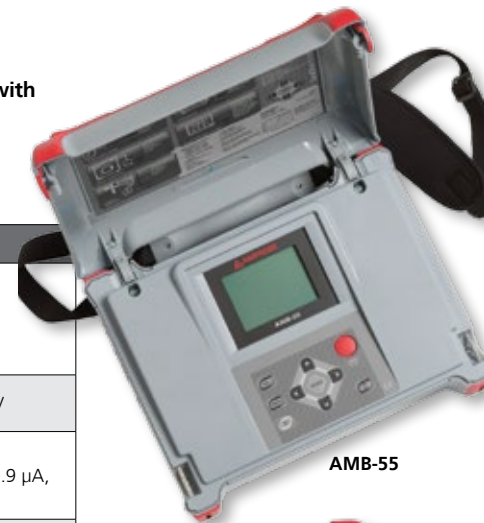
AMB-50, AMB-55 and AMB-110 Industrial High Voltage Insulation Testers

Professional insulation diagnostics, automated calculations and step voltage testing satisfy the most demanding applications. Accurately test cables, transformers, motors, surge arrestors and generators in noisy environments such as high voltage switch yards. Built-in noise rejection filters and shielded test leads provide high EMI immunity.

- Use one tester for low and high voltage systems with selectable test voltages:
 - AMB-50: 500 V, 1000 V, 2500 V and 5000 V
 - AMB-55: 250 V to 5000 V with 25 V increments
 - AMB-110: 500 V to 10,000 V with 25 V increments
- R(t) graph plots resistance in real-time to illustrate a response to the applied voltage
- Programmable timer
- Automatic discharge of test object after measurement is complete
- Measure and display all parameters simultaneously on large LCD
- Fast charging and testing
- Dual power source: receptacle or rechargeable batteries
- Built-in memory stores up to 1000 measurements with time and date
- Record and manage measurement data with PC Software via either RS232 or USB



AMB-50



AMB-55



AMB-110

FEATURE	AMB-50	AMB-55	AMB-110
Insulation Resistance	0.5 MΩ → 20 GΩ, 2 MΩ → 40 GΩ, 5 MΩ → 100 GΩ, 100 MΩ → 1000 GΩ	0 Ω → 999 kΩ, 1.00 Ω → 9.99 MΩ, 10.0 MΩ → 100.0 MΩ, 1.00 Ω → 9.99 GΩ	
Test Voltage and Step Voltage Display Range	0 V → 5000 V	0 V → 5500 V	0 V → 10000 V
Current Display Range	0 mA → 1.2 mA	0.00 nA → 9.99 nA, 10.0 nA → 99.9 nA, 100 nA → 999 nA, 1.00 μA → 9.99 μA, 10.0 μA → 99.9 μA, 100 μA → 999 μA, 1.00 mA → 5.50 mA	
Dielectric Absorption Ratio (DAR)	0 → 9.99		0.01 → 100.0
Polarization Index (PI)	0 → 9.99		0 → 100.0
Dielectric Discharge Test (DD)	0 → 9.99		0 → 100.0
Leakage Current Display Range	1 mA → 1.2 mA		0 mA → 5.50 mA
External Voltage Measurement	30 V → 600 V		0 V → 600 V
Capacitance Measurement	-		0 nF → 99.9 nF, 100 nF → 999 nF, 1 μF → 50.0 μF
Download PC Interface	•		•
Memory Size	18 Measurements		128 kB

INCLUDED ACCESSORIES: Test lead, large jaw alligator clips, batteries, users manual, carrying case, software, RS-232 cable (AMB-55, AMB-110 only), USB cable



Recommended Accessories

- AMB-50-KIT1** Test leads (AMB-50) (Replacement part)
- AMB-KIT1** Test leads (AMB-55, AMB-110) (Replacement part)
- AMB-KIT2** 10 KV Shielded Lead with Tip (AMB-110 Replacement part)



AMB-50-KIT1

★★★★★
TOP RATED

"All the required tests can be done with this product"

"Measurement of dielectric discharge has importance in the measurement of insulation resistance, it's really a diagnostic insulation tester."

- AMB-110 customer reviews



AMB-3 Insulation Testers

Cut unscheduled downtime and reduce shock hazards. Quickly check the insulation resistance value of electric equipment and lines with this small, easy-to-operate tester.

- Sensitive ohmmeter for checking resistance of motor windings
- Built-in voltmeter
- Battery OK test
- Mirror scale
- Automatic discharge of equipment capacitance for safe removal of test leads

FEATURE	AMB-3
Insulation Resistance with 500 V dc Test Voltage	0 Ω → 1000 MΩ
Voltmeter	0 → 600 V AC

INCLUDED ACCESSORIES: Users manual, batteries (installed), carrying case, test leads

★★★★★
TOP RATED

*"Best product on the market, job well done."
"Very easy to use and read, I would recommend this to anyone."*

- AMB-3 customer reviews

AMC-2, AMC-3 and AMC-4 Hand-Cranked Insulation Testers

Test insulation of wires, cables, transformers and electrical motors without batteries or external power. With these hand-cranked tools, you're always ready to test.

- Sensitive ohmmeter for checking resistance of motor windings
- Guard terminal eliminates surface leakage that may influence readings
- Light and smooth operating crank
- Rugged cross coil movement
- High impact housing
- Spring-loaded terminal connection

FEATURE	AMC-2	AMC-3	AMC-4
Insulation Resistance with 500 V dc Test Voltage	0 Ω → 100 MΩ	–	0 Ω → 100 MΩ
Insulation Resistance with 1000 V dc Test Voltage	–	0 Ω → 500 MΩ	0 Ω → 500 MΩ
Low Resistance (5 V DC)	0 Ω → 200 Ω	0 Ω → 200 Ω	0 Ω → 200 Ω

INCLUDED ACCESSORIES: Users manual, carrying case, test leads

★★★★★
TOP RATED

*"Easy to read dial and durable."
"This is one of the most durable meters for testing resistance and simple to use."*

- AMC-2 customer reviews



AMB-3



AMC-4

Recommended Accessories

AMC-LEADS Test leads (AMC-2, AMC-3, AMC-4) (Replacement part)

No Hassle Warranty - No waiting. No shipping charges.

Our commitment to high-quality products and customer service is demonstrated by our industry exclusive "No Hassle" warranty.

In the unlikely event that an Amprobe Test Tool requires warranty service, any of our local dealers are authorized to replace it, on the spot. (\$500 MSLRP limit)

The product warranty is stated in the user's manual that comes with each product and can be downloaded from www.Amprobe.com

For warranty service, please contact the Amprobe Service Department at 1-877-AMPROBE.



GP-2A Ground Resistance & Resistivity Tester

For installation and troubleshooting, this instrument provides accurate and reliable measurements of ground resistance and soil resistivity to help you reduce power quality problems.

- Measures earth ground resistance with 3-point (fall of potential) or 2-point tests
- Calculates resistivity with 4-point test
- Automatic voltage measurement prevents false measurements
- Autoranging
- Store up to 999 measurements
- Create custom reports by downloading data to a PC

FEATURE	GP-2A
Ground Resistance	1999 Ω
Ground Resistivity	314 kΩm
AC Current	–
AC Voltage	0 V – 460 V

INCLUDED ACCESSORIES: Users manual, batteries (installed), connection cables, 4 ground stakes, PC software and USB cable, carrying case



GP-2A

Recommended Accessories

AMPRB-ET4 Set Earth Testing Accessory Kit (Replacement part)

DGC-1000A Clamp-on Ground Resistance Tester

User-friendly and accurate, the DGC-1000A helps you work safely without test leads or auxiliary electrodes. The on-board memory and data logging features improve efficiency.

- Accurate ground resistance measurements from 0.025 to 1500 Ohms
- True-rms current and leakage current measurements
- Accurate readings in less than 10 seconds
- Audible alert if continuity beep if the resistance is below 40 Ohms
- Data logging capability - 116 records
- Individual data point recordings
- User selectable high and low ohm audible alerts
- Auto power-off (can be disabled)
- Low battery indicator

FEATURE	DGC-1000A
Ground Resistance	0.025 Ω → 1500 Ω
Ground Resistivity	–
AC Current	0.2 mA → 30.00 A
AC Voltage	–

INCLUDED ACCESSORIES: Carrying case, users manual, resistance calibration plate, batteries (installed)



DGC-1000A

★★★★★
TOP RATED

"Great instrument. An advantage to have."

"This tool proved invaluable and allowed the customer to save thousands on downtime and predictive maintenance, I highly recommend it."

- DGC-1000A customer reviews

**DM-III Multitest and DM-III Multitest F
Power Quality Recorders**

Cut energy costs and improve operating efficiency with the Amprobe full-featured three-phase Power Quality Recorders. They offer the essential functions and capabilities for today's demanding electrical environments.

- Measures and records a broad spectrum of power quality parameters with true-rms accuracy
- Compatible with a wide range of current transducers
- Works with single- and three-phase systems (Y and Delta)
- Detects and records voltage anomalies, sags and surges
- Tests insulation of wires, cables, transformers and electrical motors
- Programmable timer to perform the Dielectric Absorption Ratio Test
- Selectable polarization of ohmmeter for checking grounding continuity
- Built-in scope displays waveforms
- Manual and programmable recording start
- Ensure uninterrupted data recording with password protection
- Records up to 64 parameters (single- or three-phase) simultaneously
- Special data compression system and user selectable rates allow recording from several hours to several years
- Downloads measurements to PC with software
- Line or battery powered
- Automatic voltmeter protects against misuse on hazardous energized systems

FEATURE	DM-III MULTITEST	DM-III MULTITEST F
AC Voltage	600 V	
AC Current	1000 A	3000 A
Optional CTS	1000 A, 3000 A	100 A
Harmonics	THD, DC to 49th	
Power	W, VAR, VA	
Energy	Wh, WARh, VAh	
Voltage Anomalies	Sag / Surge	
Power Factor	0.00 +/- 1.00	
Frequency	50 / 60 Hz	
Phase Sequence	1-2-3	
Insulation Tester	50 V, 100 V, 250 V, 500 V, 1000 V	
Ground Resistance	Resistance & Resistivity	

INCLUDED ACCESSORIES: External power supply, users manual, test leads, ground resistance test leads with 4 ground stakes, carrying case, PC software with USB cable, 3 current transducers (1000 amps for Multitest and 3000 amps for Multitest F)



DM-III

★★★★★
TOP RATED

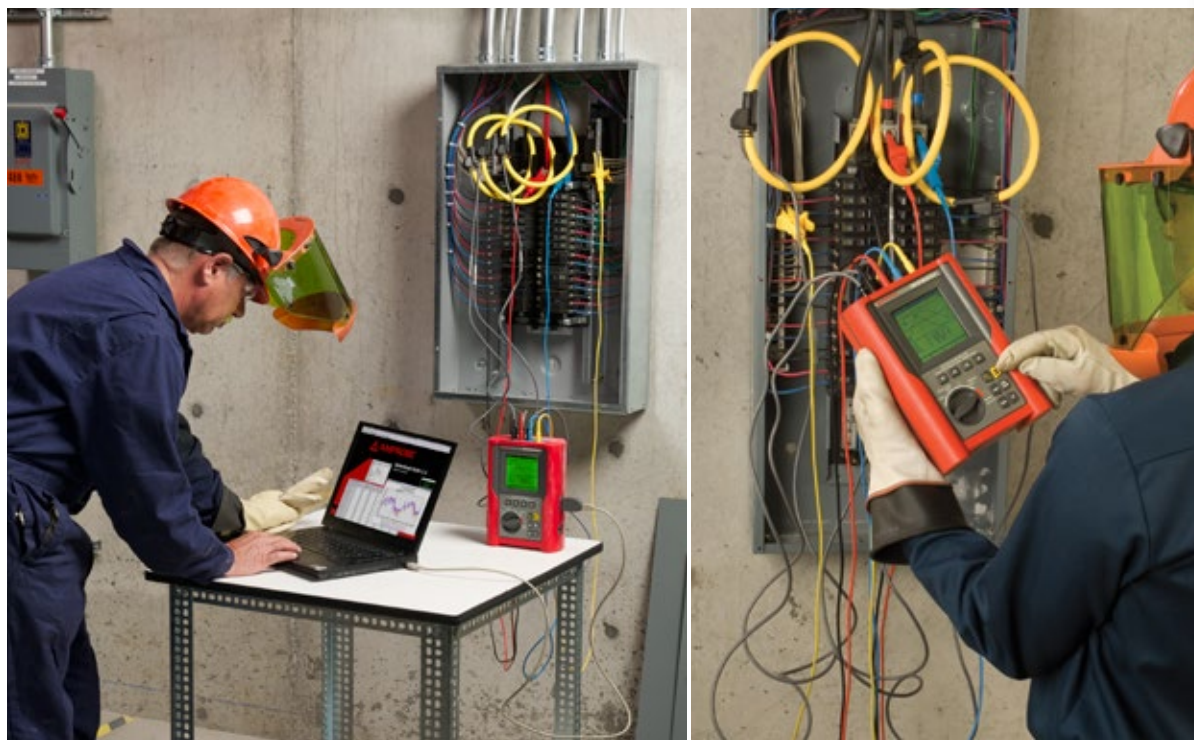
"Definitely worth the investment!"

"This meter has a lot of useful features that can be used to monitor services, equipment, generators or individual circuits. It can be used to record before and after any work done to document savings on power factor correction, energy efficient lighting, VFDs instead of cross the starters - worth the money."

- DM-III Multitest F customer reviews

Recommended Accessories

- CC-DM-III** Hard Carrying Case
- DM-CT-100** 100 Amp Current Transducers
- DM-CT-HTA** 1000 Amp Current Transducers (included with DM III Multitest)
- AM-FLEX33** 3000 Amp Flexible Current Transducer (included DM III Multitest F)
- C2006** PC Cable and Software Interface (Replacement part for DM III Multitest and DM III Multitest F)
- DMT-EXTPS** External Power Supply (Replacement part for DM III Multitest and DM III Multitest F)
- TLDM** Test Lead Set (Replacement part for DM III Multitest and DM III Multitest F)



Temperature

Temperature



TARGETED

When you need tools designed specifically for all the jobs you do in HVAC, turn to Amprobe. When you need to measure temperature, the complete line of Amprobe temperature measurement tools range from infrared thermometers to specialized thermometers offering remote access to measurements.



TOP RATED

5 Out of 5 Stars

See The Top Rated IR-750 Infrared Thermometer

IR-700 Series Infrared Thermometers

The Amprobe IR-700 Series Infrared Thermometers offer five IR thermometers with precision performance, unparalleled accuracy and response time. Specifically designed for HVAC/R, electrical, industrial maintenance, automotive as well as quality control and fire prevention applications.

- Distance to Spot ratio up to 50:1
- Wide temperature ranges
- Adjustable emissivity for measuring a variety of materials
- Min/max memory



IR-750



★★★★★ **TOP RATED**

"Excellent resolution"

"Great tool for taking temp readings while keeping your hands away from moving parts."

I have used this tool to take temp readings on radiators, air conditioners and engine parts while the engine was running, keeping my hands at a safe distance. I would recommend this tool."

- IR-750 Infrared Thermometer, customer reviews

100% of customers who reviewed this product also recommend it.

	IR-710	IR-720	IR-730	IR-750
Distance to Spot (D:S)	10:1	20:1	30:1	50:1
Temperature Range	0°F to 716°F -18°C to 380°C	-26°F to 1922°F -32°C to 1050°C	-26°F to 2282°F -32°C to 1250°C	-58°F to 2822°F -50°C to 1550°C
Best Accuracy	±2% (Typical)	±1.8% (Typical)		
Emissivity	0.95	Adjustable from 0.10 to 1.00		
Display Resolution	0.1°C / 0.1°F			0.1°C / 0.1°F of reading < 999.9
Backlit dual LCD display	•	•	•	•
Auto display and MIN/MAX Memory	•	•	•	•
DIF/AVG Temperature Display	-	•	•	•
Tripod mount	-	•	•	•
Programmable high and low alarm	-	-	-	•
USB cable	-	-	-	•
Built-in memory	-	-	-	99
K-type thermocouple measurement	-	-	-	•

INCLUDED ACCESSORIES: Battery (installed), users manual
 Carrying case: IR-720, IR-730, IR-750
 IR-750 only: K-type thermocouple, USB cable and software CD



Recommended Accessories

EPS-700 External Power Supply
 IR-750
 (Optional accessory)



Precision Performance

The Amprobe IR-750, Extremely High Accuracy and 50:1 Distance to Spot.



Instead of perching on a ladder or crawling on your hands and knees to take critical temperature measurements, use the advanced Amprobe IR-750 50:1 Infrared Thermometer to check supply and return registers, find leaky or broken ducting, map temperatures, check compressor lines and much more. With data-logging capabilities downloadable to PC and a K-type thermocouple inputs, you're able to take temperature measurements up to 2822°F (1550°C).

The larger the Distance to Spot (D:S) ratio, the better the resolution and the smaller the area that can be measured. The IR-750 with a D:S of 50:1, will measure a 1" diameter at a distance of 50" away, perfect for demanding quality and process control applications.

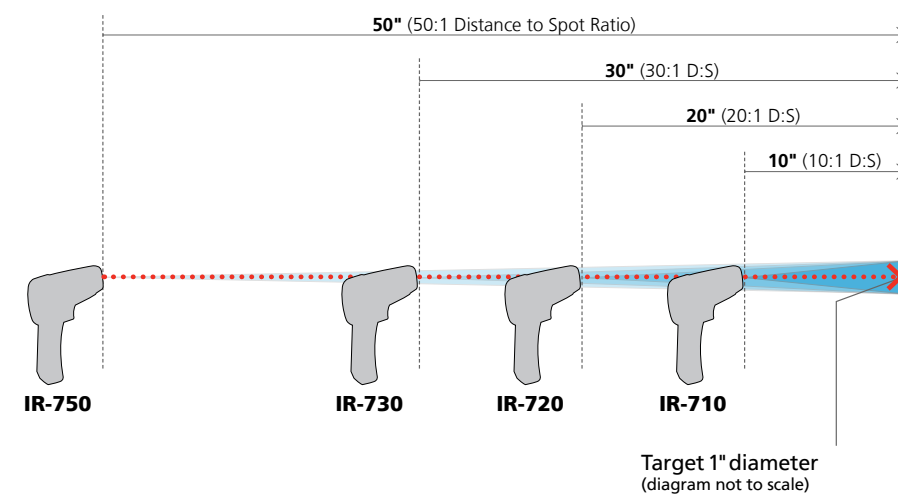
Get the most accurate measurements by following these basic guidelines:

- Get as close as safely possible to your target
- Know the D:S ratio for your thermometer. The area of the spot grows larger the further you are from the target
- If you need to measure a reflective target, mask it with flat black paint or black tape. IR thermometers calculate the surface temperature of an object by measuring the amount of energy emitted. Shiny or reflective objects have excess emissivity that can skew your temperature measurements.
- Experiment with several angles to capture the best reading and mitigate reflected energy

★★★★★ **TOP RATED**

"This IR thermometer has proven indispensable for board level troubleshooting as it helps find hot spots, overloaded components that are over stressed (hot) and gives accurate temperatures of the component. It helps in locating shorts and other problems which can cause failure to the assembly. Wonderfully easy to control in hand and be easy to read."

- IR-750 Infrared Thermometer, customer review





IR-450

IR-450 Infrared Pocket Thermometer, Flashlight and Laser Pointer

A must have tool for everyday applications, the IR-450 3-in-1 Infrared Pocket Thermometer, Laser Pointer, and Flashlight offers a uniquely small and convenient form factor with professional 8:1 distance to spot ratio. More portable than traditional infrared thermometers, quickly check temperatures in HVAC/R, fire safety and protection, industrial maintenance, automotive and quality control applications.

- 8:1 distance-to-spot ratio
- Bright laser pointer
- Built-in LED flashlight to illuminate dark areas
- Holds temperature reading (selectable °F/°C) for ten seconds

SPECIFICATIONS	IR-450
Range	-22°F → 932°F (-30°C → 500°C)
Distance to Spot Size	8:1 ratio
Best Resolution	0.5°F (0.2°C)
Best Accuracy	+/- 4°F (2°C)
Emissivity	Pre-set 0.95

INCLUDED ACCESSORIES: Battery (installed), users manual, pocket clip



IR608A

IR608A Infrared Thermometer with Laser Pointer

Point and press for quick and easy non-contact temperature measurement. Use this effective diagnostic tool to identify temperature for HVAC, fire safety and protection, industrial maintenance, automotive and quality control.

- Pocket-sized, ergonomic design
- Laser sighting for accurate targeting (CE EN60825 certified Class II)
- Display hold
- Fast response time
- Backlight display for visibility in a variety of working conditions
- Low battery indicator

SPECIFICATIONS	IR608A
Range	0°F → 750°F (-18°C → 400°C)
Distance to Spot Size	8:1 ratio
Best Resolution	0.5°F (0.2°C)
Best Accuracy	+/- 2% of reading or +/- 3.5°F (+/- 2°C) whichever is greater
Emissivity	Pre-set 0.95

INCLUDED ACCESSORIES: Battery (installed), users manual



★★★★★
TOP RATED

"It doesn't get any easier."

"I would recommend this tool very highly to HVAC technicians and anybody that has to evaluate heat loss and efficient use of energy."

- IR608A
Customer reviews

THWD-3 and TH-3 Relative Humidity and Temperature Meters

An exceptionally wide ambient temperature range makes these meters versatile and accurate.

- Large LCD displays two measurements simultaneously
- Extended probe stem for easy access to air ducts
- Dew point and wet bulb (THWD-3 only)
- Min/max readings
- Temperature measurement range: -4°F (-20°C) to 140°F (60°C)
- Data hold
- Capacitive sensor with protective cover
- Auto power-off

INCLUDED ACCESSORIES: Carrying case, battery (installed), users manual

TH-1 Compact Probe Style Relative Humidity Meter

Slip this little meter in your pocket and be ready for quick temperature and humidity checks.

- Displays relative humidity and temperature simultaneously
- Measure wet bulb and dew point
- Precision capacity relative humidity sensor with twistable protective cap
- Results in metric or English
- Stores min/max readings for comparisons
- Data hold

FEATURE	THWD-3	TH-3	TH-1
Temperature – Internal Sensor	-4°F → 140°F (-20°C → 60°C)		-44°F → 122°F (-20°C → 50°C)
Relative Humidity	5 → 95%		10 → 95%
Dew Point Temp	•	-	•
Wet Bulb Temp	•	-	•

INCLUDED ACCESSORIES: Carrying case, users manual, battery



TH-1



THWD-5 Relative Humidity and Temperature Meter with Wet Bulb and Dew Point

Designed for HVAC technicians and plant maintenance engineers, this microprocessor-based psychrometer provides quick, easy access to wet bulb and dew point values as well as temperature and relative humidity.

- Extended probe for easy access to targets
- Large digital dual display with backlight makes readings easy-to-see
- Temperature with 0.1 degree resolution in °F or °C, front panel selectable
- Stores min/max measurements
- Data hold freezes last reading
- Tripod mountable

FEATURES	RANGE	BEST ACCURACY
Relative Humidity	0% → 100%	+/- 3% from 10% → 90% (at cal temp) +/- 5% for other
Temperature	14°F → 140°F (-10°C → 60°C)	+/- 0.6°C (+/- 1°F)
Dew Point Temp	-100.0°F → 139.8°F (-73.4°C → 59.9°C)	-
Wet Bulb Temp	7.88°F → 139.8°F (-13.4°C → 59.9°C)	-

INCLUDED ACCESSORIES: Carrying case, users manual, batteries (installed)



THWD-5



TMD-50 Series Thermometers

The professional choice for HVAC technicians, electricians and research, industrial process, and quality control applications, these thermometers offer dual inputs for easy super-heat and sub-cool temperature measurements. Monitor and track temperatures, the multi-logging thermometers feature real-time clocks with a calendar, user-selectable recording intervals, and easy data recall using up and down keys.

- °F/°C selectable
- Dual input: T1, T2, T1-T2
- Audible alert with Hi/Lo settings for out-of-range measurements
- Min/max with elapsed time, average, relative, hold functions
- Time and relative settings
- In-field thermocouple offset adjustment
- Robust holster protects the instrument
- Auto power-off saves batteries

FEATURE	TMD-50	TMD-53	TMD-56
Thermocouple Type	K	K, J	K
Basic Accuracy	0.1%	0.05%	0.05%
Number of Parameters on the Display	1	3	3
Real time clock - Wireless Beeper with Setting	-	•	•
Data Capture	-	-	256 Samples
Data Logger	-	-	16,000 Points
PC Interface	-	-	USB

Temperature ranges for TMD-56 series by thermocouple:

THERMOCOUPLE TYPE	TEMPERATURE RANGE
K-TYPE	-328°F → 2501°F (-200°C → 1372°C)
J-TYPE	-346°F → 2192°F (-210°C → 1200°C)
T-TYPE	-328°F → 752°F (-200°C → 400°C)
E-TYPE	-346°F → 1832°F (-210°C → 1000°C)
R-TYPE	32°F → 3212°F (0°C → 1767°C)
S-TYPE	32°F → 3212°F (0°C → 1767°C)
N-TYPE	-58°F → 2372°F (-50°C → 1300°C)



TMD-56

★★★★★
TOP RATED

“Works great, use it all the time”

“Get a lot of use out of it, I’m a maintenance tech in a large paint shop and use it to check oven temps, I can log temps throughout the day and download on the computer. Great product with a lot of features.”

TMD-56
Customer reviews

TMD-50

These highly accurate thermometers give precise measurements on a large, easy-to-read backlit display. The robust holster protects the instrument. Auto power-off saves batteries.

- Dual input: T1, T2, T1-T2 °F/°C selectable
- Average/relative zero functions
- Min/max/hold functions
- In-field thermocouple offset adjustment

INCLUDED ACCESSORIES: Users manual, 2 K-type thermocouples, 4 batteries (installed)



TMD-50

TMD-53

When your application demands even higher accuracy, choose these models. An audible alert with Hi/Lo settings detects out-of-range measurements.

- K/J-type thermocouple selection
- Dual input
- Min/max with elapsed time, average, relative, hold functions
- Time % relative settings
- 0.05% basic accuracy to 0.2°F (0.1°C) resolution
- °F/°C selectable

INCLUDED ACCESSORIES: Users manual, 2 K-type thermocouples, batteries (installed)



TMD-53

TMD-56

Monitor and track temperatures with these multi-logging thermometers. All models feature a backlit triple-display, real-time clock with calendar and user-selectable recording intervals with easy data recall.

- Download data to PC via USB
- Data capture: 256 samples with real-time data
- Data logging: 16 sets, maximum 16,000 data points
- Thermocouple offset adjustment
- Record, max, min, max-min, average, relative zero and hold functions
- Audible alerts with Hi/Lo setting
- Resolution 0.1°F/1°F (0.1°C/1°C)

INCLUDED ACCESSORIES: USB cable and software, users manual, 2 K-type thermocouples, batteries (installed)



TMD-56



Temperature

TR200-A Temperature and Relative Humidity Data Logger

One compact unit monitors both temperature and humidity and records it on your PC using the USB interface. Amprobe software included.

- Record sample interval timing, start/stop, date, time, Hi/Lo alarm threshold, and units
- Visible LED warnings alert you to air quality problems
- IP-65 rating for dust and moisture
- Wall mountable



TR200-A



TR300 Temperature and Relative Humidity Data Logger

Wall-mountable, self-standing, or tri-pod mountable, this data logger configures to your application.

- Temperature, relative humidity, dew point or web bulb measurements with real-time date/hour stamp
- Audible and visual alerts help you monitor IAQ conditions
- Stores up to 16,000 readings
- Records data to a PC with USB cable and Amprobe software included
- Programming on-screen or from the PC



TR300

FEATURES	TR200-A	TR300
Dual Display LCD	-	•
Air Temperature Reading	14°F → 140°F (-10°C → 60°C)	-4°F → 158°F (-20°C → 70°C)
Temperature Accuracy	+/- 1°F (+/- 0.6°C)	+/- 1°F (+/- 0.6°C)
RH Reading	0.0 to 99.9%	0 to 100%
RH Accuracy	+/- 3% at 77°F (25°C)	+/- 3% from 10 - 90%
Recording	16,000	16,000
Dew Point Reading	-	•
On Screen Programmable	-	•
Software Programmable	•	•

INCLUDED ACCESSORIES: Batteries (installed), users manual, PC software CD and USB cable



★★★★★
TOP RATED
"Excellent documentation"
"Customer says it is too hot in the office. Is there really a problem? Now you can know for sure one way or the other."

- TR300 customer reviews



Environmental

PRECISION

High quality tools designed to save HVAC/R professionals time, money and keep buildings healthy. From simple, one-time checks to advanced instruments that measure humidity and airflow or check for gas leaks, Amprobe offers a complete line of tools designed specifically for environmental solutions.



Environmental

★★★★★
TOP RATED
5 Out of 5 Stars
See The Top Rated GSD600
Gas Leak Detector



MT-10

MT-10 Moisture Meter

Measure the moisture content of wallboard, wood, mortar, plaster or other building materials to identify areas of water damage or harmful mold growth. Check wood or concrete flooring before installation, wood during drying or before woodworking.

- Three-color LED indicates moisture severity
- Backlight makes display visible in dim areas

INCLUDED ACCESSORIES: Users manual, battery



★★★★★
TOP RATED

"If you build quality, this is your tool."

"I watched the Amprobe MT-10 in action when my insurance adjuster came to check out ceiling damage. The rafters without visible water damage showed moisture, the insulation that needed replacing was quickly identifiable and the wall showed the path the water took to the next floor. Wow, this will save waiting to see mold or disintegration long before permanent damage."

- MT-10 customer reviews

TMA5 Mini Vane Anemometer

This pocket-sized tool gives you an easy way to measure air flow, temperature and humidity in the HVAC systems of residential, commercial or industrial buildings.

- Measures air velocity, temperature and ambient temperature (in °F or °C), humidity, dew point, wet bulb, wind chill
- Simple, two-button operation
- Selectable wind units: mph, ft/m, Knt, m/s, km/h, BF
- Maximum wind speed display
- Data hold
- Auto power-off with disable feature
- Low battery indication
- Ergonomic design with wrist strap
- External temperature probe included

FEATURE	TMA5
Wind Speed Range	0.5 → 44.7 mph, 60 → 3937 ft/m, 0.4 → 38.8 knt, 1.1 → 20.0 m/s, 0.7 → 72.0 km/h, 1 → 8 BF
Air Temperature Range	32°F → 122°F (0°C → 50°C)
External Temperature Range	-4°F → 158°F (-20°C → 70°C)
Air RH% Range	5% → 95% RH
Wind Speed Response	averaging every 2 seconds
Temperature Response Time	60 seconds (typical)
Air RH% Response Time	60 seconds (typical)
Wind-Chill Display	•
Dew Point Temperature	•
Wet Bulb Temperature	•

INCLUDED ACCESSORIES: Battery (installed), users manual, external temperature probe, ergonomic wrist strap



TMA5

Recommended Accessories

TPK-60 K-type external temperature probe



TMA10A Anemometer with Flexible Precision Vane

The essential tool for HVAC technicians, the TMA10A measures air velocity or volume (CFM), plus temperature. Just enter surface area type for accurate airflow measurements.

- Large dual display for viewing airflow or velocity measurement including temperature
- Long flexible cord to access remote vanes
- Continuous moving average for up to 2 hours
- Air velocity average for up to 8 points
- Multi-point air flow (cfm) average
- PC interface for charting or analysis
- Min/max/average reading on a single point
- Data hold
- Auto power-off function

FUNCTION	RANGE	BEST ACCURACY
Air Velocity	0.40 → 25.00 m/s	+/- 2% of full scale
	125 → 4900 ft/min	+/- 2% of full scale
Air Flow	0.01 → 99.99 m³/sec	0 → 9.999 m
	1 ft → 9999 cfm	0 → 9.999 ft
Air Temperature °F (°C)	32°F → 122°F (0°C to 50°C)	+/- 1.5°F (0.8°C)

INCLUDED ACCESSORIES: Carrying case, battery (installed), users manual, optional PC interface for charting or analysis



★★★★★
TOP RATED

"Does all that is asked of it! It is highly accurate and results are repeatable."

- TMA10A customer review



TMA10A

Recommended Accessories

TM-SWA USB Download Cable and Software CD (See Page 83)



TMA40-A Anemometer, Relative Humidity and Temperature

With one tool, you can measure air velocity (FPM) or air volume (CFM), relative humidity, and temperature. Large digital display with backlight and flexible measurement vane makes measuring easier in difficult areas. Measures up to 99 points and logs up to 2400 measurements.

- Flexible measurement vane for accessing difficult areas
- Measures air velocity (fpm), air volume (cfm), relative humidity, and temperature
- Measure up to 99 points
- Data logging up to 2400 data points
- Optional PC interface for charting or analysis
- Large digital display with backlight

FUNCTION	RANGE	RESOLUTION	ACCURACY
Air Velocity	0.4 to 32 m/s (1.3 to 105 ft/s)	0.1 m/s (0.1 ft/s)	+/- 3%
Air Volume	0 → 99999 (cfm/cmm)	0.1 CMM - 1 CFM	+/- 3%
Temperature	-4°F → 158°F (-20°C → 70°C)	0.1°F (0.1°C)	± 0.6°C (± 1°F)
Relative Humidity	0 → 100%	0.1%	+/- 3% @ 77°F (25°C)

INCLUDED ACCESSORIES: Carrying case, battery (installed), users manual, optional PC interface for charting or analysis



★★★★★
TOP RATED

"Great tool." *"The Amprobe TMA40-A is a great tool for air flow measurement. It does Dew point, wet bulb, dry bulb, air speed, and air velocity. Great tool for troubleshooting duct problems."*

- TMA40-A customer reviews



TMA40-A

Recommended Accessories

TM-SWA USB Download Cable and Software CD (See Page 83)



TMA-21HW Hot Wire Anemometer

Hot wire anemometer technology eliminates bearings and rotating parts to make these meters durable and measurements stable and accurate. It's the simple, safe way to monitor indoor air quality and measure air flow and temperature in residential, commercial and industrial air conditioning systems.

- 4' (1.2m) telescopic wand - no ladder needed for most commercial applications
- Measures air flow volume in CFM, CMM
- Instant average, 2/3 Vmax flow measurements
- Velocity m/s, ft/min, knots, km/hr, mph
- Relative humidity and temperature measurement
- Data hold, min/max with time stamp
- Data memory and real-time function (99 sets)
- 512KB auto data-logging capacity
- USB interface
- Wet bulb and dew point
- Large backlight LCD display shows five parameters

FEATURE	TMA-21HW	BEST ACCURACY
Air Flow	0.10 m/s → 30.00 m/s 0.2 km/hr → 110.0 km/hr 10 ft/min → 6000 ft/min 0.10 knots → 59.0 knots 0.12 MPH → 68.00 MPH	+/- 3% of rdg +/-1% FS
Air Flow Volume	0.000 CFM → 999900 CFM 0.000 CMM → 999900 CMM	+/- 3%
Temperature	- 4°F → 140°F (-20°C → 60°C)	+/- 0.9°F (+/- 0.5°C)
Relative Humidity	0.0 → 100%	+/- 3%
Data-logging via USB	•	-
Wet Bulb / Dew Point	•	-

INCLUDED ACCESSORIES: Batteries (installed), hard carrying case, users manual, USB cable and PC software



RLD-1 Refrigerant Leak Detector

Troubleshoot air conditioning systems quickly and accurately with the RLD-1. State-of-the-art technology makes it easy to precisely pinpoint a wide variety of halogenated refrigerant leaks.

- Detects R-134a, R-404a, R-407c, R-410a, R-22, Freon and other refrigerants
- Sensitive gas sensor and advanced digital signal processing for high accuracy
- Built-in suction pump for precise sensor response
- Tri-color LED display and audio clearly indicate leaks
- High-Medium-Low (H/M/L) leak sensitivity selector
- Automatic zero and background compensation
- Low battery indication
- Ambient concentration reset

FEATURE	RLD-1
Detectable Gases	R-134a, R-404a, R-407c, R-410a, R-22, Freon
R-22, 134a Sensitivity	H - 3g/year, M - 15g/year, L - 30g/year
R-404a, 407c, 410a Sensitivity	H - 4g/year, M - 20g/year, L - 40g/year
Alarm Method	Buzzer, Tricolor LED bar Indicator
Power Usage	2 C size (3V dc) Alkaline Batteries
Snake Tube Length	15.5" (40 cm)

INCLUDED ACCESSORIES: Batteries (installed), users manual, carrying case, leak check bottle, AC adapter

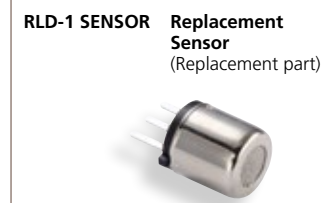


TMA-21HW



RLD-1

Recommended Accessories



★★★★★ TOP RATED

"Best tool for the job!"

In over 25 years of business, I've seen units with suspected refrigerant leaks but were too small to find. With the Amprobe RLD-1 refrigerant leak detector I can take the guess work out of finding and repairing a refrigerant leak. I recommend that if you are in the HVAC business this is a must have for every tool bag!"

- RLD-1 Customer reviews

GSD600 Gas Leak Detector

Detect dangerous methane or propane leaks that can lead to explosions and gas poisoning. With its five-level LED and audible alarms, the GSD600 helps you assess whether the area is safe or needs to be vented. The frequency of the beeping increases with the concentration of the gas, allowing you to pinpoint the source of the leak in piping or appliances. The display provides an accurate measurement of the gas present in the area.

- Detects combustible gases
- Quickly identifies and pinpoints gas leaks for closed piping systems
- Automatic calibration feature level LED alarm: >40, >80, >160, >320, and >640 ppm
- Mute function and LED alerts for quiet areas
- Built-in earphone jack (earphones not included) for loud environments
- Flexible probe to access difficult measurement areas
- Auto power-off

FEATURE	RANGE
Methane	40 ppm → 640 ppm
Propane	35 ppm → 580 ppm
Sensitivity	35 ppm (propane)

INCLUDED ACCESSORIES: Battery (installed), carrying case, users manual



GSD600

★★★★★ TOP RATED

"Accurate, affordable, and easy to use."

"This is one of the most economical tools I have used. Simple, yet accurate in use and detection."

- GSD600 customer reviews

Ultrasonic Leak Detectors

When leaks occur in pressurized systems, they emit an ultrasonic frequency humans can't hear. These ultrasonic leak detectors convert the sounds into an audible range for fast, easy leak detection.

ULD-300 Ultrasonic Leak Detector

Quickly locate gas leaks in pressurized air lines, steam lines, and refrigeration systems regardless of gas type (CFC, HFC, nitrogen and other non-combustible gases).

- Locates arcing in an electrical system
- Finds the ends of buried PVC pipes
- Parabola shield reduces background noise
- Access difficult or dangerous areas with extension tube

INCLUDED ACCESSORIES: Flexible tubing adapter, tubular extension, carrying case, power parabola, headphone, batteries (installed)



ULD-300

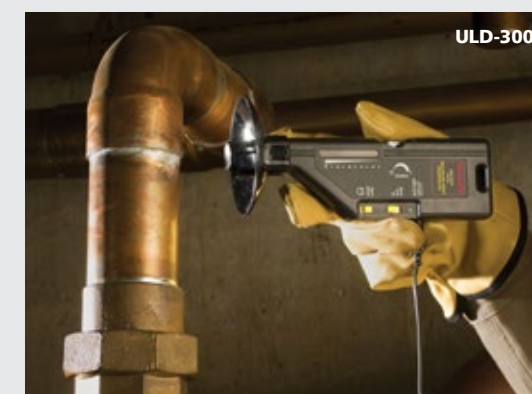
TMULD-300

TMULD-300 Ultrasonic Leak Detector with Ultrasonic Transmitter

When leaking gases are not sufficiently pressurized, use the TMULD-300. It includes an ultrasonic transmitter that creates sound waves so you can check door or trunk seals for air tightness, or windshields for water tightness.

- Same features as ULD-300
- Transmitter "pressurizes" an area with ultrasonic sound

INCLUDED ACCESSORIES: Flexible tubing adapter, tubular extension, carrying case, power parabola, headphone, batteries (installed), UT-300 transmitter



ULD-300

★★★★★ TOP RATED

"Great product."

"This tool paid for itself many times over. I have found leaks large and small inside walls, on evaporator coils, condensers and water lines. I've loaned it to colleagues who purchased your product immediately after using mine. These tools lead the industry in leak detection through its sensitivity and ability to detect negative or positive pressure."

- TMULD-300, Customer reviews

Recommended Accessories

- UT-300** Ultrasonic Transmitter (ULD-300) (Replacement part)
- ULD-300-KIT1** Adapter Kit For ULD-300:
 - TEA-1 Flexible tubing adapter
 - PB-1 power parabola
 - HP-1 headphone
 - TE-1 tubular extension (Replacement part)





CM-100

CM-100 Carbon Monoxide Meter

This compact meter measures the presence of carbon monoxide and warns you when it exceeds safe levels.

- Alarm is preset to 25 ppm to warn about possible danger
- Adjustable CO warning levels: 25, 30, 35, 45, 50, 70, 100 and 200 ppm
- Backlight for viewing in dim areas
- Auto power-off to save batteries
- Self-test feature
- Dual digital backlit display

FEATURE	CM-100
Range	0 ppm → 999 ppm
Resolution	1 ppm

INCLUDED ACCESSORIES: Users manual, batteries (installed)



CO2-100

CO2-100 Handheld Carbon Monoxide Meter

Get instant feedback on carbon monoxide levels up to 9,999 ppm, while you check the air quality compliance of hospitals, schools, offices, or production floors.

- Large, easy-to-read triple LCD display of CO2, temperature and relative humidity
- Selectable display of dew point and wet bulb
- High performance low-drift sensor designed with NDIR (Non-Dispersive Infrared) waveguide technology
- Backlight for working in dim areas
- TWA (time-weighted average) display for an 8-hour period
- 15 minutes STEL (short-term exposure limit) value
- Audible alarm threshold setting by carbon dioxide level
- Data hold, min/max, average functions
- Long term drift compensation for accurate readings

INCLUDED ACCESSORIES: Batteries (installed), users manual, carrying case



FEATURE	CO2-100	CO2-200
CO2	0 → 9999 ppm	0 → 9999 ppm
Temperature Range	14°F → 140°F (-10°C → 60°C)	14°F → 140°F (-10°C → 60°C)
RH Range	0% → 95%	0% → 95%
DP (Dew Point Temp.)	-4°F → 139.8°F (-20°C → 59.9°C)	-4°F → 139.8°F (-20°C → 59.9°C)
WB (Wet Bulb Temp.)	24.8°F → 139.8°F (-5.0°C → 59.9°C)	23°F → 139.8°F (-5.0°C → 59.9°C)
Resolution	1 ppm - CO ₂ concentration, 0.1°C / °F - Temp, 0.1%RH - Humidity	1 ppm - CO ₂ concentration, 0.1°C / °F - Temp, 0.1%RH - Humidity

CO2-200 Wall-Mounted Carbon Monoxide Meter

Monitor critical, environmentally controlled areas such as laboratories and production facilities with this permanently mounted air quality meter.

- CO2 measurements up to 9,999 ppm, temperature, relative humidity, dew point and wet bulb
- Audible alarm threshold setting for carbon dioxide levels with output drive relay to control air flow system
- High performance low drift sensor designed with NDIR (Non-Dispersive Infrared) wave guide technology with automatic back ground calibration
- Recording of min, max and average values with recall function
- Data hold

INCLUDED ACCESSORIES: Batteries (installed), carrying case, power adapter 110-240 V ac, users manual



TACH-10 and TACH20 Combo Tachometers

Measure rotational speed of motors, conveyor belts and other moving or rotating systems with these handheld tachometers. The TACH20, our top-of-the-line tachometer includes six adapters, a surface speed wheel for contact RPM measurement and an infrared beam for non-contact measurements. The TACH-10 is an economical, universal tachometer that measures rotational and surface speed using both contact and non-contact methods.

- Built-in memory function automatically stores maximum, minimum, and average values as well as the last measurement displayed
- Easy to select units and mode functions
- Select RPM using infrared beam or adapter: m/min, m/sec, ft/min, ft/sec, in/min, m, ft, and in.
- Auto power-off function

FEATURE	TACH-10	TACH20
Rotation (Non-Contact)	10.0 rpm → 99999 rpm	1 min → 99999 min
Rotation (Contact)	10.0 rpm → 19999 rpm	1 min → 19999 min
Surface Speed (Contact)	1.0000 → 9999.9 m/min	0.10 → 1999 m/min
	3.0000 → 30,000 ft/min	0.40 → 6550 ft/min
	1.0 → 10,000 yd/min	4.00 → 78700 in/min
		0.10 → 33.30 m/sec
		0.10 → 109 ft/sec

INCLUDED ACCESSORIES: Batteries (installed), users manual, reflective tape, carrying case, adapters



TACH-10



TACH20

Recommended Accessories

- TACH-20-KIT1** Tip, Wheel, Shaft, Funnel and Reflective Tape (TACH20 Replacement part)
- TACH-20-ADPT** Adaptor For TACH20 (Replacement part)
- TACH-10-KIT1** Convex / Concave Tip, Reflective Tape (TACH-10 Replacement part)

LM-100 and LM-120 Light Meters

These portable, easy-to-use digital light meters measure interior illumination levels from fluorescent, metal halide, high-pressure sodium or incandescent sources. Switch off, reduce or increase the output level of lighting fixtures. Reduce the energy burden of the building by significantly increasing the efficiency of its lighting system.

- Measure in lux or footcandles, front panel switchable
- Simple, one-handed operation
- Silicon photodiode sensor and filter for accuracy and high-resolution
- Analog dc voltage output to operate with chart recorder or data logger (LM-120 only)
- Zero adjustment (LM-120 only)
- Auto power-off to save battery life

FEATURES	LM-100	LM-120
Ranging	Manual	Automatic / Manual
Illumination Sensor	Silicon photodiode and filter	
Range Lux	20, 200, 2000, 20000, 200000	
Range Footcandles	20, 200, 2000, 20000	
Calibration Point	2854 °K Cosine Angular corrected per JIS C 1609:1993 and CNS 5119 general A class	
Data	Data hold	Data hold, min/max

INCLUDED ACCESSORIES: Batteries (installed), carrying case, users manual



LM-100

★★★★★
TOP RATED
"Excellent meter for lighting uses."

"I've found this meter's accuracy is as advertised at +/- 3%, its consistency under flickering AC driven LEDs (120Hz) is actually better than higher end meters that are unable to compute the samples accurately. Overall, an impressive meter at a great price, that I use for rough photometric tests as well as general illumination measurements."

- LM-200LED customer reviews

LM-200LED Light Meter

This professional tester accurately measures light output of LED sources for all visible light ranges.

- Lux or footcandle measurement units, user selectable
- Data hold
- Max recording captures highest light measurement
- Measuring lights source include all visible ranges
- Accurate measurements with spectral response close to CIE luminous spectral efficiency
- Angled light cosine correction
- Extendable wire (approximately 5' (1.5 m))
- Measurements according to JISC1609:1993 and CNS 5119 general A class specifications

FEATURE	LM-200LED	BEST ACCURACY
LED Light Measurement	200, 2,000, 20,000, 200,000 lux	+/- 3% (Calibrated to standard incandescent lamp 2856° K) and corrected LED day white -light spectrum.
	20, 200, 2,000, 20,000 footcandle	

INCLUDED ACCESSORIES: Users manual, battery (installed), carrying case



LM-200LED

Environmental

SM-10 and SM-20-A Sound Meters

These sound meters meet the measurement needs of safety engineers, health, industrial and safety offices as well as quality control. Use them to check compliance with safety regulations and perform acoustic analysis. They use two different weighting filters required by the IEC 651 and ANSI S1.4 Type 2 for audio filtering.

- A-weighting for general noise sound level
- C-weighting for measuring sound level of acoustic material control in various environments
- Display with 0.1dB steps on a 4-digit LCD
- Slow (1 sec) and fast (125ms) response
- settings to check peak and average noise levels
- PC interfaces (SM-20-A only)

FEATURES	SM-10	SM-20-A
Microphone	1/2" Electret condenser microphone	
Standard Applied	IEC 651 Type 2, ANSI 1.4 Type 2	
Dynamic Range	50 dB	
Time Weighting	FAST (125 mS), SLOW (1 sec)	
Frequency Range	31.5 Hz → 8 kHz	
Measuring Level Range (Auto Range)	A-Weighting: 30 dB → 130 dB C-Weighting: 35 dB → 130 dB	
Data	Data hold	Min/max
Internal Memory	-	14,000 records

INCLUDED ACCESSORIES: Carrying case, users manual, battery (installed), USB cable download and software CD (SM-20-A only)



SM-20-A

★★★★★
TOP RATED

"I work in a manufacturing plant and regularly check sound levels to make sure we are using the right hearing protection. We have been using the Amprobe SM-20-A Sound Meter for its ease of use and simple operations, and quick and easy testing. Love it and recommend it to everyone."

- SM-20-A customer reviews



SM-CAL1 Sound Meter Calibrator

This instrument generates the fixed sound level signals needed to calibrate sound level meters.

- Two output levels: 94 dB and 114 dB
- Output frequency: 1000Hz
- Fits 0.5" microphones
- Easy one-handed operation
- Low battery indicator
- CE: conforms to ANSI S1.40 – 1984 and IEC942 – 1988 Class 2

INCLUDED ACCESSORIES: Battery (installed), users manual



SM-CAL1

Solar Energy and Battery Testers

GREEN

You need to be ready to test and troubleshoot new technologies as they emerge and alternative energy is the hottest trend. The Amprobe solar solution suite equips you to install, maintain and troubleshoot solar systems as well as analyzing the energy efficiency of solar panels, water heaters and windows. Use the Amprobe line of battery testers not only for green energy applications but also to test UPS and battery back-up systems.



TOP RATED

5 Out of 5 Stars

See The Top Rated SOLAR-100 Solar Power Meter





Solar-100

SOLAR-100 Power Meter

Optimize the placement of solar systems and analyze window efficiency with the SOLAR-100. Measure solar output and calculate overall energy and efficiency.

- Windows performance testing: calculate and verify heating or heat reduction caused by direct sunlight
- Research the location of solar panels or solar water heaters
- Measures solar power and transmission
- Power mode measures incident solar radiation
- Transmission mode calculates the percentage of solar power transmission through materials such as windows
- Convenient display with remote sensor technology
- Selectable measurement units (W/m² or BTU/ft²xh)
- Min/max function identifies locations with maximum or minimum power
- Also useful for physics and optical laboratories, meteorology, agriculture

FEATURE	SOLAR-100
Solar Power	Up to 2000 W/m ² , 634 BTU/(ft ² xh)
Max/Min	•
Data Hold	•

INCLUDED ACCESSORIES: Battery (installed), carrying case, users manual



★★★★★
TOP RATED

"A great instrument."
"This is an excellent device for quick measurements of irradiance out in the field. I was surprised that it can measure BTUs as well as headlight brightness and window tint."

It can also demonstrate the advantages of tracking and the effects of cloud cover. Great value for the money."

- SOLAR-100 customer reviews

SOLAR-600 Solar Analyzer

Install, maintain, troubleshoot and evaluate the efficiency of solar panels with this these professional analyzers. The SOLAR-600 also offers real-time data logging and PC downloads for further analysis.

- Determine the proper inverter size and optimum power output position of panels
- Identify broken or worn-out cells
- I-V curve test with cursor for solar cells
- Maximum solar power (Pmax) search by auto-scan
- Maximum voltage (Vmaxp) at Pmax
- Maximum current (Imaxp) at Pmax
- Voltage at open circuit (Vopen)
- Current at short circuit (Ishort)
- I-V curve with cursor
- Calculation of panel efficiency (%)
- Manual single point test
- Real time datalogging and PC download

FEATURE	SOLAR-600
DC Voltage:	0.000 V → 9.999 V, 10.00 V → 60.00 V
DC Current:	0.01A → 9.99 A, 10.0 A → 12.0 A
DC Current Simulation	0.01 A → 9.99 A, 10 A → 12 A
Power	0 W → 720 W
Efficiency	•
Scan delay	0 mS → 3000 mS
Alarm	•
Solar Panel Area	0.001 m ² → 9999 m ²
Standard Light Source	10 W/m ² → 1000 W/m ²
Data Storage Memory	99 records
Data Logging	•

INCLUDED ACCESSORIES: Users manual, rechargeable battery pack (installed), ac adapter, USB cable and software CD, test leads, carrying case



BAT-200 Battery Testers

Battery failure is one of the most common causes for sensor or instrument failure. This portable universal battery tester makes checking batteries simple.

- Easy-to-read color-coded display with "Good", "Low" and "Replace/Recharge" indicators
- Tests standard and rechargeable batteries: 9V, AA, AAA, C, D, 1.5V Button Type
- Compact design
- Ergonomic battery holder

FEATURE	BAT-200
Battery Type	9V, AA, AAA, C, D, 1.5V Button Type
Analog Scale	•

INCLUDED ACCESSORIES: Users manual



BAT-200

BAT-500 Battery Tester

Here's the quick, accurate way to test back-up batteries and UPS systems without taking batteries off line.

- Comparator function to quickly access battery condition as Pass, Warning or Fail
- Store up to 99 user program able settings for quick battery diagnostics
- Test battery impedance to calculate its true life
- Works with most batteries: compact storage batteries, alkaline and lead-acid up to 500 AH
- Resistance measurement up to 40 ohms and voltage up to 40 V
- Simultaneously measure battery resistance and voltage
- Compact and lightweight
- For trending/life cycle analysis download test results to a PC

FEATURE	BAT-500
Maximum Battery Capacity	Up to 500 amp hours
Battery Type	Alkaline, Nickel-Metal Hydride (NiMH), Nickel-Cadmium (NiCd), Lithium-ion (Li-ion) and lead-acid batteries
DC Voltage	4.000 V, 40.00 V
Impedance	40 mΩ, 400 mΩ, 4 Ω, 40 Ω
Data Capture Memory	500 data sets
Data Logging Memory	9600 data sets
PC Download	•

INCLUDED ACCESSORIES: Users manual, software manual, batteries, ac adaptor, RS232C (to USB Bridge) cable, software CD, kelvin clips



BAT-500

Recommended Accessories

SOLAR-BAT1 Rechargeable Lithium Battery SOLAR-600 (Replacement accessory)



CR50A Capacitance Tester

Inspect and verify components for quality control by quickly checking circuits with this full-range capacitance and resistance meter.

- Dual zero adjustments pots to null strays and test leads
- Special "low ohms" range
- "Zero adjust" pots for low ohms and capacitance ranges
- Low battery indication

LCR55A Inductance, Capacitance and Resistance Tester

The ultimate electronic component verifier measures inductance, capacitance, resistance, transistors, diodes and microwave diodes.

- Plug-in test slots and test leads with threaded alligator clips for precision testing
- Data hold and max hold
- "Zero adjust" pot for ohms
- Low battery indication
- Auto power-off

FEATURE	CR50A	LCR55A
Resistance	20 Ω, 200 Ω, 2 kΩ, 20 kΩ, 200 kΩ, 2 MΩ, 20 MΩ	20 Ω, 200 Ω, 2 kΩ, 20 kΩ, 2 MΩ, 20 MΩ
Capacitance	200 pF, 2000 pF, 2 μF, 20 μF, 200 μF, 2 mF, 20 mF	200 pF, 2000 pF, 2 μF, 20 μF, 200 μF, 2 mF
Inductance	-	200 μH, 2 mH, 200 mH, 200 H
Transistors	-	Hfe, I _{ceo} (NPN, PNP)
Diodes	•	Std (3 V) & microwave oven (8 V)
Continuity test		•

INCLUDED ACCESSORIES: Users manual, test leads with alligator clips, battery (installed)



CR50A



LCR55A

★★★★★
TOP RATED
"Very reliable."

"We work in the HVAC industry and capacitors are a common issue. The Amprobe LCR55A Capacitance Tester has been a great investment and time saver. A quick check and record has identified weak capacitors and saved us from costly call backs."

- LCR55A customer reviews

R-115S Remcon Momentary Switch Relay (3-wire)
RC-120S Remcon Closet Light Relay (2-wire)

When you need low-voltage control circuits for safe operation in industrial and process control environments, choose these low-voltage relays with built-in transformers. Each unit operates independently, so you can install one relay and operate it with as many switches as needed or control multiple relays with a single switch.

- Uses light 22 gauge wire, saving the time and expense of pulling Romex or armored cable
- Simplifies wiring - no need to wire back to separate low voltage transformers
- Operates silently so you can install relays at the fixture instead of at a remote location

FEATURE	R-115S	RC-120S
AC Voltage	105 V → 125 V	
AC Current	Up to 6.5 A (1/4 HP max motor load at 120 V)	
Frequency	60 Hz	
Safe Control Switching, Maximum	10 V DC 10 milliamps	



R-115S



RC-120S



Accessories

OPTIMIZE

Get the most out of your Amprobe tools with a wide range of carrying cases, probes, current transducers, test leads, software and more. Please review your owners manual or visit www.Amprobe.com for complete details on the right accessories to support each test tool.



Test Leads

DL243D

48" long silicone lead wires, probe tips, alligator clips, spade lugs, fold-out carrying case



DL243D

DL248D

Same as DL243D plus spring loaded crimp tips and red tip length extender



DL248D

TL35B

Standard leads: 40" PVC insulated lead with standard tips plus threaded large alligator clips, CE approved alligator clips, 0.6" jaw, shrouded 90° banana plugs, one red and one black leads and clips



TL35B

TL1500

Heavy duty test leads
CAT IV / 1000 V, 1500 V MAX



TL1500

Line Splitter

ELS2A, AC Line Splitter

- Measures load current without splitting line cord
- Two measurement points, X1 and X10 for increased sensitivity
- Built-in voltage measurement jacks
- 115 V, 15 A



ELS2A

Current Clamps

CT235A

- AC/DC current clamp, 1000 A (50/10 kHz), mV output, 1.2" max conductor

CT237B

- AC/DC current clamp, 200 A (50/10 kHz), mV output, .75" max conductor

CT238A

- AC/DC current clamp, 20 A (50/20 kHz) Low current version



Thermocouple

TPK-59, Thermocouple

- Accessory for multimeters and clamp-ons with temperature input
- Measures temperature from -50°F - 600°F
- Plugs directly to a meter without additional adapters



	CC-ACDC	DC205C	CC-MEG	SV-U	VC221B	VC3A	VC30A	CC-DM-III	CC-300 PRO
30XR-A					•				
33XR-A					•				
34XR-A					•				
37XR-A					•				
38XR-A					•				
5XP-A					•				
15XP-B					•				
35XP-A					•				
AC40C							•		
AC50A							•		
AC68C	•								
AC75B	•								
ACD-50NAV	•								
ACD-51NAV	•								
ACDC-52NAV	•								
ACD-53NAV	•								
ACDC-54NAV	•								
ACD-20SW	•								
ACD-21SW	•								
ACD-22SW	•								
ACD-23SW	•								
ACD-10 PLUS							•		
ACD-10 TRMS-PLUS							•		
ACD-14 PLUS							•		
ACD-14 TRMS-PLUS							•		
ACD-15 TRMS-PRO				•					
ACD-16 TRMS-PRO				•					
ACD-41PQ				•					
ACD-45PQ							•		
ACD-6 PRO				•					
ACDC-100				•					
ACDC-100 TRMS				•					
ACD-3300 IND	•								
ACDC-3400 IND	•								
ACDC-400				•					
AD40B							•		
AM-140-A					•				
AM-160-A					•				
AM-220							•		
AM-240							•		
AM-250					•				
AM-270					•				
AM-500							•		
AM-510					•				
AM-520					•				
AM-530					•				
AM-560					•				
AM-570					•				
AM8C					•				
CR50A							•		
DGC-1000A	•								
DM73C				•					
DM78C				•					
DM7C					•				
DM9C					•				
HD110C		•			•				
HD160C		•			•				
INSP-3					•				
LCR55A					•				
LH41A							•		
PM51A							•		
PM55A							•		
RS-1007	•								
RS-3 PRO	•								
TIC 300 PRO								•	
GP-2A			•						
DM III Multitest								•	
AMB-45			•						



CC-ACDC
Soft Pouch Zippered Carrying Case
11.5 x 4.5 x 2.8"
(292 x 114 x 70 mm)



DC205C
Deluxe Heavy Duty Carrying Case
9.6 x 4.7 x 4.3"
(244 x 119 x 109 mm)



CC-MEG
Soft Carrying Case
10 x 8.5 x 3.25"
(254 x 216 x 89 mm)



SV-U
Soft Pouch Zippered Carrying Case
8.5 x 3.0 x 2.5"
(216 x 76 x 64 mm)



VC221B
Padded Vinyl Carrying Case
8.5 x 4.5 x 2.5"
(216 x 114 x 64 mm)



VC3A
Rugged zippered Carrying Case
4.5 x 2.2 x .4"
(114 x 56 x 10mm)



VC30A
Vinyl Carrying Case
7.5 x 3.4 x 1.5"
(191 x 86 x 38 m)



CC-DM-III
Deluxe Heavy Duty Carrying Case
18.3 x 15.0 x 7.3"
(465 x 381 x 184 mm)



CC-300 PRO
Leather Carrying Case
10.84 x 4.20 x 2.40"
(275 x 107 x 70 mm)

Product Fuse Directory

MODEL	PART NUMBER	FUSE TYPE
RS-1007	FP500	0.5A/1000V, 6.3X32mm
RS-3 PRO	FP500	0.5A/1000V, 6.3X32mm
AM-250	FP650	630mA/500V, 6X32mm
	FA-12.5A/500V	12.5A/500V, 6X32mm
AM-270	FP160	10A/600V, 10X38mm
	FUSE-1A	1A/600V, 10X38mm
AM-500	FA-0.5A/700V	0.5A/700V, 6.3X32mm
	FP400	10A/600V, 6.3X25 mm
AM-510	FP500	0.5A/1000V, 6.3X32mm
	FP400	10A/600V, 6.3X25 mm
AM-520	FP500	0.5A/1000V, 6.3X32mm
	FP410	11A/1000V, 10X38mm
AM-530	FP500	0.5A/1000V, 6.3X32mm
	FP410	11A/1000V, 10X38mm
AM-560	FP500	0.5A/1000V, 6.3X32mm
	FP410	11A/1000V, 10X38mm
AM-570	FP500	0.5A/1000V, 6.3X32mm
	FP410	11A/1000V, 10X38mm
AM-140-A	FP160	10A/600V, 10X38mm
	FUSE-1A	1A/600V, 10X38mm
AM-160-A	FP412	0.44A/1000V, 10X38mm
	FP410	11A/1000V, 10X38mm
AM-220	5X20-250.5	0.5A/250V, 5X20mm
	6X32-250V10A	10A/250V, 6X32mm
AM-240	5X20-250.5	0.5A/250V, 5X20mm
	6X32-250V10A	10A/250V, 6X32mm
30XR-A	FP160	10A/600V, 10X38mm
	FP375	0.25A/700V, 6.3X32mm
33XR-A	FP100	10A/1000V, 10X3 8mm
	FP300	0.315A/1000V, 6.3X32mm
34XR-A	FP100	10A/1000V, 10X38mm
	FP300	0.315A/1000V, 6.3X32mm
37XR-A	FP100	10A/1000V, 10X38mm
	FP500	0.5A/1000V, 6.3X32mm
38XR-A	FP100	10A/1000V, 10X38mm
	FP500	0.5A/1000V, 6.3X32mm
5XP-A	FP300	0.315A/1000V, 6.3X32mm
15XP-B	FP200	2A/1000V, 6.3X32mm
35XP-A	FP200	2A/1000V, 6.3X32mm
HD110C	FP700	2A/1500V, 8X65mm
HD160C	FP700	2A/1500V, 8X65mm
DM7C	FP900	200mA / 700V, 6.3X32mm
DM9C	FA-6X32/.63	0.63A/500V, 6X32mm
	FP540	10A/600V, 6.3X32 mm
PRM-4	FP900	200mA/700V, 6.3X32mm
AMB-45	FA-0.5A/700V	0.5A/700V, 6.3X32mm
S2600	380.25-6X32	0.25A/380V, 6X32mm
T-100,T-300 (CT-100, 326B)	3AG-312.250	0.25A/250V, 6.3X32mm
T2200 (AT-200X)	2502-6X32	2A/250V, 6X32mm
T-4000 (AT-400X)	FA6X46MM	0.25A/1000V, 6X46mm
X1000 (AT1000)	380.25-6X32	0.25A/380V, 6X32mm
CR50A	FP125	0.1A/250V, 5X20mm
LCR55A	FP125	0.1A/250V, 5X20mm
AU92	FP520	0.5V/500V, 6.3X32 mm
	FP540	10A/600V, 6.3X32 mm
AM8C	FP150	200mA/250V

Software and Cables

Transfer measurement data to your computer with these kits.

For complete details on Amprobe software and to download the latest versions, please visit www.amprobe.com/softwaredownloads.html

Download Suite Software

Download Suite is a free software package compatible with most of the Amprobe instruments with download capabilities. Enjoy the benefits of this powerful software package for a wide selection of Amprobe megohmmeters, ground resistance testers, multitesters, and power quality recorders.

- Install software once and use it with all supported Amprobe products
- All instruments share the same file format. You can open files recorded by you, other people, or the Amprobe instruments right on your PC.
- Download Suite automatically checks your version for upgrades and keeps your version current.
- Windows7 compatible

USB-KIT2

- Download software with connection cable for Amprobe clamp meters

USB-KIT3

- Download software with connection cable for Amprobe multimeters

RS-USB, USB to RS-232 Adapter

- Converts the USB port of a PC to RS-232
- Supports Windows 95 (OSR2X), 98, 2000, ME, XP, Vista, Mac 8.6 and higher
- Works with Amprobe instruments with download capabilities
- Works with many other products with USB ports, including cameras, Palm Pilot, card readers, mouse, security systems, etc.
- Frees up the serial port for other uses

TM-SWA, USB Cable and Software

- Allows for real-time data downloads from TMA10A and TMD90A
- Records two channels simultaneously



MODEL #	PRODUCT #	PG #
15XP-B	3534088	*
30XR-A	2727774	*
33XR-A	2727788	*
34XR-A	2727795	*
35XP-A	2727849	*
37XR-A	2727808	16
38XR-A	2727824	16
5XP-A	2727851	*
AC50A	3033017	8
AC68C	2727919	*
AC75B	2727885	*
ACD-10 PLUS	3037808	6
ACD-10 TRMS-PLUS	3037813	*
ACD-14 PLUS	3086905	6
ACD-14 TRMS-PLUS	3086910	6
ACD-15 TRMS-PRO	2730690	9
ACD-16 TRMS-PRO	2730713	*
ACD-205W	3472723	6
ACD-215W	3472738	*
ACD-225W	3804934	*
ACD-235W	3804934	6
ACD-3300 IND	3434877	*
ACD-41PQ	2730760	*
ACD-45PQ	3730013	*
ACD-50NAV	3729945	5
ACD-51NAV	3729950	*
ACD-53NAV	3729977	*
ACD-6 PRO	2730785	8
ACDC-100	2740452	9
ACDC-100 TRMS	2740465	9
ACDC-3400 IND	3434889	7
ACDC-400	2730810	8
ACDC-52NAV	3729961	5
ACDC-54NAV	3729989	5
ACF-3000DM-A	2732395	*
AM-140-A	3730024	*
AM-160-A	3730036	*
AM-250	3524986	*
AM-270	3524999	*
AM-500	4018624	18
AM-510	4018636	14
AM-520	4018649	14
AM-530	4018651	14
AM-560	4210333	14
AM-570	4210340	14
AMB-110	3730335	35
AMB-2	2730984	*
AMB-25	2730991	34
AMB-3	2731008	36
AMB-45	2731024	34
AMB-50	3730288	35
AMB-55	3730320	35
AMC-2	2731060	36
AMC-3	2731072	36
AMC-4	2731085	36
AT-1000	2731097	30
AT-2004-A	4416090	30
AT-2005-A	4416104	30
AT-3500	3435058	28
AT-4001-A	4416052	29
AT-4003-A	4416065	29

MODEL #	PRODUCT #	PG #
AT-4004-A	4416076	29
AT-4005-A	4416083	29
BAT-200	3473003	57
BAT-500	3474946	57
BT-120	3472789	*
BT-250	2731177	31
CM100	3311826	52
CO2-100	3475094	52
CO2-200	3475100	52
CR50A	3026965	58
CT-100	2731189	31
CT-326-C	4416119	31
CT235A	3026809	60
CT237B	3511514	60
CT238A	3026827	60
DGC-1000A	2731217	37
DL243D	3026853	60
DL248D	3026866	60
DM-III MULTITEST	2731242	38
DM-III MULTITEST F	2731256	38
DM73C	2727739	18
DM78C	3156830	*
ECB50A	3016966	*
ELS2A	3027072	9/60
GP-2A	4129187	37
GSD600	3311832	51
HD110C	2670779	17
HD160C	2670787	17
INSP-3	3503207	23
IR-450	4227490	42
IR608A	3015690	42
IR-710	4109553	40
IR-712	4109566	*
IR-720	4109575	40
IR-730	4109582	40
IR-750	4109594	40
LAN-1	3052401	26
LCR55A	3026976	58
LH41A	3030898	8
LM-100	3052348	53
LM-120	3052353	53
LM-200LED	3730217	53
LT-10	4222120	22
MAN15	3474993	*
MAN30	3475009	*
MANO2-A	3477279	*
MO-100	3474954	24
MT-10	3503178	48
MTL-90B	2733170	*
PM51A	2727700	18
PM55A	2727721	18
PRM-4	3239635	24
PY-1A	3503229	26
R-115S	2734454	58
RC-120S	2731504	58
RLD-1	3474968	50
RS-1007 PRO	3467476	7
RS-3 PRO	3467465	*
SM-10	3052366	54
SM-20-A	3477333	54
SM-CAL1	3052382	54

MODEL #	PRODUCT #	PG #
SOLAR-100	3474979	56
SOLAR-600	3730242	56
ST-101B	3016975	25
ST-102B	4160817	25
TACH-10	3730008	53
TACH20	3311961	53
TH-1	3311871	43
TH-3	3027060	43
THWD-3	3033042	43
THWD-5	3311803	43
TIC 300 PRO	3467441	21
TIC 410A	3107749	21
TL1500	2696277	60
TL245A	3068215	*
TL35B	3068232	60
TL36A	3034444	*
TMA-21HW	3730239	50
TMA10A	2817785	49
TMA40-A	3477287	49
TMA5	3503169	48
TMD-50	3730150	45
TMD-53	3730085	53
TMD-56	3730138	56
TMD-10	3052394	*
TMD90A	2817797	*
TMULD-300	2731543	51
TPK-59	2733660	60
TR200-A	3477302	46
TR300	3311844	46
TX900	3390352	*
ULD-300	2734431	51
VP-1000SB	4160821	25
VP-440	2734332	25

* This product is available for order but not in the catalog. For detailed specifications go to www.Amprobe.com

2014

AMPROBE®

HARD AT WORK SINCE 1948.



TOP RATED

Every year, Amprobe introduces innovative tools that help you work smarter, faster and make every dollar count. These are just a few examples of products you'll find inside the 2014 catalog.

- **LT-10 Lamp Tester:**
Troubleshoot bulbs, pins and voltage with a single pocket-sized tool.
- **IR-700 Infrared Thermometer Series:**
Five highly accurate IR thermometers with up to 50:1 distance to spot ratio.
- **AM-500 Digital Multimeter Series:**
Six best in class multimeters for every application.
- **Navigator™ Clamp Series:**
Rugged design and built-in power quality trouble-shooting capabilities.
- **IR-450 Pocket Thermometer:**
3-in-1 Infrared thermometer, laser pointer and flashlight.
- **TIC 300 PRO Non-Contact High Voltage Detector:**
The new standard in high voltage detection.
- **INSP-3 Wiring Inspector:**
Troubleshoot wiring issues in seconds.



www.Amprobe.com

Visit our web site for full data sheets, application notes, software downloads, special promotions and more.

Amprobe®

www.Amprobe.com
info@amprobe.com
Everett, WA 98203
tel: 877-AMPROBE (267-7623)

Amprobe® Europe

Beha-Amprobe GmbH
www.Amprobe.de
info@amprobe.de
In den Engematten 14
79268 Glottertal, Germany
tel: +49 (0) 7684 8009 - 0

© 2014 Amprobe Test Tools
All rights reserved.
Printed in the U.S.A.
2765603_1

Specifications subject to change without notice.