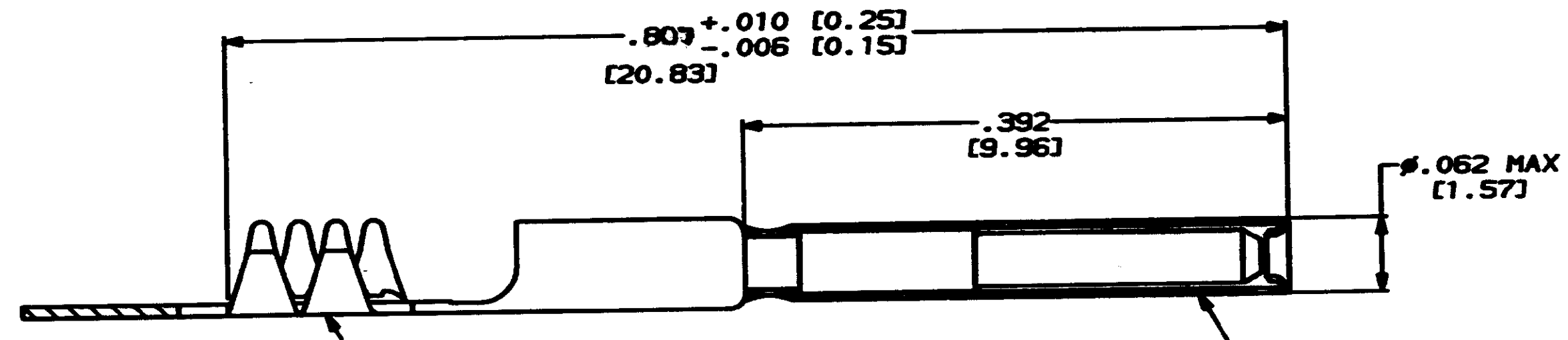
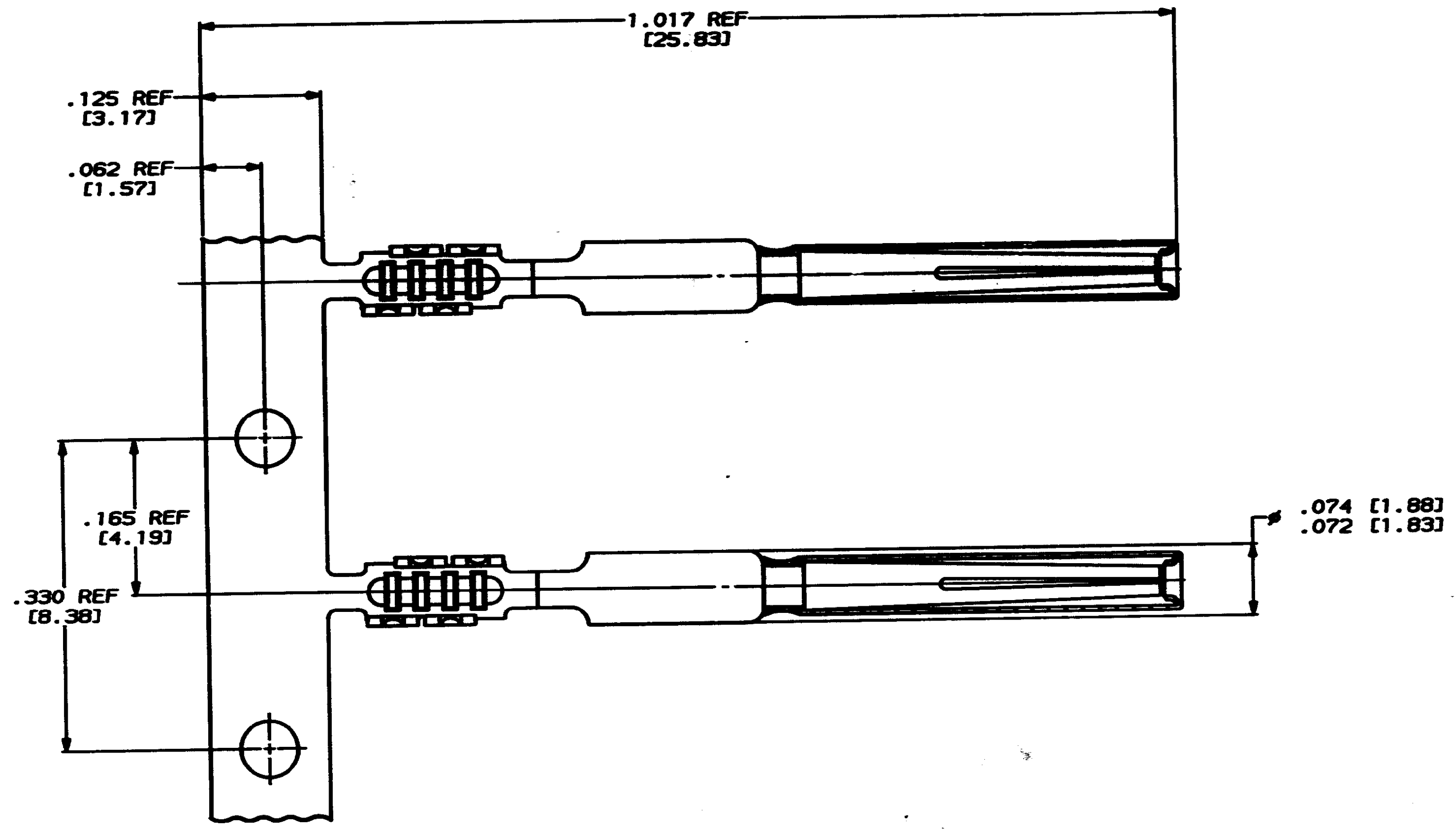


REVISIONS									
REV	LOG	REV	DATE	DESCRIPTION	DATE	APPD			
0	DF	A0		RELEASED PER NPR 90-0414 T.S.					



CONTACT MATERIAL: COPPER ALLOY PER QQ-B-750 FINISH: SELECTIVELY PLATED GOLD .000030 MIN THICK ON MATING END WITH REMAINDER OF CONTACT GOLD FLASHED .000005 MIN THICK WITH ENTIRE CONTACT NICKEL UNDERPLATED .000030 MIN THICK

CONTACT SLEEVE MATERIAL: STAINLESS STEEL PER ASTM-A-582 FINISH: PASSIVATED PER QQ-P-35

447548-1
PART NO

DO NOT SCALE PRINT. UNLESS SPECIFIED DIMENSIONS IN INCHES (mm) TOLERANCES ON: 2 PLC DEC ± 3 PLC DEC ± .005 (0.13) ANGLES ±	DR 4-12-81 T. SUREY	AMP AMP Incorporated Harrisburg, PA 17105-3608	NAME		
	CHK <i>Edward J. Howard 4-12-81</i>		SOCKET CONTACT ASSEMBLY, ARINC404, SIZE 22, FFC		
SEE CALLOUTS	APPD <i>Edward J. Howard 4-12-81</i>	PRODUCT SPEC	SIZE	CAGE CODE	DRAWING NO
FINISH	APPLICATION SPEC	WEIGHT	D	00779	447548
SEE CALLOUTS			SCALE 10:1		SHEET 1 OF 1