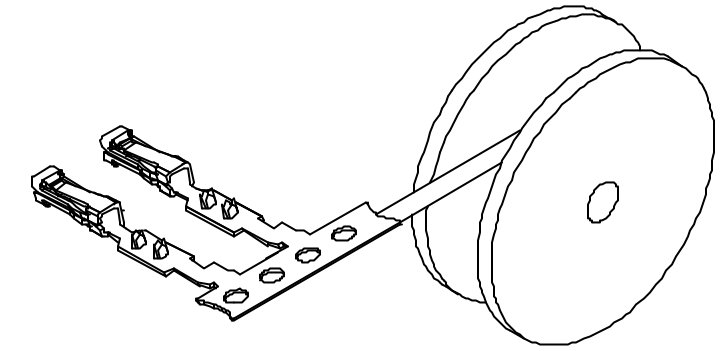
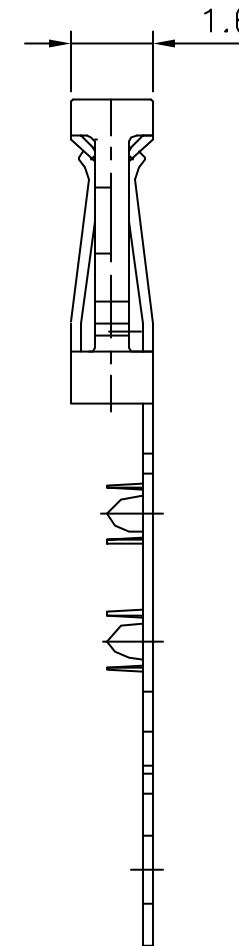
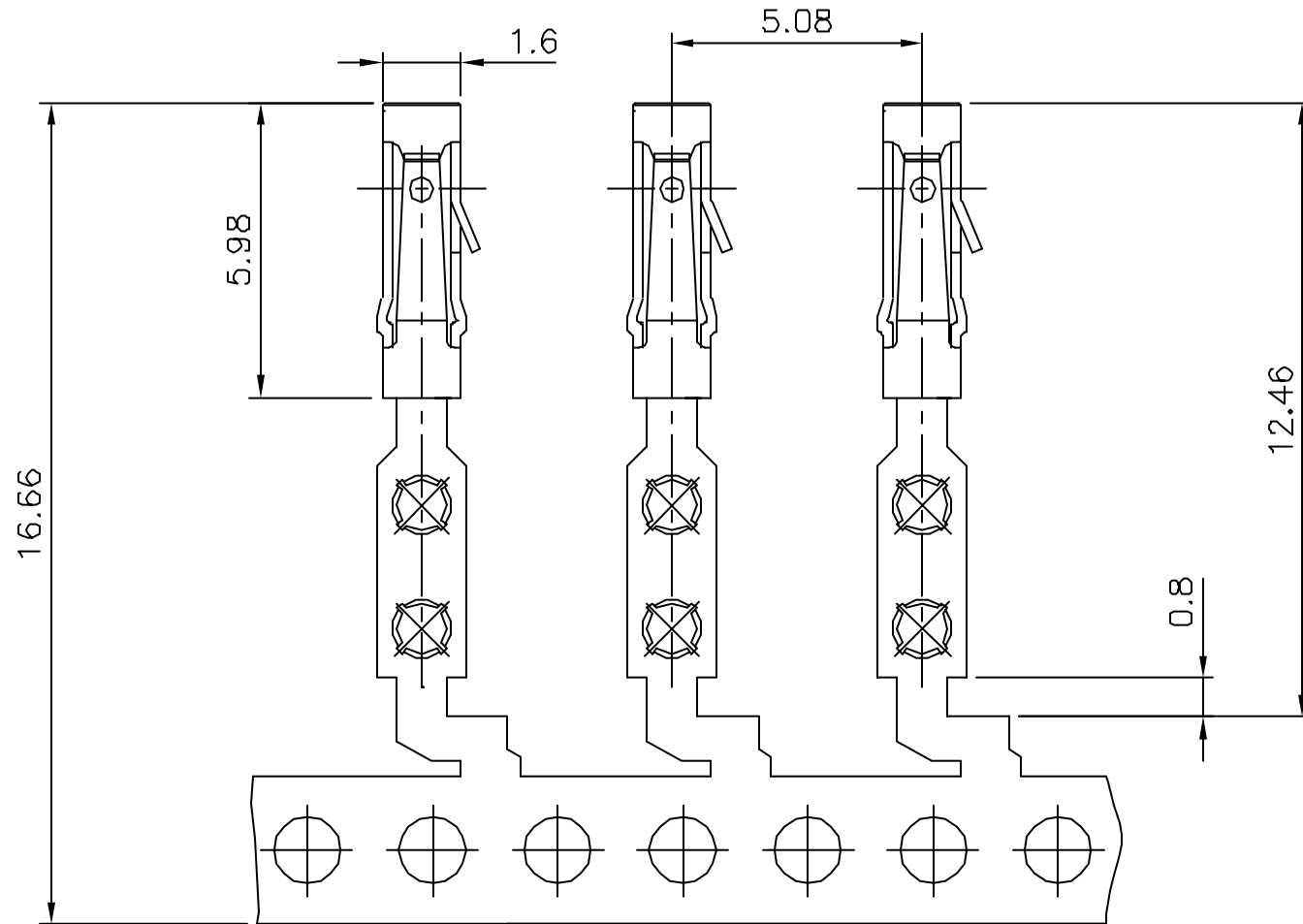


PRODUCT NUMBER	QUANTITY PER REEL	PACKAGING
77747-Y01(LF)	15000	CARDBOARD REEL
77747-Y11(LF)	3000	CARDBOARD REEL

WHEN NEEDED, SUFFIX LETTER "LF" INDICATES THE PRODUCT IS RoHS COMPATIBLE, SEE NOTE 3



REELING AFTER STAMPING

NOTES:

- 1 - MATERIAL: PHOSPHOR BRONZE, EXTRA HARD
 - 2 - FOR APPLICATION DATA, SEE TA 338
 - 3 - RoHS COMPATIBLE PRODUCT SPECIFICATIONS
 - a - PLATING:
 - "LF" MEANS THE PRODUCT IS LEAD-FREE, 2µm MINIMUM MATTE TIN OVER 1.27µm MINIMUM NICKEL UNDERPLATE.
 - b - LABELING:
 - MEETS PACKAGING SPECS AS PER GS-14-920
 - c - LEGAL STATEMENT: SEE GS-22-008
- THE PRODUCT IS NOT INTENDED TO BE EXPOSED TO A MANUFACTURING SOLDER PROCESS.

77747-3XXLF	0.76µm Au	Sn	0.3 N MIN 0.6 N MAX
77747-4XXLF	5µm Sn	Sn	0.3 N MIN 0.6 N MAX
77747-3XX	0.76µm Au	SnPb	0.3 N MIN 0.6 N MAX
77747-4XX	5µm SnPb	SnPb	0.3 N MIN 0.6 N MAX
PLATING CODE	CONTACT AREA	SOLDER TAIL	WITHDRAWAL FORCE USING SQUARE PIN 0.61
	PLATING THICKNESS OVER 1.27 Ni MIN		

mat'l code		surface	tolerance	projection	product family
SEE NOTES		ISO 1902	ISO 416 ISO 1101		DUFLEX
Ltr	ecn no	dr	date	tolerances unless otherwise specified	title
F	F05-0286	DLE	06.11.07	angles	DUFLEX
g	F06-0203	DLE	06.08.21	linear	TERMINAL
H	F07-0271	LMU	07.11.14	±2°	scale 10:1
		dr	D LEGRAND	04.12.16	dwg no
		enfr	P NIZZI	04.12.16	sheet 1 of 1
		chr	P NIZZI	04.12.16	size
		appd	P NZ	04.12.16	A3
sheet index	revision sheet			FCJ	type CUSTOMER Drawing



Copyright FCJ