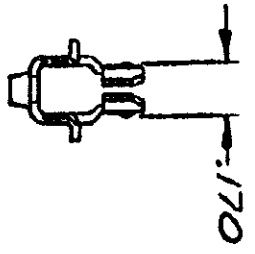
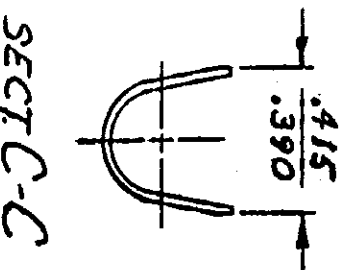
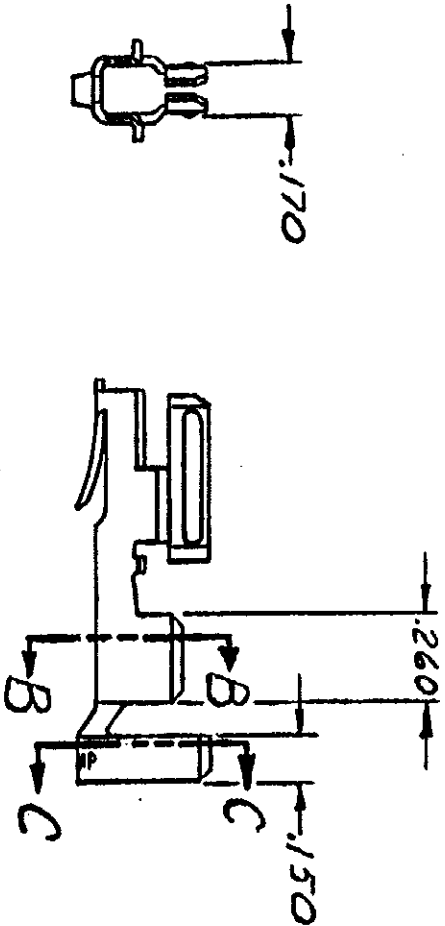
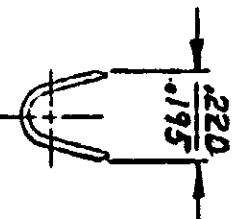
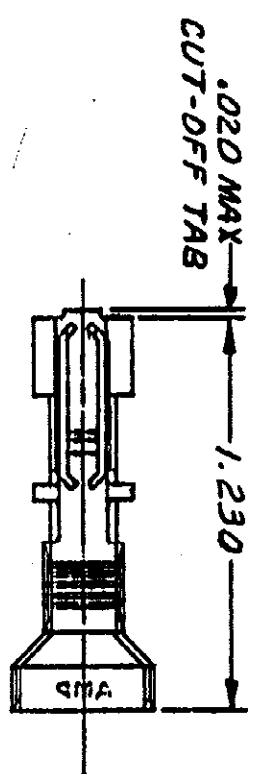


DRAWING MADE IN THIRD ANGLE PROJECTION

© COPYRIGHT 1977 BY AMP INCORPORATED, HARRISBURG, PA.  
 ALL INTERNATIONAL RIGHTS RESERVED. AMP INCORPORATED PRODUCTS  
 COVERED BY U. S. AND FOREIGN PATENTS AND/OR PATENTS PENDING.

REVISIONS				1	Loc S	DIST
P	F	ZONE	LTR	DESCRIPTION	DATE	APPROVED
✓		0		REL. DWG: M-4121	2-11-77	M.F.
✓		A		REVISED PER M-4428	2-25-77	Q.Q./B.H.
✓		A1		RESTORATION	4-25-77	K.J.J.
✓		B		OBSOLETE - 2 & SHEET 2 CM-473	3-4-86	K.S./R.S.
✓		C		WAS LOC CM, REVISED	8-18-87	M.H.



UNLESS OTHERWISE SPECIFIED DIMENSIONS ARE IN INCHES. TOLERANCES ON: ANGLES ± .015		CONTRACT NO. 2-11-77		DR. <i>[Signature]</i> 3/14/77		NAME: TERMINAL, HIGH CURRENT, HERMAPHRODITIC, LOOSE PIECE	
MATERIAL: PHOS BRZ		CHK. <i>[Signature]</i> 3/15/77		APPD. <i>[Signature]</i>		INSULATION DIA MAX: .360	
FINISH: TIN		DSGN APPD		OTHER APPD		WIRE RANGE: 12-8	
						PART NO: 350821-1	
						AMP INCORPORATED, Harrisburg, Pa.	
				SIZE: B		CODE IDENT NO: 00779	
				DRAWING NO: 350821		SHEET 1 OF 1	

CUSTOMER DRAWING

AMP 1473-18 (7-73)