

MT-RJ Connectors (Continued) / CORELINK Splice

MT-RJ Termination Tool Kits

Description	Part Number
MT-RJ Plug Termination Kit Tool Kit for termination of the MT-RJ Plug in handy plastic case. Contents are as follows: Cleave Pen, Jacket/Buffer/Coating Stripper, KEVLAR Shears, Strip Template, Cable Clamps, Cure Fixtures, Crimp Tool, Die Sets, Epoxy Dispensers	1278745-1
MT-RJ Jack Termination Kit Tool Kit for termination of the MT-RJ Jacks in handy soft case. Contents are as follows: Cleave Tool, Buffer/Coating Strip Tool, Micro Stripper, Kevlar Shears, MT-RJ Jack Strip Length Template, Actuator Key, Alcohol Wipes	1278346-1
Universal Termination Kit Tool Kit for termination of LIGHTCRIMP, LIGHTCRIMP Plus, and MT-RJ Jacks	1278949-2
Combination LIGHTCRIMP PLUS ST, SC, LC, & MT-RJ Jack Termination Kit - includes crimp tool, ST/SC/LC die sets, stripper tools, kevlar shears, ST and SC cable holder and cleave tool	1278118-4



KEVLAR is a trademark of E. I. Dupont de Nemours and Company.

CORELINK Splice

Product Facts

- Permanent, easy-to-use fiber splice
- Reusable
- High performance for singlemode and multimode
- Designed to TIA/EIA 568-b.3
- Clamping mechanism prevents torsional failure
- Accommodates both 250 μ m and 900 μ m buffers

Tyco Electronics' CORELINK Splice is an easy-to-use, high-performance mechanical splice for 125 μ m singlemode and multimode fibers. It's unique clamping mechanism is activated with a simple key; no other tooling is required. The transparent material allows the crafts person to both see and feel the fiber position. The CORELINK Splice is re-mateable — either fiber can be removed and replaced in the splice at any time.

Applications

- Outside Plant
- Fiber-in-the-Loop
- Fiber-to-Jumper Splicing
- Premises Networks
- Testing
- Emergency Restoration

CORELINK Splices can be housed in a variety of splice trays for placement in closures, ONUs, and fiber enclosures.

Instruction Sheet 408-4019

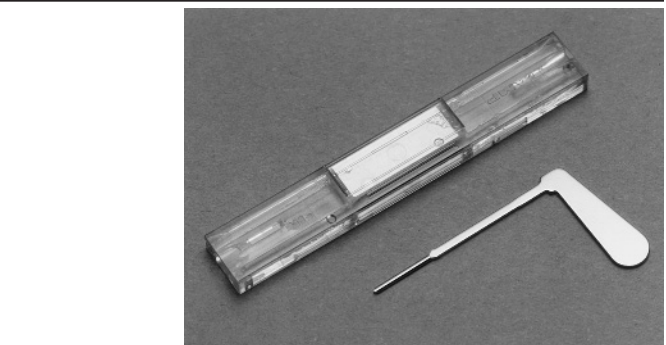
Performance Characteristics

Mean Splice Loss — < -0.3 dB
Mean Return Loss — -26 dB
Temperature Range — -0° to 60° C

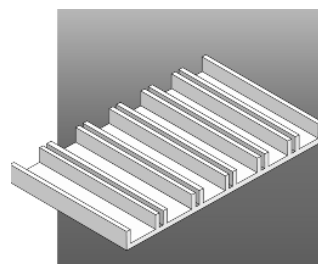


CORELINK Splice Workstation
Part Number 503605-1

Instruction Sheet 408-4131

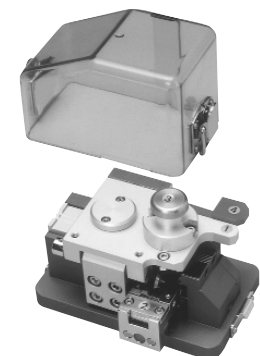


Description	Part Number
CORELINK splices — 12 pack — Includes 2 keys (singlemode)	503577-1
CORELINK splices — 12 pack — Includes 2 keys (multimode)	503901-1
2 Replacement keys in key holder	503681-1
Holder for up to 6 CORELINK splices — Mount on splice trays or in distribution boxes	559066-1
Splice Tray — Holds up to 12 CORELINK splices — for use in Tyco Electronics' closures and distribution boxes	559067-1



Splice Tray—holds 12 splices
Part Number 559067-1

1.5" x 2.4" elastomer holder for 6 CORELINK splices. Mount on splice trays or in distribution boxes.



Universal Fiber Optic Cleaving Tool
Part Number 503924-1