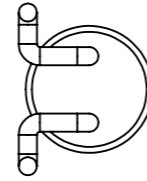
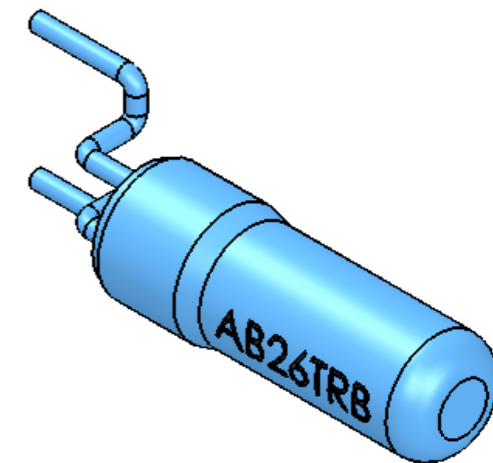
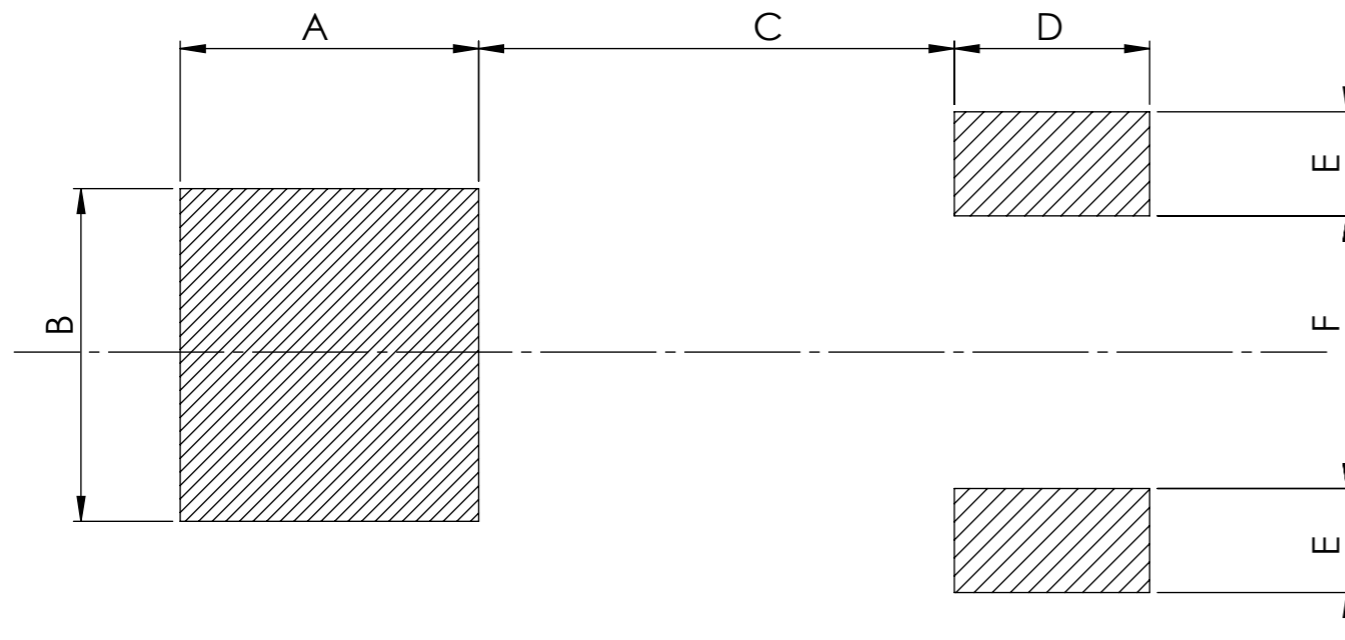



A	B	C	D	E	F
0.099 (2.5)	0.099 (2.5)	0.21 (5.25)	0.099 (2.5)	0.04 (1)	0.06 (1.5)



**Recommended Land Pattern**



**NOTE:**  
 The body/can of the component is not to be soldered. To do so may cause damage to the crystal.  
 Use Adhesive/Bonding Materials (i.e. Rubber Adhesive, Epoxy, etc) to affix the component body to the PCB.

UNLESS OTHERWISE SPECIFIED: DIMENSIONS ARE IN INCH(MM) SURFACE FINISH: TOLERANCES: LINEAR: ANGULAR:				FINISH:		DEBUR AND BREAK SHARP EDGES		DO NOT SCALE DRAWING		REVISION -	
DRAWN SAAZVAT				SIGNATURE		DATE		 30332 Esperanza, Rancho Santa margarita, California 92688			
CHK'D XXXXXX				APPV'D		MFG		TITLE: CRYSTAL			
Q.A				MATERIAL:		WEIGHT:		DWG NO. AB26TRB		A3	
								SCALE: 8:1		SHEET 1 OF 1	