

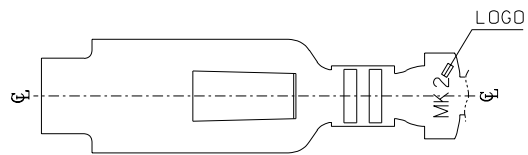
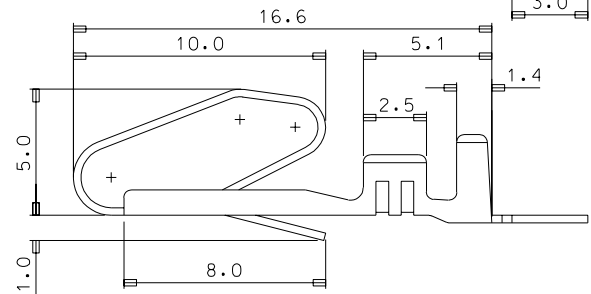
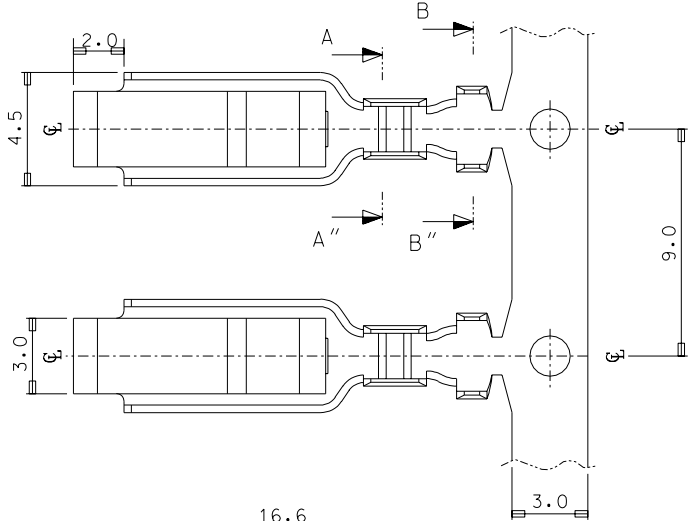
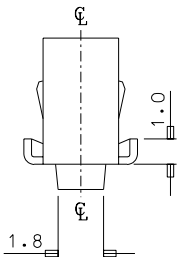
DO NOT SCALE DRAWING
DIMENSION IN METRIC

C

PROJECT NO.

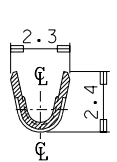
SIMILAR ITEM

DWG. NO. SD-35438-001

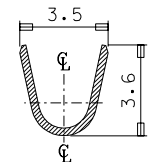


NOTES

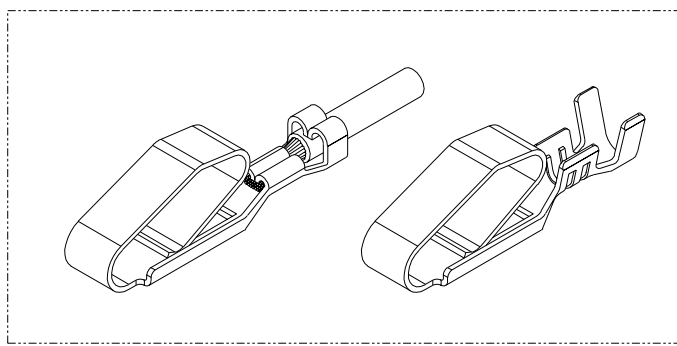
1. MATERIAL : PHOSPHOR BRONZE
THICKNESS : 0.3mm
2. FINISH : NONE
3. APPLICABLE WIRE : 0.5 - 0.85mm²
4. RECOMMENDED LENGTH OF WIRE STRIP IS 3.2-3.8mm.
5. GENERAL TOLERANCE : ±0.3



SEC' : A-A''



SEC' : B-B''



ISOMETRIC VIEW

NEW RELEASE EC NO. K0R1997-0154 DRWN: J.S.KANG 97/11/28 CHK: APPR:	DESCRIPTION MAJOR CRITICAL	QUALITY SYMBOLS MAJOR CRITICAL		GENERAL TOLERANCES: (UNLESS SPECIFIED)		SCALE 5:1	DESIGN UNITS <input checked="" type="checkbox"/> mm <input type="checkbox"/> INCH	THIRD ANGLE PROJECTION	DIMENSIONS: <input type="checkbox"/> mm <input type="checkbox"/> INCH <input type="checkbox"/> mm <input checked="" type="checkbox"/> mm ONLY		SHT	REV			
		4 PLACES ±0.	3 PLACES ±0.	2 PLACES ±0.15	1 PLACE ±0.25	mm INCH INCH mm	DRAWN BY & DATE J.S.KANG 97/11/28		TITLE: BULB SOCKET CONTACT TERMINAL						
		ANGULAR: ± 2°				DRAFT WHERE APPLICABLE MUST REMAIN WITHIN DIMENSIONS		CHECKED BY & DATE B.K.CHOI		APPROVED BY & DATE C.W.LEE				MOLEX INCORPORATED KOREA	
		A	REV	CAD FILENAME sd35438.dgn		MATERIAL NO. 35438-8000	DRAWING NO. SD-35438-001	SHEET NO. 1 OF 1		THIS DRAWING CONTAINS INFORMATION THAT IS PROPRIETARY TO MOLEX INCORPORATED AND SHOULD NOT BE USED WITHOUT WRITTEN PERMISSION.				SIZE B	