

REVISION AS

DO NOT SCALE FROM THIS PRINT

UNLESS OTHERWISE NOTED		TOLERANCES ARE:	TITLE:	DWG NO:
DIMENSIONS ARE IN INCHES		ANGLES	2mm THROUGH HOLE BOX CONNECTOR STRIP ASSEMBLY	MMS-1XX-01-XXX-XX-XXX
ONE PLC DECIMALS ± .1 [2.54]	THREE PLC DECIMALS ± .005 [.127]	± 2°		
TWO PLC DECIMALS ± .01 [2.54]	FOUR PLC DECIMALS ± .0020 [.0508]			SHEET 1 OF 2

MMS-1XX-01-XXX-XX-XXX

- NO. OF POSITIONS PER ROW
 - 02 THRU -40 FOR DOUBLE ROW
 - 02 THRU -40 FOR SINGLE ROW
 - LEAD STYLE (SEE TABLE 1)
 - 01 = THROUGH HOLE
 - PLATING
 - L = LIGHT SELECTIVE, MATTE TIN TAIL
 - S = SELECTIVE, MATTE TIN TAIL
 - ** -T = TIN
 - F = FLASH SELECTIVE, MATTE TIN TAIL
 - H = HEAVY GOLD (ENTRY STYLE: -SV, -DV AND -DH ONLY)
 - LM = LIGHT SELECTIVE; MATTE TIN TAIL
 - SM = SELECTIVE, MATTE TIN TAIL
 - ** -TM = TIN, MATTE TIN TAIL
 - FM = FLASH SELECTIVE, MATTE TIN TAIL
 - LTL = LIGHT SELECTIVE, TIN/LEAD TAIL
 - POLARIZING OPTION (USE PK-07-N)
 - SH = SINGLE ROW, HORIZONTAL ENTRY (USE MMS-XX-S -SEE NOTE 7)
 - DH = DOUBLE ROW, HORIZONTAL ENTRY (USE MMS-XX-D -SEE NOTE 7)
 - ENTRY/ROW SPECIFICATION
 - XD = DUAL ENTRY
 - XP = PASS THROUGH ENTRY
 - XV = VERTICAL (TOP) ENTRY
- = ENTRY OPTION AVAILABLE TO EXISTING CUSTOMERS ONLY
 ** = AVAILABLE TO EXISTING CUSTOMERS ONLY

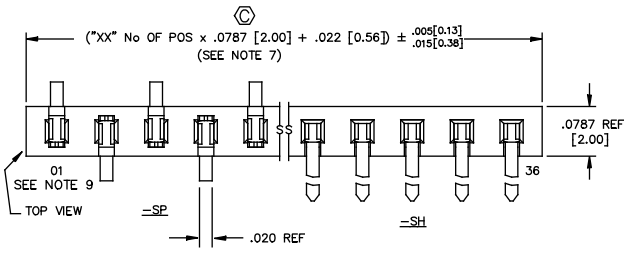


FIG 1

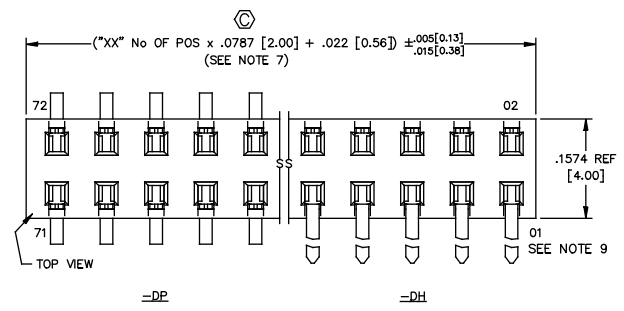
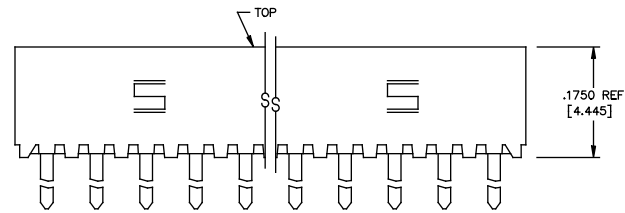


FIG 2



LEAD/ENTRY CONTACT 1

TABLE 1

	CONTACT 1	CONTACT 2	PACKAGING TUBE	PLUG	
<input type="checkbox"/>	01-SD	C-63-01-XXX	PT-1-24-02-23	TP-24	
<input type="checkbox"/>	01-DD	C-63-01-XXX	PT-1-24-01-25	TP-03	
<input type="checkbox"/>	01-SP	C-63-10-XXX	PT-1-24-03-16	TP-03	
<input type="checkbox"/>	01-DP	C-63-10-XXX	PT-1-24-01-27	TP-03	
	01-SH	C-63-05-XXX	PT-1-24-01-37	TP-24	
	01-DH	C-63-03-XXX	C-63-04-XXX	PT-1-24-03-09	TP-09
	01-L-SV	C-63-29-XXX	PT-1-24-01-23	TP-12	
	01-L-DV	C-63-29-XXX	PT-1-24-19-09	TP-24	
	01-S-SV	C-63-29-XXX	PT-1-24-01-23	TP-12	
	01-S-DV	C-63-29-XXX	PT-1-24-19-09	TP-24	
	01-T-SV	C-63-29-XXX	PT-1-24-01-23	TP-12	
	01-T-DV	C-63-29-XXX	PT-1-24-19-09	TP-24	
	01-F-SV	C-63-29-XXX	PT-1-24-01-23	TP-12	
	01-F-DV	C-63-29-XXX	PT-1-24-19-09	TP-24	
	01-H-SV	C-63-29-XXX	PT-1-24-01-23	TP-12	
	01-H-DV	C-63-29-XXX	PT-1-24-19-09	TP-24	

- NOTES:
- CONTACT RETENTION FORCE: SINGLE ROW .5 LB MIN. CONTACT RETENTION FORCE: DOUBLE ROW 1 LB MIN.
 - MAX ALLOWABLE BOW: .003 INCH/INCH.
 - MAX ALLOWABLE SWAY: 2° IN EITHER DIRECTION.
 - 1st POS. WILL ALWAYS POINT UP ON TOP VIEW AS SHOWN.
 - [] DIMS ARE IN METRIC AND ARE NOT CONTROLLING DIMS.
 - (⊙) REPRESENTS A CRITICAL DIMENSION.
 - CUT BODIES FROM MMS-40-D AND MMS-40-S.
 - POSITIONS -02 THRU -04 ARE TO BE BULK PACKAGED.
 - # 1 PIN LOCATION IS THE SAME FOR ALL LEAD STYLES WITHIN A ROW OPTION. SH, -SP, -SD, -SV SEE FIG 1. DH, -DP, -DD, -DV, SEE FIG 2
 - MAXIMUM PIN HEIGHT VARIATION BETWEEN TWO PINS IN THE SAME ROW IS +/- .005.
 - MAXIMUM BURR INSIDE CONTACT BARREL: .003 [.08]
 - MAXIMUM CUT FLASH: .020 [0.51]

PROPRIETARY NOTE
 THIS DOCUMENT CONTAINS CONFIDENTIAL AND PROPRIETARY INFORMATION AND ALL DESIGN, MANUFACTURING, REPRODUCTION, USE, PATENT RIGHTS AND SALES RIGHTS ARE EXPRESSLY RESERVED BY SAMTEC, INC. THIS DOCUMENT SHALL NOT BE DISCLOSED, IN WHOLE OR IN PART, TO ANY UNAUTHORIZED PERSON OR ENTITY NOR REPRODUCED, TRANSMITTED OR INCORPORATED IN ANY OTHER PROJECT IN ANY MANNER WITHOUT THE EXPRESS WRITTEN CONSENT OF SAMTEC, INC.

PLOT SCALE: 1=15 / DIMSCALE: .1

EXISPROD\ASSEMBLY\2MM MMS01ASM

samtec

520 PARK EAST BLVD. NEW ALBANY, INDIANA 47150
 PHONE (812) 944-6733 P.O. BOX 1147
 CODE 55322

MADE BY: PURVIS 2-12-93

MMS-1XX-01-XXX-XX-XXX
 SHEET 1 OF 2