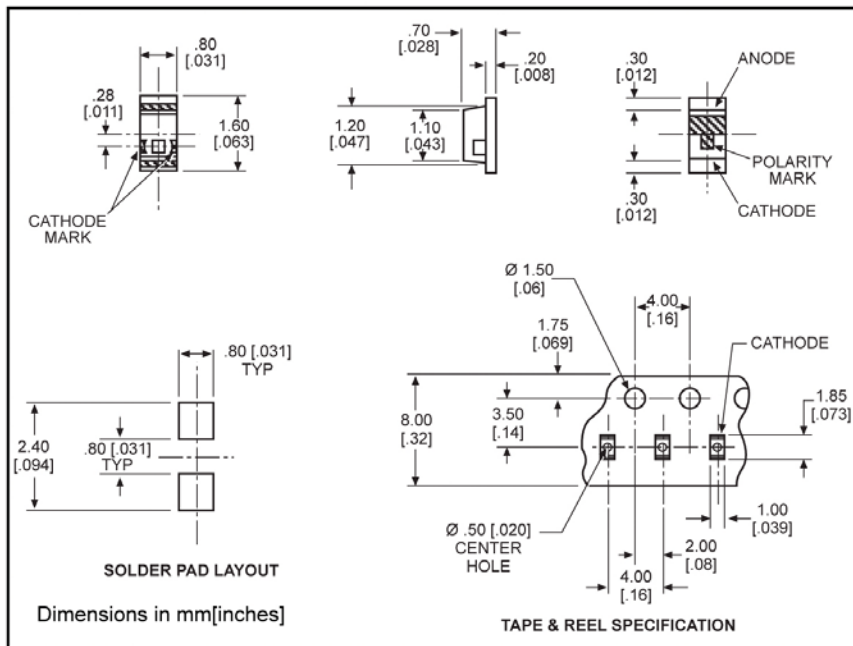


**Surface Mount LED
0603 Type Package**

597-5004-4xx
597-5x12-4xx
597-52x3-4xx



PART NO.*

597-5004-4xx
597-5112-4xx
597-5203-4xx
597-5213-4xx
597-5223-4xx
597-5312-4xx
597-5412-4xx

COLOR

AllnGaP Red
Red
Orange
AllnGaP Orange
AllnGaP Yellow
Green
Yellow Green

Benefits

- Compatible with automatic placement equipment
- Compatible with infrared reflow processes
- Packaged on 12mm tape, 7" reels (meets EIA-481-1 standard)
- Helps to eliminate mixed technology PC board processing

***ORDERING INFORMATION**

597-5xxx-4xx

packaging option

02	20 pieces on tape
07	7" reel, 4000 pcs/reel

	AllnGaP Red -5004	Red -5112	Orange -5203	AllnGaP Orange -5213	AllnGaP Yellow -5223	Green -5312	Yellow Green -5412
ABSOLUTE MAXIMUM RATINGS (T _A =25°C)							
Power Dissipation (mW)	81	57.5	70	81	81	70	70
Forward Current (mA)	30	25	25	30	30	25	25
Peak Current (mA)	100	60	60	100	100	60	60
<i>Pulse width = 10 μs</i>							
Operating Temperature (°C)	-40/+85	-30/+85	-30/+85	-40/+85	-40/+85	-30/+85	-30/+85
Storage Temperature (°C)	-40/+100	-40/+100	-40/+100	-40/+100	-40/+100	-40/+100	-40/+100
Soldering Temperature	240°C, 5 sec. max						

Solder Adherence per MIL-STD-202E, Method 208C

		AllnGaP Red -5004	Red -5112	Orange -5203	AllnGaP Orange -5213	AllnGaP Yellow -5223	Green -5312	Yellow Green -5412
OPERATING CHARACTERISTICS (T _A =25°C)								
Luminous Intensity (mcd)	Min.	16	7	2	16	16	3.8	7
	Typical	50	11.7	3.4	65	65	6.4	11.7
		I _F =20mA						
Peak Wavelength (nm)	Typical	630	660	605	609	592	560	570
		λ Peak						
Viewing Angle (2Θ 1/2)	Typical	152°	152°	152°	152°	152°	152°	152°
Forward Voltage (V)	Typical	1.9	1.7	2.2	1.9	1.9	2.1	2.1
	Max.	2.4	2.3	2.8	2.4	2.4	2.8	2.8
		I _F =20mA						
Reverse Current (μA)	Max	100	100*	100*	100	100	100*	100*
		(V _R = 5V) * (V _R = 4V)						

Θ 1/2 is the off axis angle at which the luminous intensity is half the axial luminous intensity